



Tempest Avenue, Potters Bar, Hertfordshire, EN6 5JX

£550,000

- **SPACIOUS 3 BEDROOM SEMI-DETACHED HOME**
- **OFF STREET PARKING X 3**
- **DOWNSTAIRS TOILET**
- **LARGE FAMILY BATHROOM**
- **GARAGE TO REAR VIA SHARED DRIVEWAY**
- **SOUGHT AFTER LOCATION**
- **THROUGH LOUNGE /DINING ROOM**
- **THREE SPACIOUS BEDROOMS**
- **LARGE REAR GARDEN**

108, High Street, Potters Bar, EN6 5AT

01707 245 555

www.home-counties.com

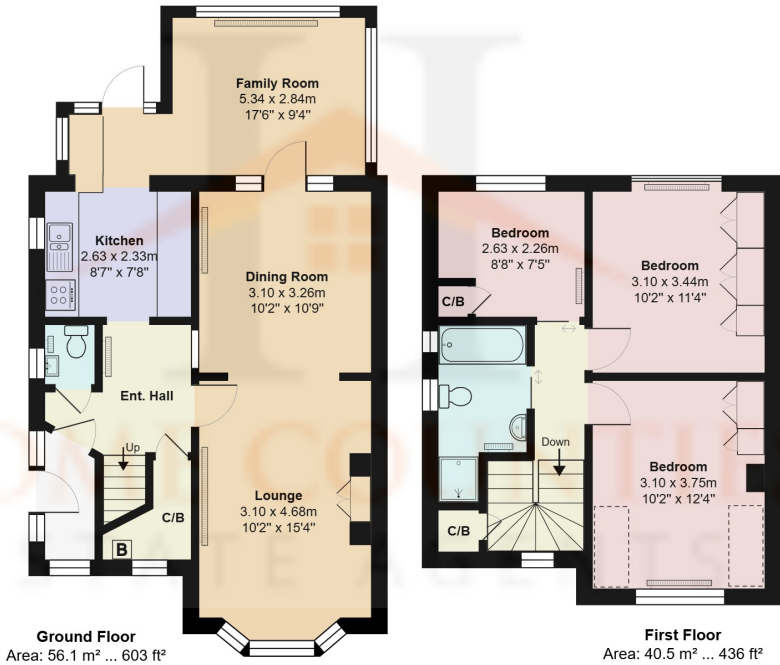
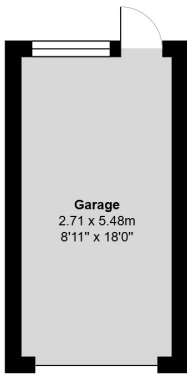
Tempest Avenue, Potters Bar, Hertfordshire, . EN6 5JX

£550,000 Freehold

Spacious Three-Bedroom Family Home in Sought-After Potters Bar Location Nestled on a quiet, tree-lined road in Potters Bar, this larger-than-average three-bedroom semi-detached home offers the perfect blend of space, comfort, and convenience.

Set back from the road, the property boasts ample off-street parking, a paved driveway, and side access to the rear garden. Stepping inside, a welcoming hallway leads to a bright front-facing lounge and a spacious dining room at the rear, seamlessly flowing into an extended living area and well-appointed kitchen. A guest toilet completes the ground floor. Upstairs, the home features two generous double bedrooms, a comfortable single bedroom, and a larger-than-average family bathroom with both a bathtub and a separate shower cubicle.

Outdoor Space The impressive 120ft mature rear garden provides an idyllic setting for relaxation, play, or entertaining.



Tempest Avenue, Hertfordshire EN6

Total Area: 111.2 m² ... 1197 ft²

All measurements are approximate and for display purposes only

Energy Efficiency Rating		
	Current	Potential
Very energy efficient - lower running costs		
(92+) A		
(81-91) B		86
(69-80) C	70	
(55-68) D		
(39-54) E		
(21-38) F		
(1-20) G		
Not energy efficient - higher running costs		
England, Scotland & Wales		
EU Directive 2002/91/EC		

