

FOR SALE

£220,000

South View, Bromborough Pool, Wirral. CH62 4UA



Perfect first home! Sat on South View in Bromborough Pool is this well-presented, two double bedroom, semi-detached home. Ready for a buyer to put their own stamp on this property, you benefit from open plan living along with a private rear garden and beautifully appointment bathroom. With local amenities nearby, as well as great transport links and schools, this is not one to be missed!

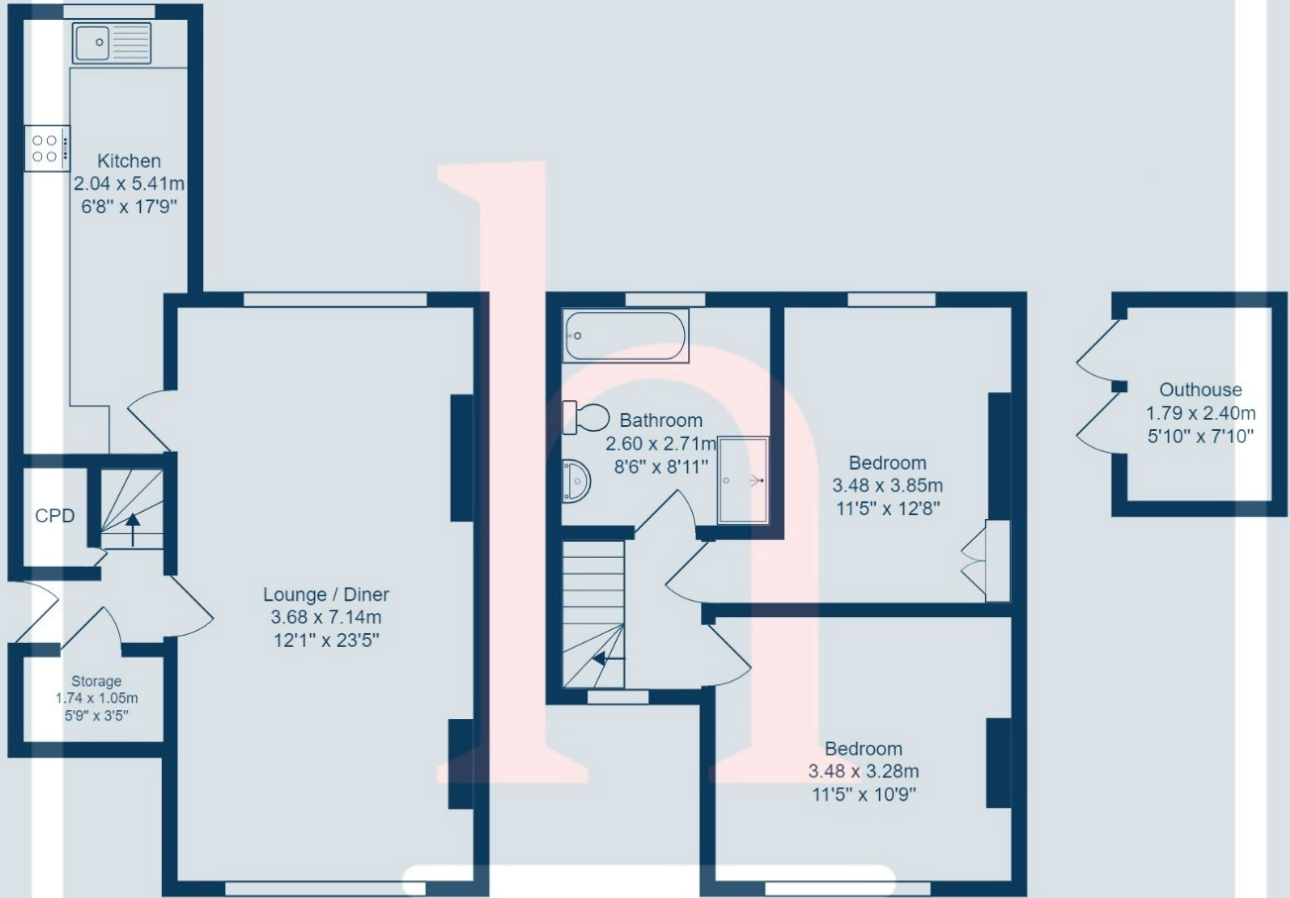




Ground Floor

1st Floor

Outbuilding



Total Area: 83.7 m² ... 901 ft²

All measurements are approximate and for display purposes only.