



OXLEY COURT, ALEXANDRA AVENUE, HARROW

£1,900 pcm

**** AVAILABLE IMMEDIATELY **** A spacious and newly decorated three bedroom top floor flat, conveniently located for shops, schools and transport links. The property briefly comprises of a welcoming entrance hallway, bay fronted living room, modern fitted kitchen with integrated appliance, three good size bedrooms and modern bathroom suite. Further benefits include double glazing, gas central heating, communal garden and rear access via stairs to communal rear garden and flat.

- AVAILABLE IMMEDIATELY
- THREE BEDROOM TOP FLOOR FLAT
- NEWLY DECORATED THROUGHOUT
- SPACIOUS BAY FRONTED LIVING ROOM
- MODERN FITTED KITCHEN AND BATHROOM
- COMMUNAL GARDEN
- DOUBLE GLAZING & GAS CENTRAL HEATING
- REAR ACCESS TO FLAT AND COMMUNAL GARDEN VIA STAIRS
- CONVENIENTLY LOCATED FOR SHOPS, SCHOOLS AND TRANSPORT LINKS

Ground Floor

Communal Entrance

Second Floor (TOP)

Hallway

Rear access to communal rear garden via steps.

Living Room

17' 2" into bay x 12' 9" (5.23m x 3.89m)

Kitchen

10' 9" max x 10' 8" (3.28m x 3.25m)

Bedroom One

12' 7" x 8' 7" (3.84m x 2.62m)

Bedroom Two

12' 2" x 9' 3" max (3.71m x 2.82m)

Bedroom Three

10' 1" x 8' 2" (3.07m x 2.49m)

Bathroom

7' 5" x 7' 2" (2.26m x 2.18m)

Outside

Front Garden

Permit residents parking.

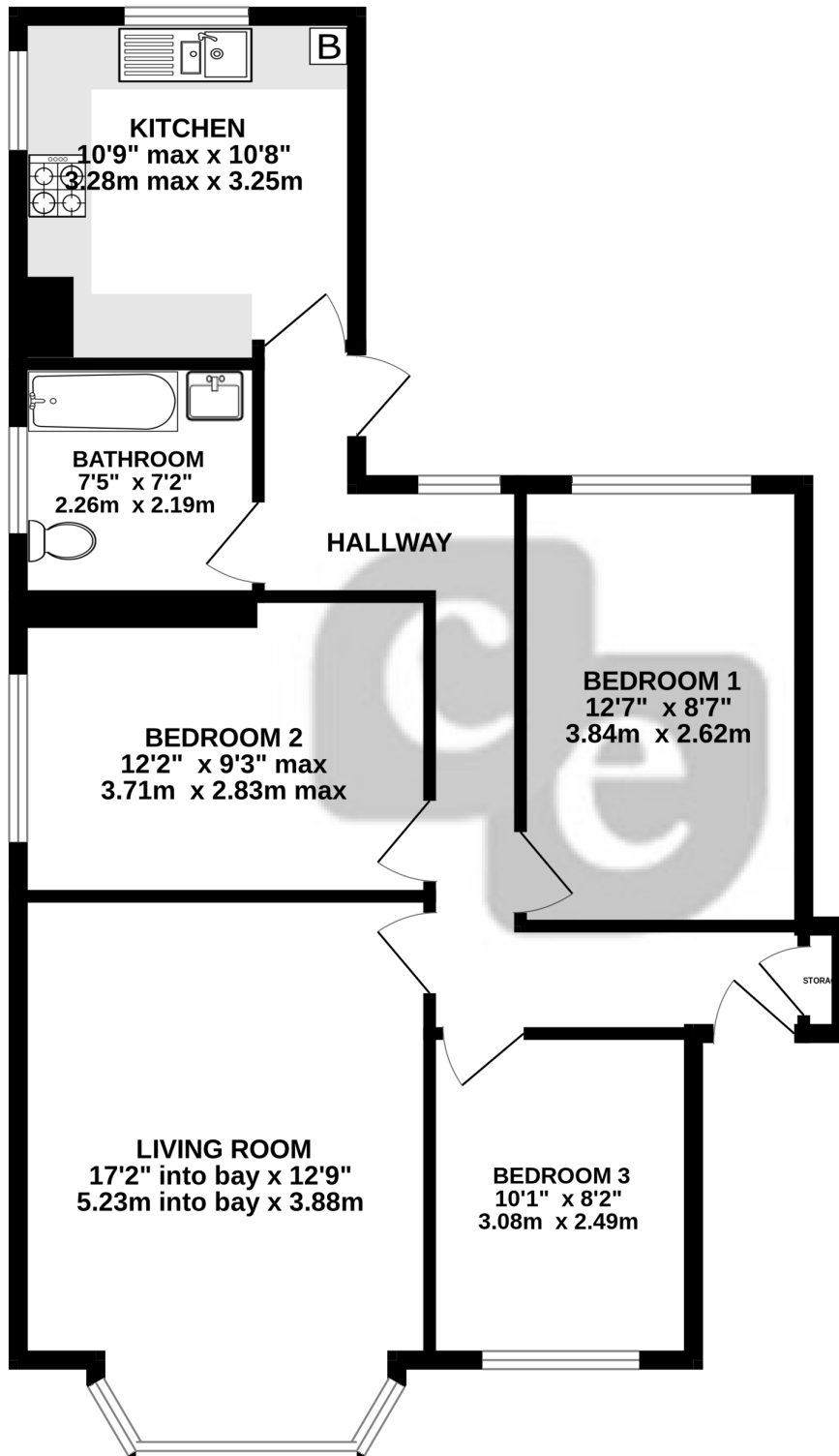
Communal Rear Garden

Communal garden with rear vehicle access and bin store area.



DISCLAIMER: These particulars, whilst believed to be accurate are set out as a general outline only for guidance and do not constitute any part of an offer or contract. Intending purchasers should not rely on them as statements or representation of fact, but must satisfy themselves by inspection or otherwise as to their accuracy. We have not carried out a detailed survey nor tested the services, appliances and specific fittings. Room sizes should not be relied upon for carpets and furnishings. The measurements given are approximate. No person in this firms employment has the authority to make or give any representation or warranty in respect of the property.

SECOND FLOOR (TOP)



Whilst every attempt has been made to ensure the accuracy of the floorplan contained here, measurements of doors, windows, rooms and any other items are approximate and no responsibility is taken for any error, omission or mis-statement. This plan is for illustrative purposes only and should be used as such by any prospective purchaser. The services, systems and appliances shown have not been tested and no guarantee as to their operability or efficiency can be given.
Made with Metropix ©2025