



GREGORY BROWN
RESIDENTIAL SALES & LETTINGS

OIEO £475,000 Freehold
FOR SALE



Hythe Road, Staines-upon-Thames, Surrey, TW18 3ED

VERY WELL PRESENTED & SPACIOUS CHARACTER PROPERTY SITUATED ALONG THIS MUCH SOUGHT AFTER ROAD IDEALLY LOCATED WITHIN MOMENTS OF STAINES TOWN CENTRE & WITH EASY ACCESS TO LOCAL MOTORWAY NETWORKS & THE RIVER THAMES. The property is in good order throughout and benefits from a spacious lounge, separate dining room, modern fitted kitchen, three well proportioned bedrooms, upstairs W.C, luxury shower room, secluded rear garden and off street parking to rear. Viewings Highly Recommended!

Gregory Brown

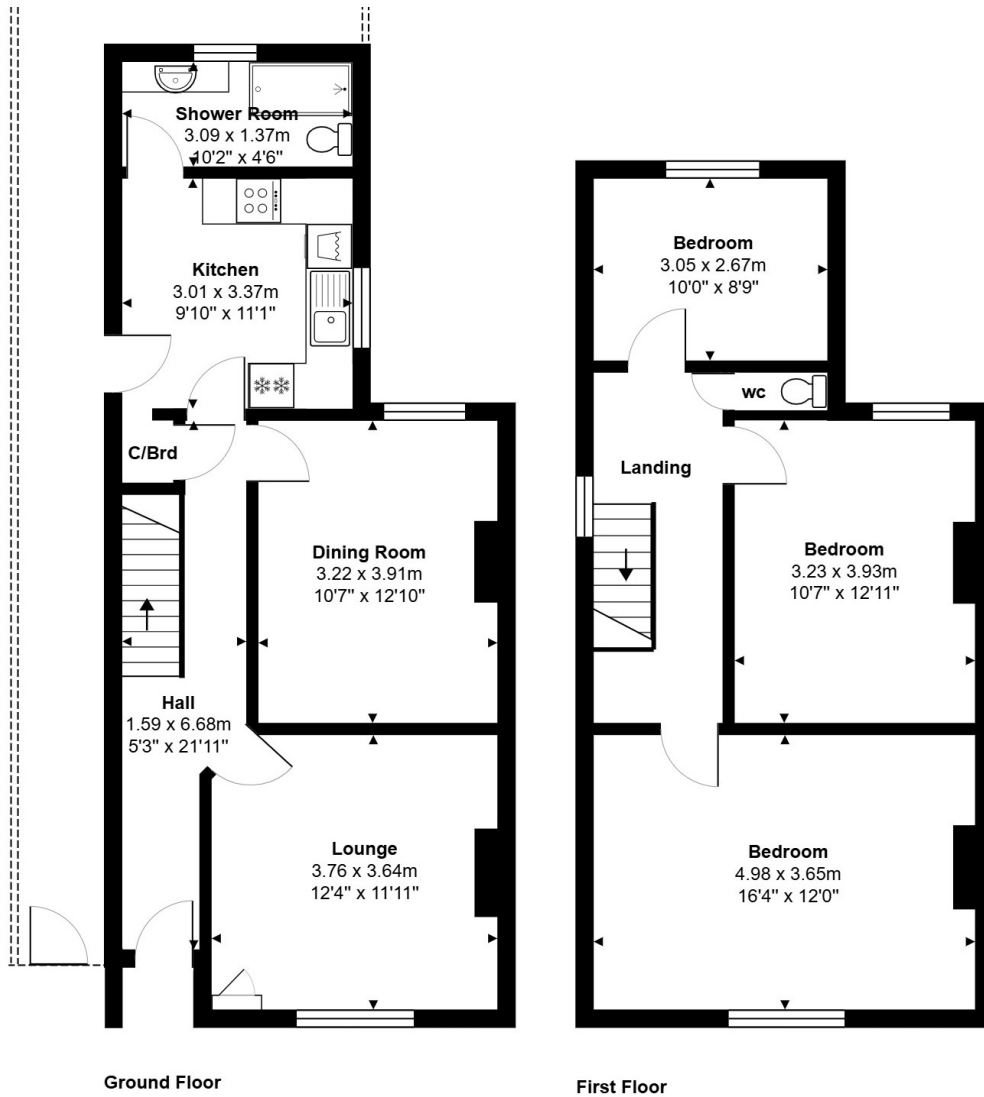
127a, High Street, Staines-upon-Thames, TW18 4PD

01784 451458

staines@gregory-brown.co.uk

ROOM DESCRIPTIONS

FLOORPLAN



Total Area: 99.1 m² ... 1066 ft²

All measurements are approximate and for display purposes only.

127a, High Street, Staines-upon-Thames, TW18 4PD

01784 451458

staines@gregory-brown.co.uk