

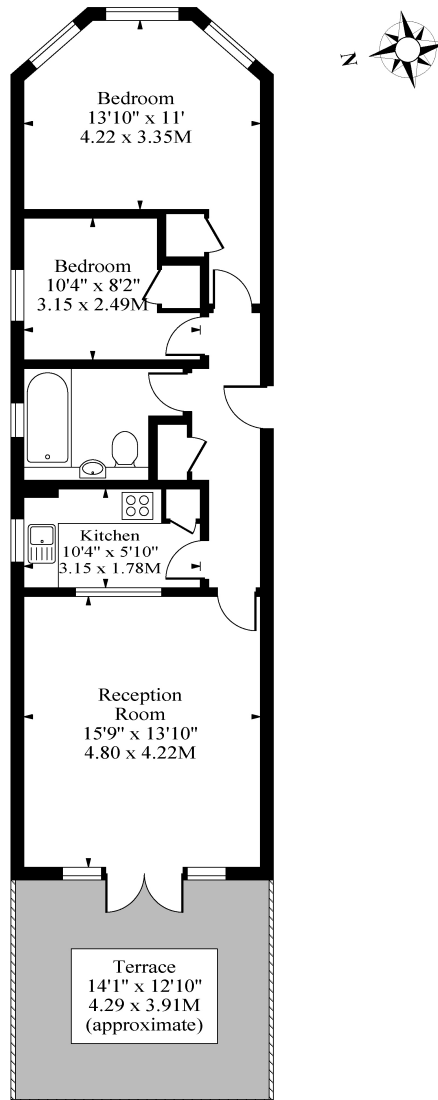


West End Lane, London, NW6

£2,400 pcm

- Private Roof Terrace
- Second Floor
- Furnished
- Two Double Bedroom Apartment
- Bright & Spacious Throughout
- Available 5th October 2023

West End Lane, NW6



First Floor

Approx Gross Internal Area 663 Sq Ft - 61.59 Sq M

Measured in accordance with RICS guidelines. Every attempt is made to ensure accuracy
However all measurements are approximate.
The floor plan is illustrative purposes only and is not to scale

www.tomekphotography.co.uk

