



MAXWELLS



**14 Lord Fielding Close, Banbury, Oxfordshire. OX16 1GB**  
**Guide Price £295,000 - Freehold**



## PROPERTY DESCRIPTION

Offered for sale with no onward chain is this three bedroom house with sitting room, large kitchen/dining room, garage and allocated parking.

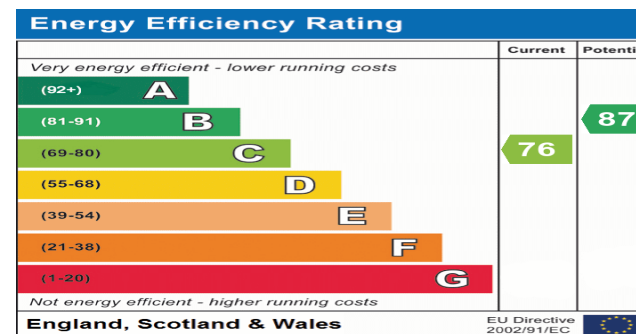
Located on the popular Hanwell Fields at the end of a cul de sac is this terrace family home. The house is set back from the road with a small garden laid mainly to lawn and a pathway leading to the front door. On the ground floor is an entrance hallway with cloakroom, sitting room and a large kitchen/dining room.

To the first floor are three bedrooms with an en suite to the master and family bathroom. The rear garden is enclosed by timber fencing with a timber gate providing pedestrian access to the allocated parking and garage.

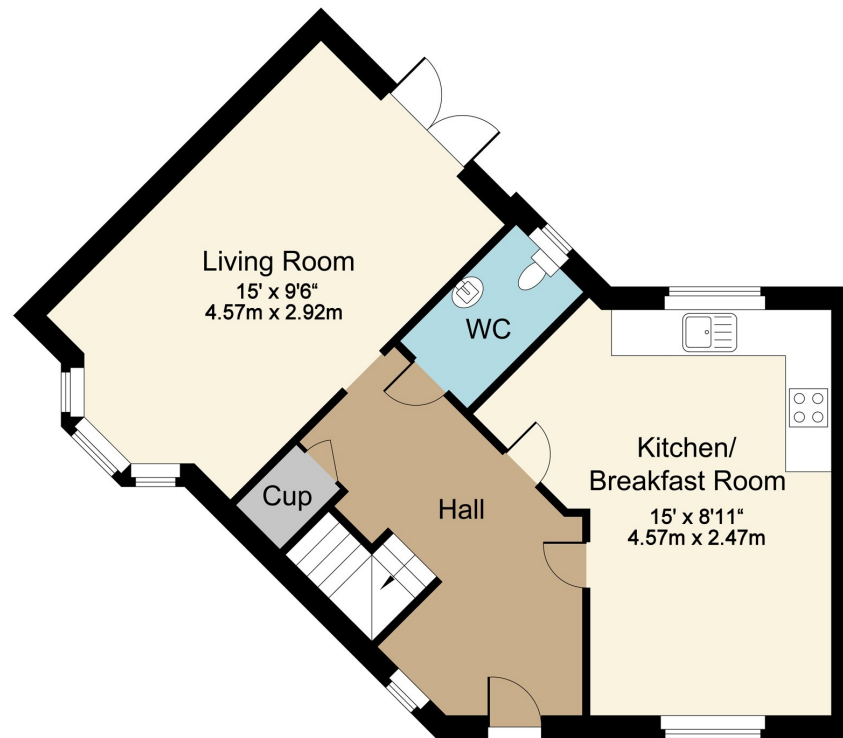
Services. We understand the property is connected to all mains services including electricity, gas, drainage and water. The heating is provided by a gas fired boiler.

## POINTS OF INTEREST

- No Onward Chain
- Sitting Room
- Kitchen/Dining Room
- Cloakroom
- Three Bedrooms
- En Suite Shower Room
- Family Bathroom
- Enclosed Rear Garden
- Garage & Allocated Parking



14 Lord Fielding Close, Banbury



Ground Floor



First Floor

FOR ILLUSTRATIVE PURPOSES ONLY-NOT TO SCALE  
 The position & size of doors, windows, appliances and other features are approximate only.