



Day & Co  
ESTATE AGENTS

28 Cavendish Street  
Keighley  
BD21 3RG



6 Waterwheel Lane, Oakworth,  
Keighley, West Yorkshire, BD22  
7NX

£289,995

T: 01535 664609

W: [www.dayandcoestateagents.co.uk](http://www.dayandcoestateagents.co.uk)

E: [keighley@dayandcoestateagents.co.uk](mailto:keighley@dayandcoestateagents.co.uk)



- SPACIOUS TOWN HOUSE
- ACCOMMODATION OVER 4 FLOORS
- REAR PATIO GARDEN

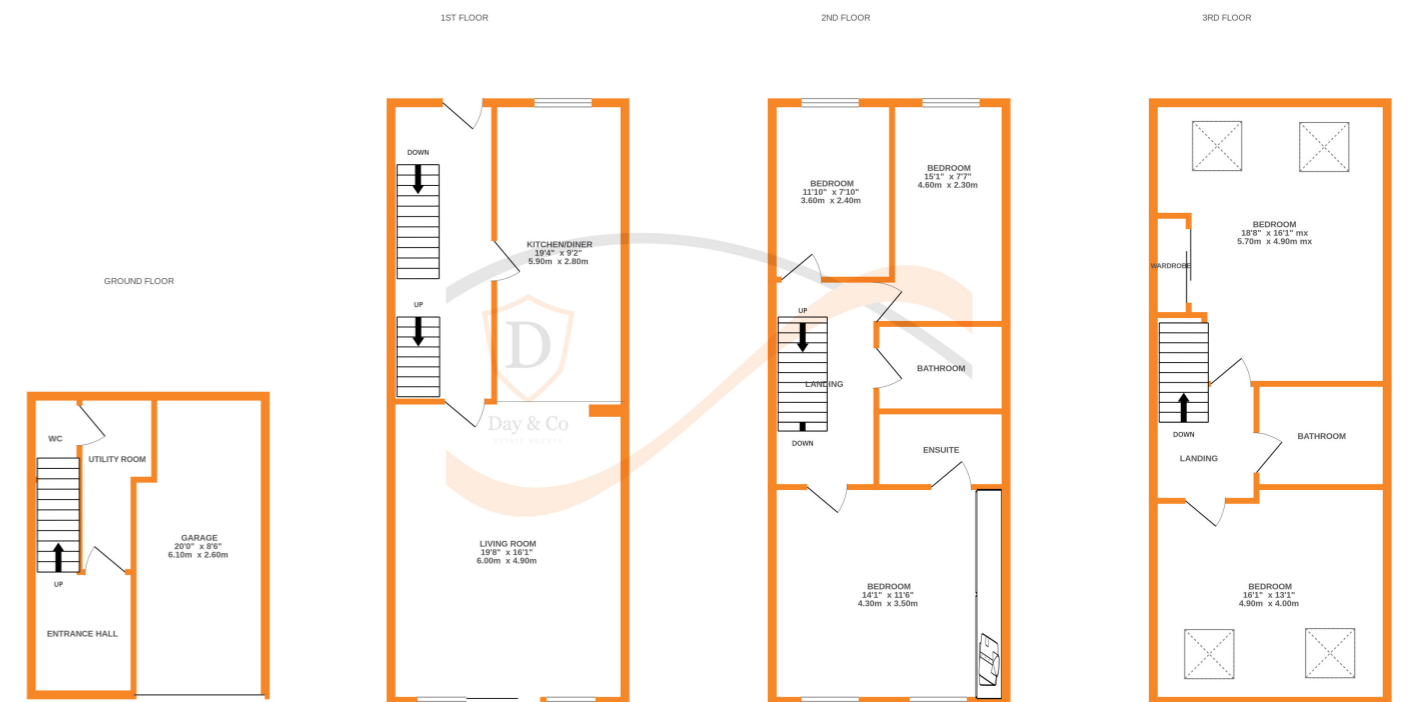
- 5 BEDROOMS, 3 BATHROOMS
- PARKING, INTEGRAL GARAGE
- EPC RATING C

## SUMMARY

\*\* SPACIOUS FIVE BEDROOM TOWN HOUSE, THREE BATHROOMS, WELL PRESENTED FAMILY ACCOMMODATION OVER FOUR FLOORS, PARKING & INTEGRAL GARAGE, REAR PATIO GARDEN & ROCKERY, INTERNAL VIEWING ADVISED, EPC RATING C \*\*

## FULL DESCRIPTION

Viewing is essential to fully appreciate the flexible family living accommodation on offer in this deceptively spacious five bedroom mid town house, situated in the ever popular village location of Oakworth with excellent access to local schools. The four storey accommodation comprises of an entrance hall giving access to the utility room which has plumbing for an automatic washing machine and a separate cloaks WC. To the first floor there is a spacious living room with windows and "Juliet" Balcony with sliding doors to the front elevation, open plan to the kitchen diner with a modern range of fitted base and wall mounted units, integrated appliances to include double oven, hob, extractor hood, dishwasher, complimenting counter worktops. To the second floor there are three bedrooms, the principle bedroom having an en-suite shower room. There is a separate bathroom on this level having a bath with shower over, WC, wash hand basin. To the upper floor there are two further double bedrooms, and a separate bathroom with four piece suite comprising of a bath, shower cubicle, WC, wash hand basin. Gas Central Heating & Double Glazing. Externally there is a parking then a car port leading to an integral garage with shutter door. To the rear there is a pleasant patio garden with raised rockery. EPC Rating C.



Whilst every attempt has been made to ensure the accuracy of the floorplan contained here, measurements of doors, windows, rooms and any other items are approximate and no responsibility is taken for any error, omission or mis-statement. This plan is for illustrative purposes only and should be used as such by any prospective purchaser. The services, systems and appliances shown have not been tested and no guarantee as to their operability or efficiency can be given.  
Made with Metropix ©2024