

South Street

Castle Cary, BA7 7ES

COOPER
AND
TANNER



£350,000 Freehold

🛏️ 2 🛋️ 2 🚿 1 EPC D

Description

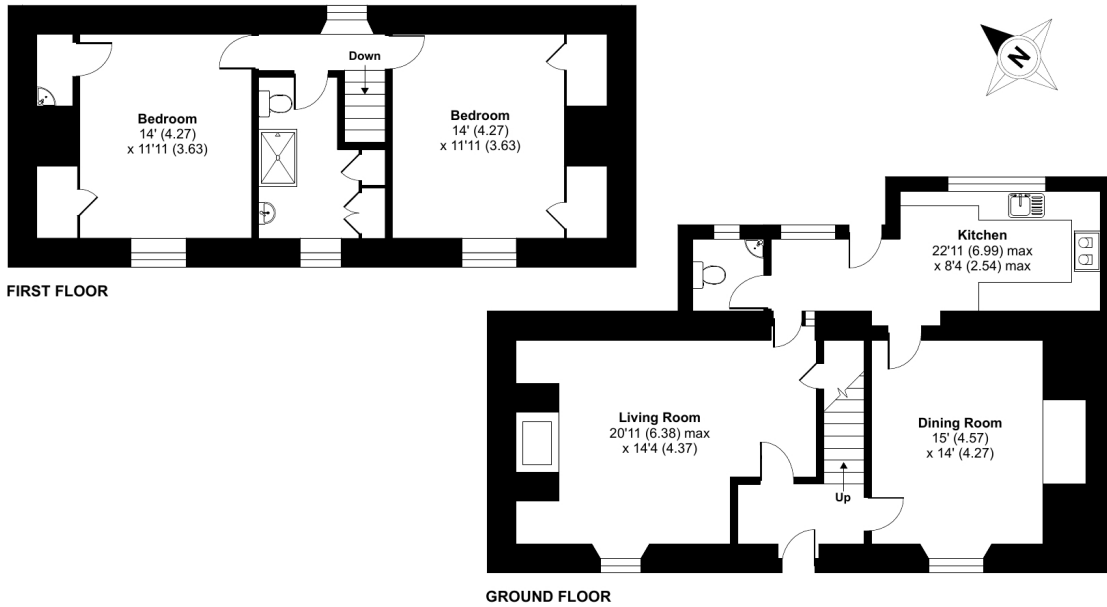
Located on the desirable South Street in Castle Cary is this delightful two bedroom end-of-terrace period cottage. Boasting a prime location within walking distance of the town centre, this characterful home offers the perfect blend of 18th Century living with modern amenities and easy accessibility to the towns shops, pubs and community.

Step inside to discover a warm and inviting living space, where original character features blend seamlessly within the more modern comforts. The spacious layout provides ample room to relax and entertain guests, coupled with natural light coming in from the windows to illuminate the charming exposed beams of the living room ceiling and other period

South Street, BA7

Approximate Area = 1303 sq ft / 121 sq m

For identification only - Not to scale



Floor plan produced in accordance with RICS Property Measurement Standards incorporating International Property Measurement Standards (IPMS2 Residential). © ritchecom 2024. Produced for Cooper and Tanner. REF: 1109559



Features

- No Onward Chain
- Spacious Accommodation
- Allocated Parking Possible
- Gas Based Central Heating
- Character Features Throughout
- Two Bedroom & Two Reception Rooms
- Walking Distance From The Town Centre
- Southwest Facing Garden
- 18th Century Cottage
- Two Inglebrook Fireplaces & Flagstone Flooring

Local Information

- Council Tax Band D
- Tenure Freehold
- EPC Rating D

CASTLE CARY OFFICE

Telephone 01963 350327

Fore Street, Castle Cary, Somerset BA7 7BG

castlecary@cooperandtanner.co.uk

**COOPER
AND
TANNER**

Important Notice: These particulars are set out as a general outline only for the guidance of intended purchasers and do not constitute, nor constitute part of, an offer or contract. All descriptions, dimensions, reference to condition and necessary permissions for use and occupation, warranties and other details are given without responsibility and any intending purchasers should not rely on the m as statements or rep representations of fact but must satisfy themselves by inspection or otherwise as to the correctness of each of them.

