



Maldon Close, London, E15 1PR

**Cow & Co**  
LONDON



GUIDE PRICE OF £275,000-375,000. Set on the ground floor of a secure building this apartment consists of two good sized bedrooms, a spacious open-plan reception dining room that leads on to a kitchen. There is a good sized 3 piece suite family bathroom and double glazing throughout. The property also benefits from allocated parking.

The amenities of Leytonstone High Road are on the doorstep with Stratford and Westfield shopping centre just moments away. Local transport links include Maryland Station and Stratford Station and Stratford International.

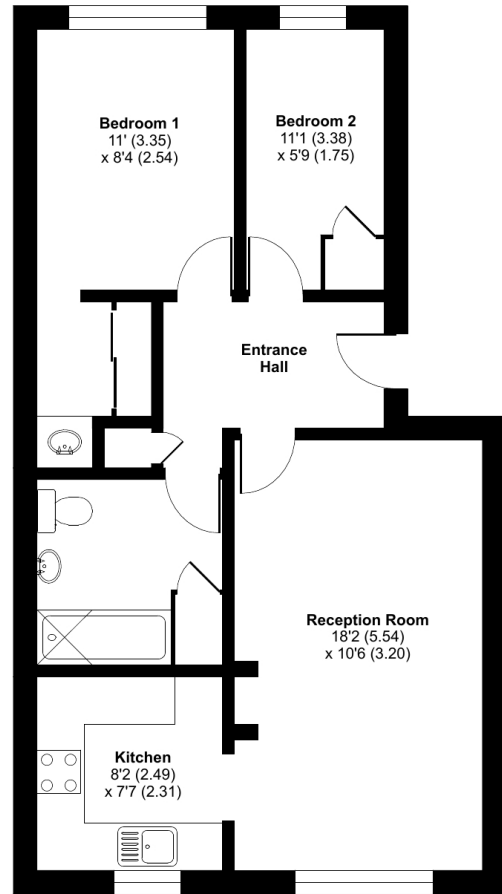


- Two bedroom apartment
- No ongoing chain
- Fantastic transport links
- Communal garden
- Living area open plan to kitchen
- Allocated parking space
- Walking distance to Maryland Station
- Double glazed windows

# Maldon Close, London, E15

Approximate Area = 593 sq ft / 55 sq m

For identification only - Not to scale



**GROUND FLOOR**



Floor plan produced in accordance with RICS Property Measurement Standards incorporating International Property Measurement Standards (IPMS2 Residential). © nchecon 2022. Produced for Cow & Co Properties Ltd. REF: 817719

Tel: 0208 065 0010  
Email: [thehub@cowandco-london.com](mailto:thehub@cowandco-london.com)  
Web: [cowandco-london.com](http://cowandco-london.com)

Agents note: All measurements are approximate and whilst every attempt has been made to ensure accuracy they are for general guidance only and must not be relied on. The fixture and fittings referred to have not been tested and therefore no guarantee can be given that they are in working order. Internal photographs are reproduced for general information and it must not be inferred that any item shown is included with the property.

# Cow & Co

LONDON