



82 The Gorseway, Bexhill-on-Sea, East Sussex,
TN39 4NA

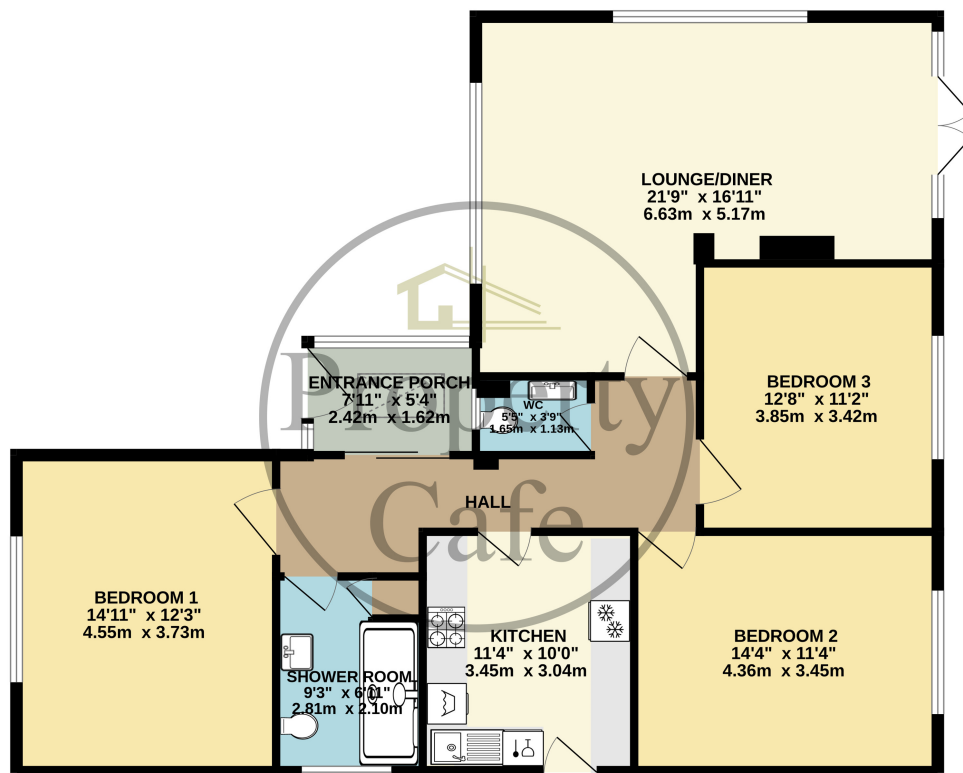
£539,950



- Immaculate Three Bedroom Bungalow
- Three Double Bedrooms
- Enclosed UPVC Entrance Porch
- Spacious Entrance Hall With Ample Storage
- 'L' Shaped Triple Aspect Lounge-Diner
- Modern Shower Room With Bespoke Suite
- Separate Fully Tiled Cloakroom
- Spacious & Modern Fitted Kitchen
- Lovely Landsaped Front Garden
- Detached Garage & Off Rd Parking
- Rear Garden with Patio, Lawn & Decking Area
- Good Size Boarded Loft With Skylight
- An Immaculate Bungalow Throughout
- Central Heated & Fully Double Glazed
- Sought After Corner Location
- Sought After Little Common Location
- Viewing Highly Recommended



GROUND FLOOR
1133 sq.ft. (105.2 sq.m.) approx.



TOTAL FLOOR AREA : 1133 sq.ft. (105.2 sq.m.) approx.
Whilst every attempt has been made to ensure the accuracy of the floorplan contained here, measurements of doors, windows, rooms and any other items are approximate and no responsibility is taken for any error, omission or mis-statement. This plan is for illustrative purposes only and should be used as such by any prospective purchaser. The services, systems and appliances shown have not been tested and no guarantee as to their operability or efficiency can be given.
Made with Metropix 5.0203

