



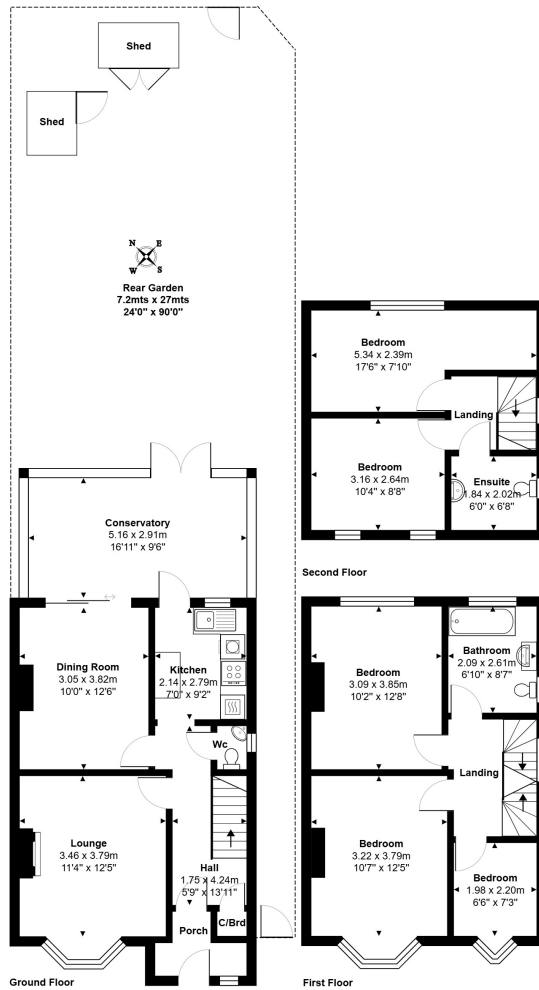
## **Gordon Close, Staines-upon-Thames, Surrey, TW18 1AP**

WELL PRESENTED & SPACIOUS FIVE BEDROOM SEMI-DETACHED PROPERTY SITUATED ALONG THIS MUCH SOUGHT AFTER CLOSE IDEALLY POSITIONED WITHIN MOMENTS OF MAINLINE TRAIN STATION & TOWN CENTRE. The property has been significantly extended and benefits from a spacious lounge, dining room leading to conservatory, fitted kitchen, downstairs W.C, five well-proportioned bedrooms, two modern white bath/shower rooms, large secluded rear garden and off-street parking. Viewings Highly Recommended!

## ROOM DESCRIPTIONS

---

# FLOORPLAN



Total Area: 130.3 m<sup>2</sup> ... 1402 ft<sup>2</sup>  
All measurements are approximate and for display purposes only.