



449, Chester Road
Northwich CW8 2AG

£870,000

www.westates.co.uk
01606 331784



A fine, detached Hartford home with over 2,500 ft² of living space with mature gardens on a plot of over 0.3 acres.

- 2,500 ft² Accommodation
- Four Reception Rooms
- Breakfast Kitchen & Utility
- Five Double Bedrooms
- Three Bath/Shower Rooms
- Large Mature Gardens
- Garage & Ample Parking

Description

A superb, detached family in one of the village's prime locations with large mature gardens on a plot totalling 0.3 acres. Offering over 2,500 ft² of living space with light and airy rooms ideal for even the latest families. With double glazed windows and gas central heating, the accommodation comprises: Reception porch, entrance hall, cloakroom/WC, extended lounge, formal dining room, family room, office, kitchen breakfast room and utility room on the ground floor and a lovely study landing, five double bedrooms and three bathrooms on the first floor. The property is well set back from Chester road with a large front garden and driveway which leads to an integral garage and with space to park several cars. The south facing rear garden is private and backs onto open fields.



Location

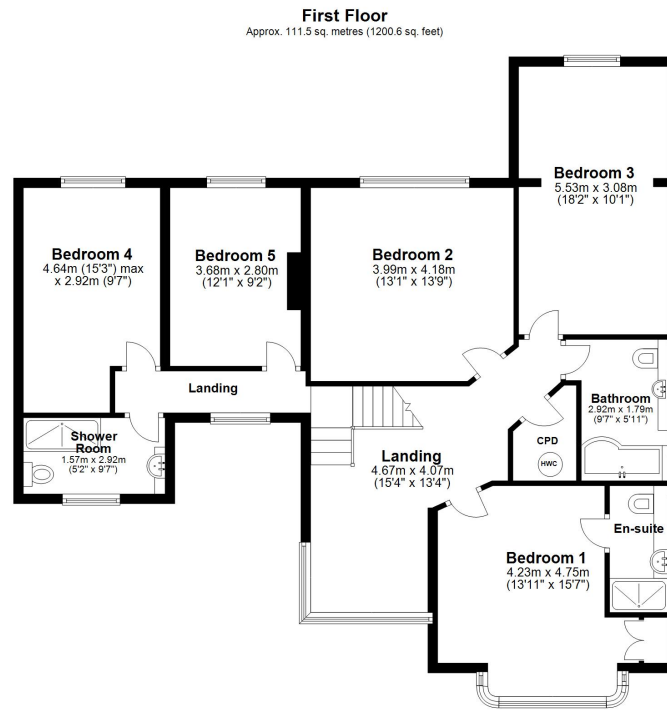
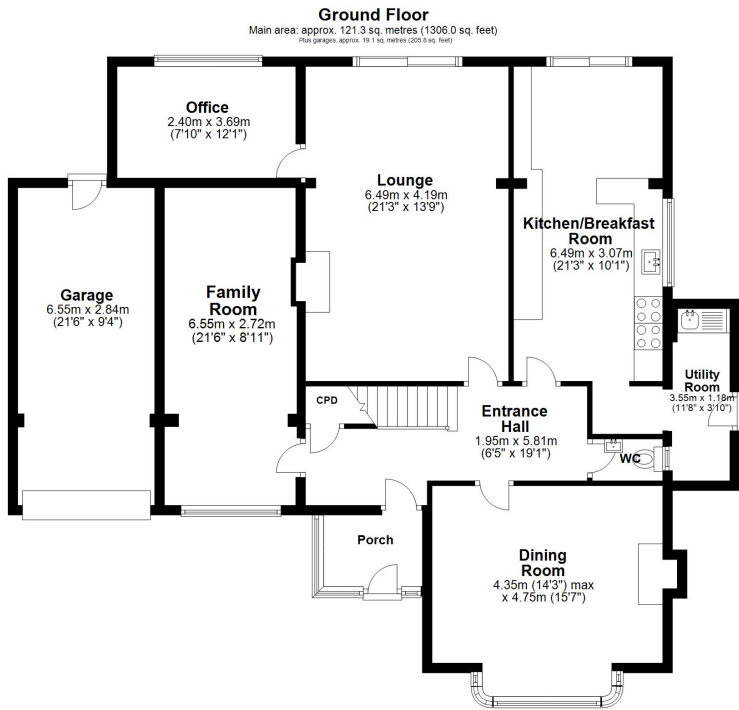
Hartford is a bustling Cheshire village with an excellent range of local facilities including a hub of shops at its centre, offering everything you could want or need. There are three public house's in the village, The Red Lion, The Coachman and Hartford Hall Hotel, in addition there are two wine bars/bistros; Chime, located in the heart of the village and The Hart of Hartford, which is located on School Lane. Two railway stations serve the village with the West Coast Main Line service running through Hartford, enabling access to London within two hours. Trains to Manchester and Chester run from Greenbank station. The A556 and A49 easily facilitate access to the region's major road network with Manchester and Liverpool airports both within 20 miles. Above all, where Hartford really excels is its range of excellent schools, the well regarded Grange private school is less than a mile away and both Hartford High and St Nicholas Catholic High School are within walking distance as are the four village primary schools; Hartford Primary School, St Wilfred's Catholic Primary School, Hartford Manor Community School and the private Grange primary School. Nearby Northwich caters for a more comprehensive range of amenities, including leading supermarkets with Waitrose, Sainsbury's and Tesco all represented.

Tenure

FREEHOLD

EPC Rating:





Main area: Approx. 232.9 sq. metres (2506.7 sq. feet)
Plus garages: approx. 19.1 sq. metres (205.8 sq. feet)



Boomin

These particulars, whilst believed to be accurate are set out as a general outline only for guidance and do not constitute any part of an offer or contract. Intending purchasers should not rely on them as statements of representation of fact, but must satisfy themselves by inspection or otherwise as to their accuracy. All measurements quoted are approximate. We are unable to confirm the working order of any fixtures and fittings including appliances that are included in these particulars. No person in this firm's employment has the authority to make or give any representation or warranty in respect of the property.