

FOR
SALE



21 Stewarts Way, Marlow, Buckinghamshire SL7 3QL

PROPERTY DESCRIPTION

A lovely family home in catchment for excellent schools, this house has potential both to extend at the rear or up into the loft, STPP. The front door is accessed down some steps from the road and opens into an entrance hall with cloakroom. The dual aspect lounge/diner has stairs up to the bedrooms and opens to a well fitted kitchen. The kitchen has a lovely outlook over the garden and a door to the side steps down to the garden. Upstairs there are two double bedrooms, a single bedroom used as a home office and a good sized family bathroom.

Outside at the rear there is a lovely west facing garden with patio/dining area and plenty of room for kids to play. At the front there is offstreet parking and a garage.

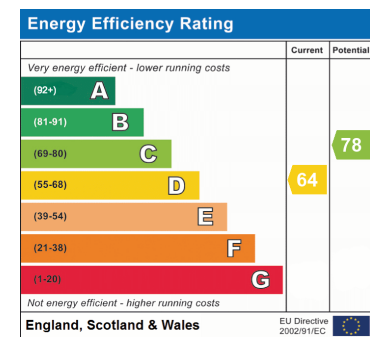
LOCATION: The house is set on an elevated road at the quiet end of Marlow Bottom, which offers village living with wonderful woodland walks, an Italian restaurant, coffee shop, pharmacy, Rebellion Brewery and a local convenience store as well as being close to Marlow town centre and the River Thames. There is ease of access to the M40 and M4, London is within easy reach and Heathrow Airport only 22 miles away.

POINTS OF INTEREST

- Potential to extend/convert the loft STPP
- West facing garden
- Lounge/diner
- Kitchen overlooking the garden
- Off street parking and garage
- Close to woodland walks
- In catchment for Burford primary, Great Marlow and excellent grammar schools



ROOM DESCRIPTIONS

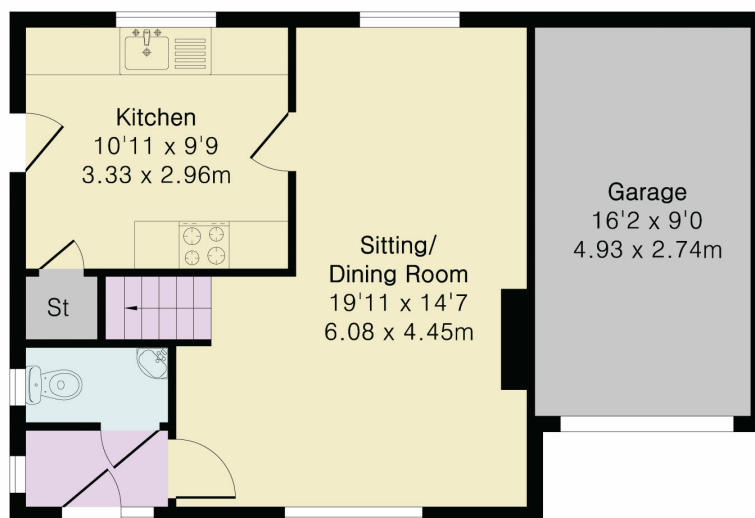


**Approximate Gross Internal Area 832 sq ft - 78 sq m
(Excluding Garage)**

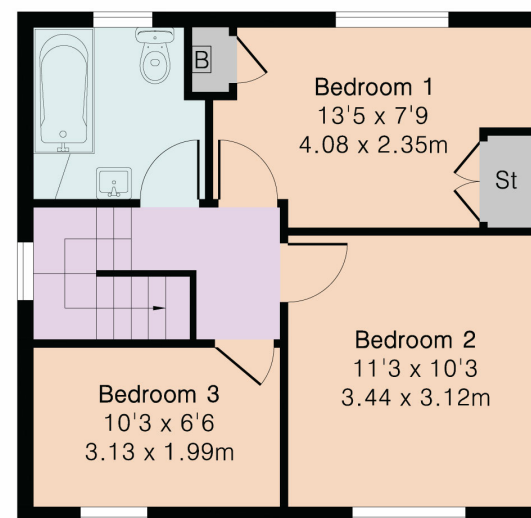
Ground Floor Area 416 sq ft – 39 sq m

First Floor Area 416 sq ft – 39 sq m

Garage Area 145 sq ft – 14 sq m



Ground Floor



First Floor