



Tempest Avenue, Potters Bar, Hertfordshire, EN6

£685,950

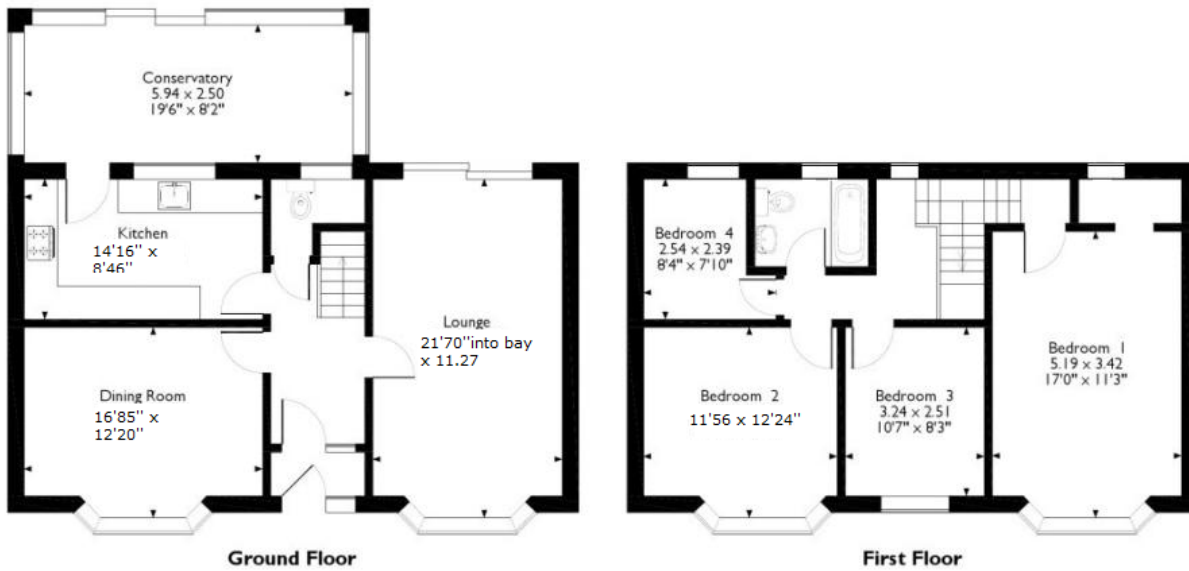
- **FOUR BEDROOM SEMI DETACHED**
- **POTENTIAL FOR LOFT CONVERSION (STPP)**
- **15 MINUTE WALK TO POTTERS BAR MAINLINE STATION**
- **OFF STREET PARKING FOR SEVERAL CARS**
- **POTENTIAL FOR REAR EXTENSION (STPP)**
- **DUAL ASPECT LIVING ROOM**

Tempest Avenue, Potters Bar, Hertfordshire, . EN6

£685,950 Freehold

This large FOUR BEDROOM semi detached home is ideally located on a corner plot on this quiet turning in Potters Bar, just moments from Oakmere Park and Potters Bar High Street, and just a 15 minute walk to Potters Bar Mainline Station. The property having had a double storey side extension benefits from porch entrance a large dual aspect lounge to one side, dining room, separate kitchen and downstairs cloakroom on the ground floor, whilst the first floor comprises of Four bedrooms one of which a large dual aspect with potential to add an en-suite, plus separate family bathroom. Externally the home boasts a private garden with access to rear plus off street parking to the front for several cars.

Tempest Avenue, Potters Bar, Hertfordshire



Energy Efficiency Rating		
	Current	Potential
Very energy efficient - lower running costs		
(92+) A		
(81-91) B		
(69-80) C		74
(55-68) D	57	
(39-54) E		
(21-38) F		
(1-20) G		
Not energy efficient - higher running costs		
England, Scotland & Wales	EU Directive 2002/91/EC	

