

Sunningdale, 21 Portarlington Road, Westbourne BH4 8BX

Guide Price £250,000 Share of Freehold

MAYS
ESTATE AGENTS





Property Summary

Forming part of a small and exclusive development, this two double bedroom top floor apartment has light and spacious accommodation throughout and enjoys a highly convenient positioning in the 'Golden Grid', moments from the amenities of Westbourne Village.



Key Features

- Generous entrance hallway with two storage cupboards
- Living/dining room with dual aspect
- Modern fitted kitchen
- Two double bedrooms
- Shower room
- Communal Gardens
- Garage
- Moments from Westbourne
- Share of Freehold Apartment
- No forward chain



About the Property

On entering the property there is a large private hallway that has two storage cupboards, and the hallway provides independent access to all rooms of the apartment. The living/dining room is a lovely room that is flooded with light from two large dual aspect windows.

The kitchen is fitted with a range of modern units and integrated appliances and there is plentiful space for free-standing appliances. The principal bedroom has fitted wardrobes, and the second bedroom is also a comfortable double. Both bedrooms are serviced by a contemporary shower room

Outside the property sits within well-tended communal grounds and a residents' driveway leads to the residents garaging, one of which is conveyed with the property.

A well-presented apartment with a highly convenient address.

Tenure: Share of Freehold

Managing Agent: Rebbecks

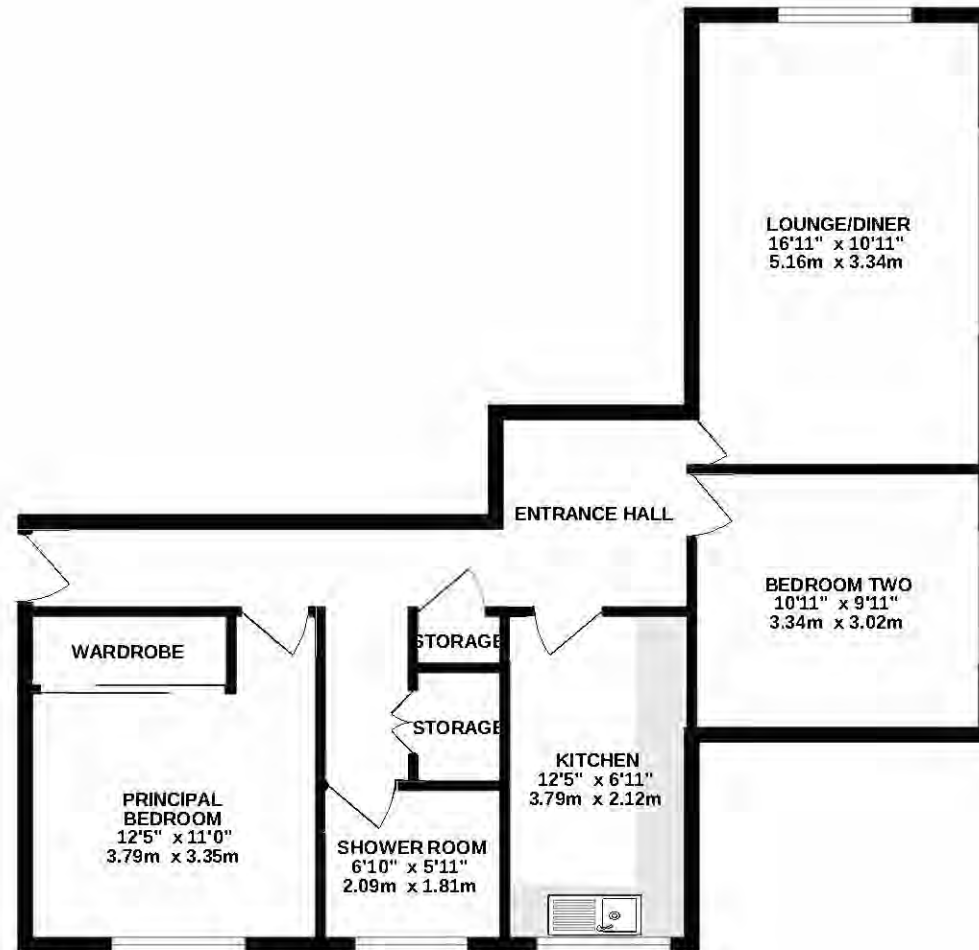
Service Charge: Approximately £1794.50 per annum

Council Tax Band: C

Notes: Holiday lets/airbnb & pets are not permitted



GROUND FLOOR
715 sq.ft. (66.4 sq.m.) approx.



TOTAL FLOOR AREA: 715 sq.ft. (66.4 sq.m.) approx.

While every attempt has been made to ensure the accuracy of the floorplan contained here, measurements of doors, windows, rooms and any other items are a guideline and no responsibility is taken for any error, omission or misstatement. This plan is for illustrative purposes only and should be used as such by any prospective purchaser. The services, systems and appliances shown have not been tested and no guarantee as to their usability or efficiency can be given.
Made with Metro.pl ©2024



About the Location

Situated in a highly popular and sought-after area within easy walking distance of Westbourne village providing an eclectic mix of bars, excellent restaurants and cafes alongside a selection of exclusive boutiques and independent shops. Alum Chine is also within walking distance, offering seven miles of award-winning, blue-flag, sandy beaches. Also conveniently located to give easy access to the dual carriageway and excellent public transport links.

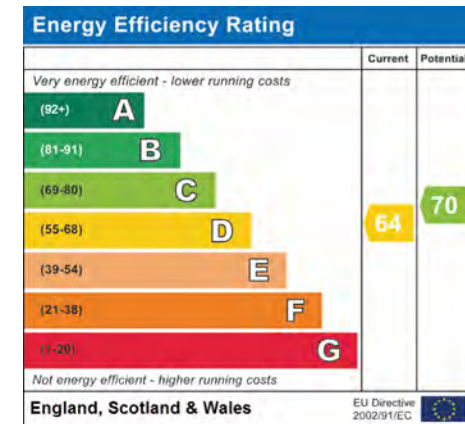
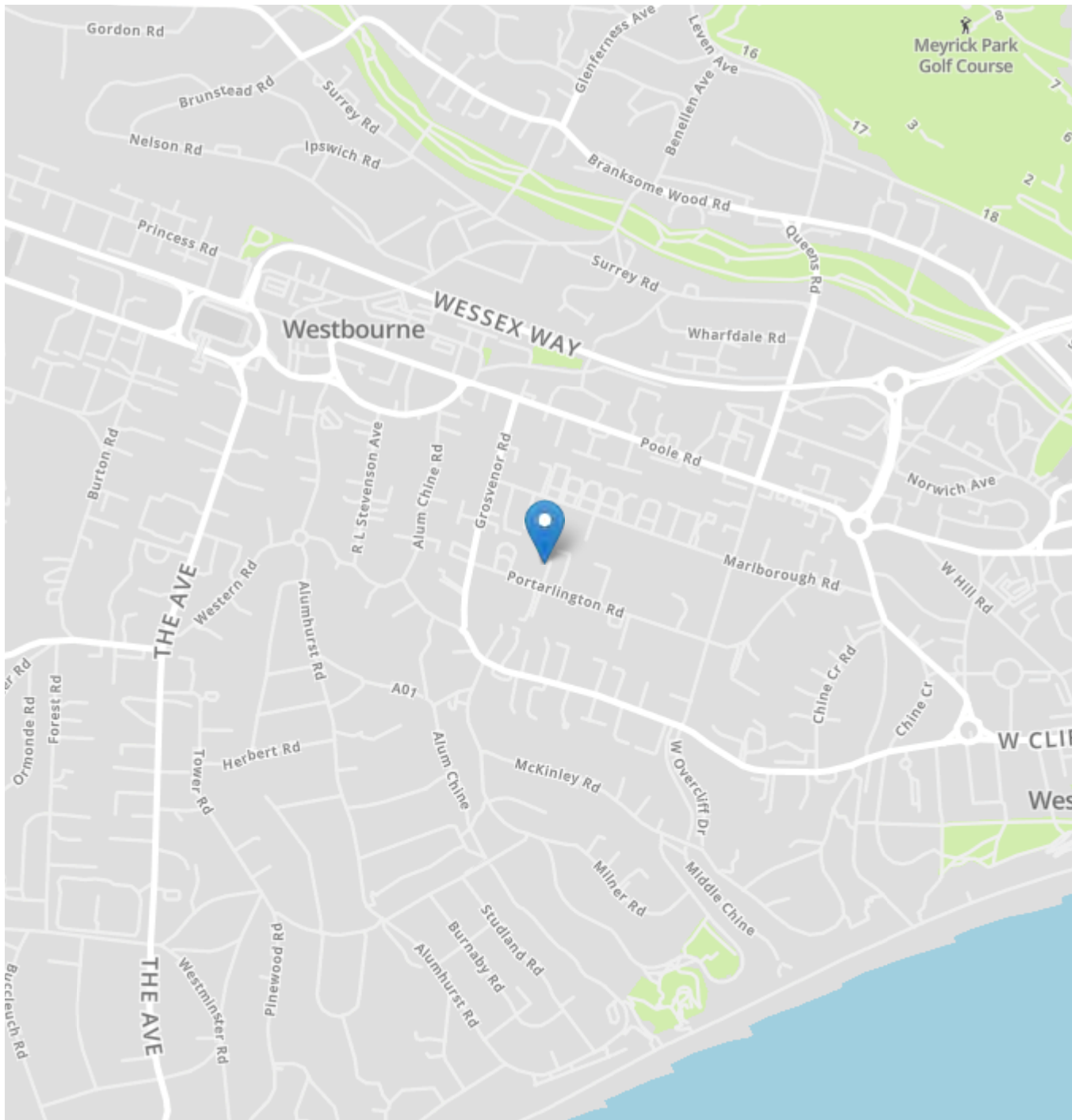


About Mays

We understand that property is a people business, and pride ourselves on having a diverse and multi-talented team of property professionals.

We have been successfully selling clients homes for more than 30 years, and our wealth of local knowledge combined with our experience in both the London market and overseas property, means our team can handle anything that comes their way.

Our reputation is a result of the unsurpassed level of service we offer and importantly the results we achieve for our clients. Our ethos is to 'Bring People and Property Together', after all it's what we've been doing so well for so long.



IMPORTANT NOTICE

Mays and their clients give notice that:

1. They have no authority to make or give any representations or warranties in relation to the property. These particulars do not form part of any offer or contract and must not be relied upon as statements or representations of fact.
2. Any areas, measurements or distances are approximate. The text, photographs and plans are for guidance only and are not necessarily comprehensive. It should not be assumed that the property has all necessary planning, building regulation or other consents and Mays have not tested any services, equipment or facilities. Purchasers must satisfy themselves by inspection or otherwise.

New Developments (where applicable)

Plans and specification are subject to change during the course of construction. All measurements are approximate. The developers reserve the right to alter and amend the information given in these particulars as necessary. Nothing contained herein shall be, or shall be deemed to be, part of any contract. The approximate dimensions quoted indicate the maximum room sizes and are scaled from plans before construction has commenced. They are not intended to be used for carpet sizes, appliance spaces or items of furniture.

Mays Estate Agents - Sales and Head Office

290 Sandbanks Road, Lilliput, Dorset BH14 8HX

T: 01202 709888

E: sales@maysestateagents.com (sales)

E: lettings@maysestateagents.com (lettings)

www.maysestateagents.com

MAYS
ESTATE AGENTS