



25, Elmwood Court

BALDOCK, Hertfordshire,
SG7 6AY

Freehold £110,000

A country
properties

Country Properties are delighted to offer a well-presented CHAIN-FREE first floor retirement flat located in central Baldock. This fantastic property is situated perfectly, being on the doorstep of local amenities such as the nearby GP surgery, pharmacy and Tesco. Elmwood Court also features well maintained communal gardens, communal lounge, laundry room and site manager.

- Well presented first floor apartment
- One double bedroom
- Residents lounge, laundry room and beautiful communal gardens
- In-house manager with 24-hour Tunstall pull cord system
- Proximity to excellent local amenities
- CHAIN FREE
- Council Tax Band B
- EPC Rating: TBC

Accommodation

Entrance Hallway

Wall mounted Tunstall telephone entry system, large storage cupboard housing hot water tank, carpeted flooring.

Kitchen

Range of wall mounted and base level units with work surface over and inset sink with drainer, integral electric oven with electric hob and extractor hood over, space for fridge freezer.

Lounge

Window and Juliette balcony to rear aspect, feature electric fireplace, carpeted flooring, wall mounted electric storage heater.

Bedroom

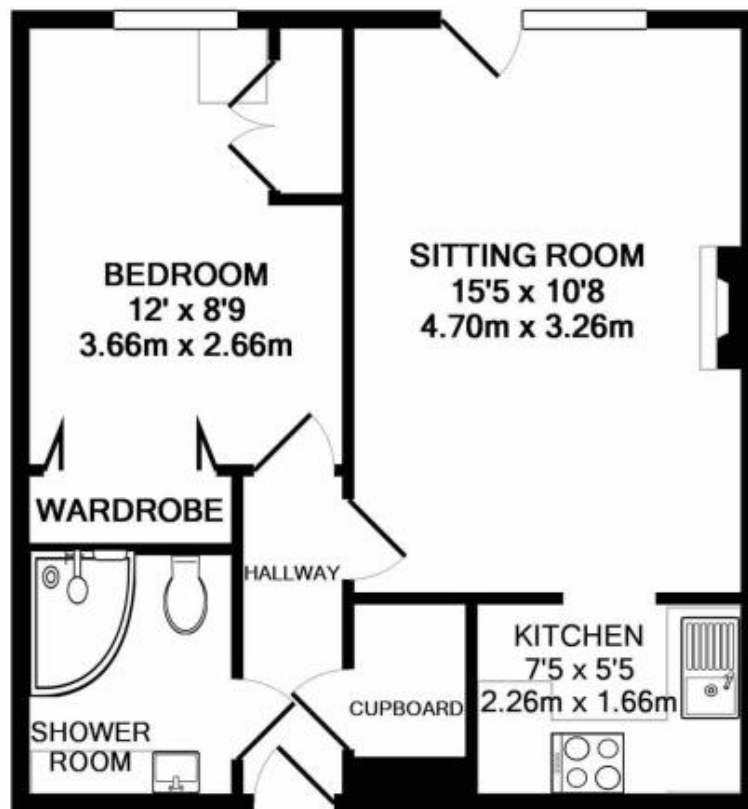
Window to rear aspect, wall mounted electric storage heater, built-in wardrobes, carpeted flooring, wall mounted electric heater.



Bathroom

WC, wash basin with vanity unit under, heated towel rail, cubicle shower, tiled walls.





TOTAL APPROX. FLOOR AREA 401 SQ.FT. (37.3 SQ.M.)

Whilst every attempt has been made to ensure the accuracy of the floor plan contained here, measurements of doors, windows, rooms and any other items are approximate and no responsibility is taken for any error, omission, or mis-statement. This plan is for illustrative purposes only and should be used as such by any prospective purchaser. The services, systems and appliances shown have not been tested and no guarantee as to their operability or efficiency can be given
Made with Metropix ©2018

All measurements are approximate and quoted in metric with imperial equivalents and for general guidance only and whilst every attempt has been made to ensure accuracy, they must not be relied on. The fixtures, fittings and appliances referred to have not been tested and therefore no guarantee can be given and that they are in working order. Internal photographs are reproduced for general information and it must not be inferred that any item shown is included with the property. For a free valuation, contact the numbers listed on the brochure

Viewing by appointment only

Country Properties | 39, High Street | SG7 6BG

T: 01462 895061 | E: baldock@country-properties.co.uk

www.country-properties.co.uk

country
properties