



Tabbs Close, Letchworth Garden City, Hertfordshire, SG6 1DW

£265,000

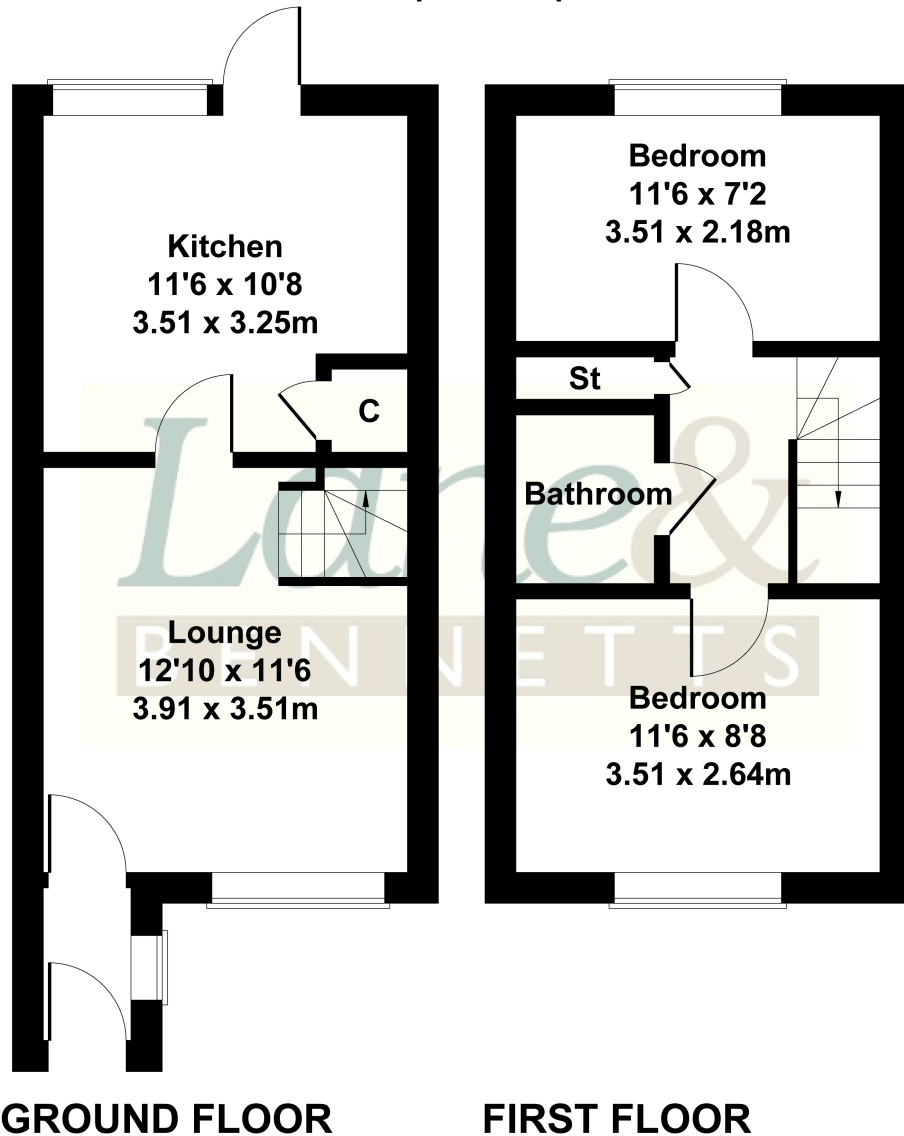
This end of terrace property is beautifully presented with two good size bedrooms, making it perfect for first-time buyers, investors, students or those looking to downsize their home. Tucked away in a small cul de sac, screened with green foliage, its a very private home a mile from the town.

The living area is spacious and bright allowing for a place to relax and unwind. The kitchen offers a vast range of amenities including an oven and washing machine, slimline dishwasher with space to accommodate a tumble dryer. There's a handy deep cupboard and ample space for a breakfast table and chairs.

Lane &
BENNETTS

33 Tabs

Approximate Gross Internal Area
570 sq ft - 53 sq m



Not to Scale. Produced by The Plan Portal 2025
For Illustrative Purposes Only.

- CHAIN FREE
- Spacious living area
- Modern bathroom
- Extra-large garage
- Two good size bedrooms
- Two well-presented gardens
- Recently refurbished kitchen and bathroom
- WALKING DISTANCE TO STATION, NORTON COMMON AND AMENITIES
- GREAT FIRST PURCHASE OR INVESTMENT PROPERTY
- EPC BAND C | COUNCIL TAX BAND C | LEASEHOLD, NO CHARGES

