



 1  1  1 EPC B

£265,000 Leasehold

Apartment 12
St. Athelm Lodge, West Street
Wells, BA5 2GW

**COOPER
AND
TANNER**



Apartment 12

St. Athelm Lodge, West Street

Wells, BA5 2GW

 1  1  1 EPC B

£265,000 Leasehold

DESCRIPTION

Situated just a short walk from all the amenities Wells has to offer is St. Athelm Lodge, a recently built luxury retirement community. We are pleased to offer a bright and spacious, one bedroom, first floor apartment in this desirable development, which benefits from a fully fitted kitchen with integrated appliances, a bright and spacious sitting / dining room, a generous double bedroom with built-in wardrobe, useful storeroom and well-appointed shower room. The development benefits from a beautifully decorated communal residents' lounge with kitchenette, house manager hosting regular events, quizzes and coffee mornings, a pre-bookable guest suite, a lift to all floors, communal gardens, undercover charging point for mobility scooters and a residents' car park.

Upon entering the property is a hallway with video entry system and a large and useful cupboard. The cupboard has plenty of space for coats and shoes along with shelving for further storage. A glazed door leads from the hall into the bright dual aspect sitting/dining room with a Juliette balcony overlooking the gardens. This generous room offers plenty of space for comfortable seating along with a small dining table and has a fireplace with inset electric fire as the focal point. Leading directly off the sitting room, again with a glazed door is the well-appointed kitchen with views over the garden. Featuring a range of high gloss kitchen units with soft close doors and drawers, this well-designed kitchen also benefits from an eye level oven, ceramic hob, integrated fridge, integrated freezer and integrated washer/dryer as well as the choice of normal lighting or ambient lighting.

The double bedroom is particularly generous in size and offers plenty of space for a king size bed and has a built-in wardrobe with mirrored sliding doors. The fully tiled shower room comprises; a good sized corner shower cubicle, a hidden cistern WC, a vanity basin with storage beneath, a mirror with storage cabinet and shaver socket and a heated towel radiator.

The development also offers residents a Careline 24/7 package, with wearable wristband, for added peace of mind.

OUTSIDE

Well-tended gardens surround St. Athelm lodge, with an abundance of mature trees and shrubs offering year round interest. To the rear of the development is a large lawned area with attractive borders and a patio with seating. A wooden shelter offers parking and charging for mobility scooters. To the front of the development is a residents' car park. A pedestrian gate leads from the development towards the shops and a convenient supermarket.

LOCATION

The picturesque City of Wells is located in the Mendip district of Somerset. Wells itself offers a range of local amenities and shopping facilities with four supermarkets (including Waitrose), as well as twice weekly markets, cinema, leisure centre, a choice of pubs and restaurants, dentists and doctors, several churches and both primary and secondary state schools.

For those travelling by train, Castle Cary station (which has direct services to London Paddington) is situated only twelve miles away. Both the City of Bristol and the Georgian City of Bath, a World Heritage Site, are located just 20 miles away and easily accessible.

SERVICE CHARGE

Service Charge – TO BE ADVISED per annum (including all central heating and water, buildings insurance, grounds maintenance, cleaning and maintenance of communal areas, provision of house manager, window cleaning etc)
Ground Rent - TO BE ADVISED

VIEWING

Strictly by appointment with Cooper and Tanner. Tel: 01749 676524

DIRECTIONS

From our office in Broad Street, continue into Priory Road. At the junction turn right into Princes Road, at the traffic lights turn left into Tucker Street and then second left into West Street. St Athelm Lodge can be found directly in front of you.

REF:WELJAT26052023

Local Information Wells

Local Council: Mendip District Council

Council Tax Band: D

Heating: Electric heating (included in service charge)

Services: Mains drainage, water (included in the service charge) and electricity.

Tenure: Leasehold – 999 years from June 2018



Motorway Links

- M4
- M5



Train Links

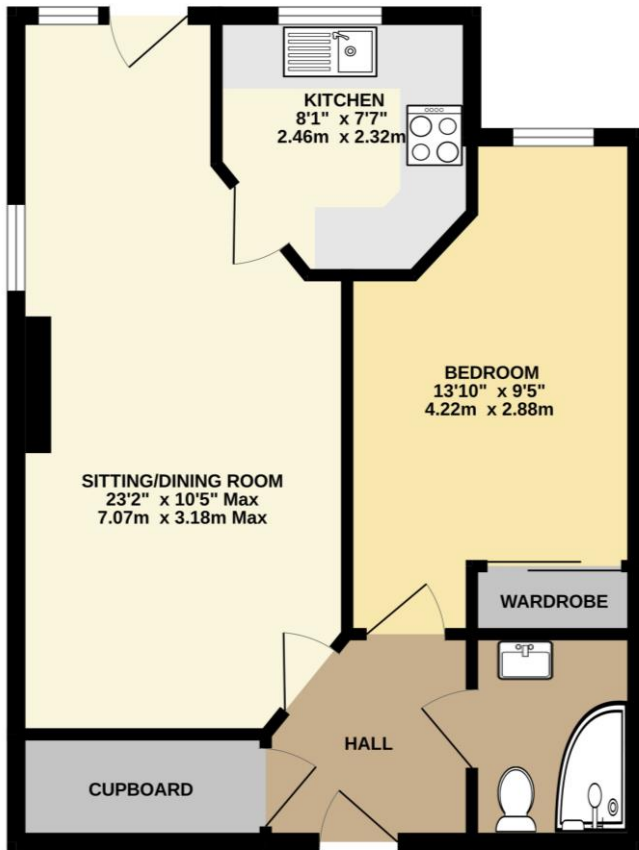
- Castle Cary
- Bath Spa
- Bristol Temple Meads



Nearest Schools

- Wells

FIRST FLOOR APARTMENT
498 sq.ft. (46.3 sq.m.) approx.



TOTAL FLOOR AREA: 498 sq.ft. (46.3 sq.m.) approx.

Whilst every attempt has been made to ensure the accuracy of the floorplan contained here, measurements of doors, windows, rooms and any other items are approximate and no responsibility is taken for any error, omission or mis-statement. This plan is for illustrative purposes only and should be used as such by any prospective purchaser. The services, systems and appliances shown have not been tested and no guarantee as to their operability or efficiency can be given.
Made with Metropix ©2023



WELLS OFFICE
telephone 01749 676524
19 Broad Street, Wells, Somerset BA5 2DJ
wells@cooperandtanner.co.uk

**COOPER
AND
TANNER**

Important Notice: These particulars are set out as a general outline only for the guidance of intended purchasers and do not constitute, nor constitute part of, an offer or contract. All descriptions, dimensions, reference to condition and necessary permissions for use and occupation, warranties and other details are given without responsibility and any intending purchasers should not rely on them as statements or representations of fact but must satisfy themselves by inspection or otherwise as to the correctness of each of them.

