



**19 Syward Row, Wolverton, Milton Keynes,
Buckinghamshire, MK12 5QA**

£300,000 Freehold

- Three Double Bedrooms
- Popular development of Stratford Park
- En suite to master bedroom
- Green Outlook
- Walking distance to mainline train station
- Huge Master bedroom
- Carport
- Off road parking
- EPC Rating B





GROUND FLOOR

Entrance Hall

Doors leading to:

Lounge

4.71m x 4.47m (15' 5" x 14' 8")

Kitchen

3.29m x 2.55m (10' 10" x 8' 4")

Downstairs Cloakroom

Fitted to comprise two piece suite

FIRST FLOOR

Landing

Doors leading to:

Bedroom Two

3.91m x 3.58m (12' 10" x 11' 9")

Bedroom Three

3.91m x 3.31m (12' 10" x 10' 10")

Family Bathroom

Fitted to comprise four piece suite

SECOND FLOOR

Landing

Doors leading to:

Master Bedroom

6.31m x 4.72m (20' 8" x 15' 6")

En Suite

Fitted to comprise three piece suite

EXTERIOR

Rear Garden

Front Garden

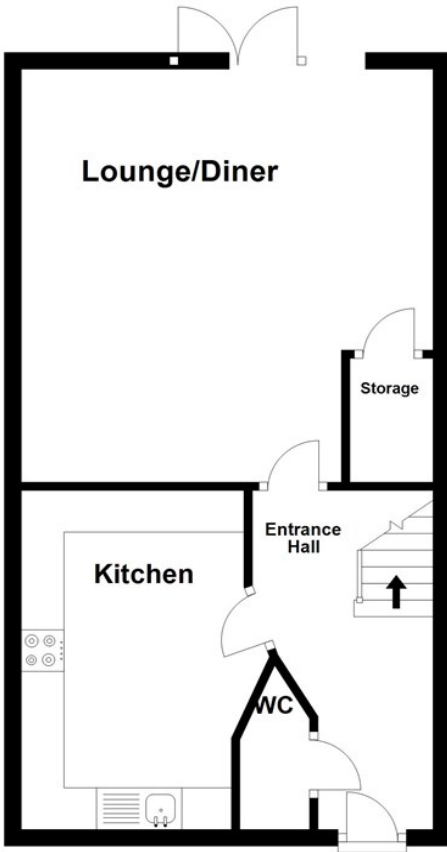
Carport

Providing off road parking for two vehicles

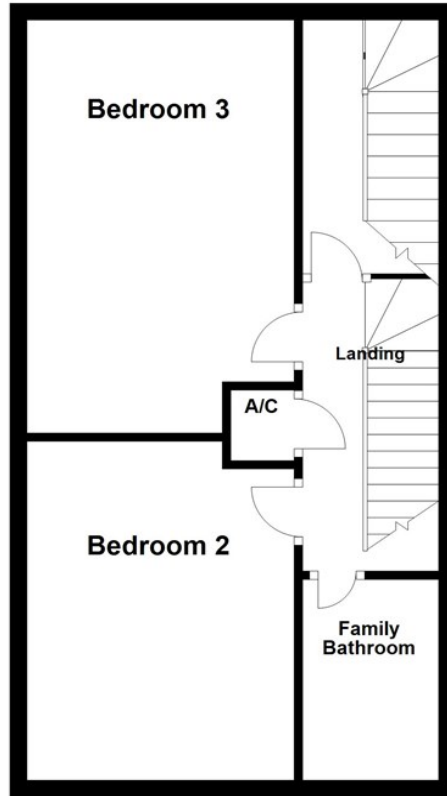
Disclaimer

Whilst we have endeavoured to prepare our sales particulars accurately none of the services, appliances or equipment have been tested. A buyer should satisfy themselves on such matters prior to purchase. Any measurements or distances mentioned in these particulars are for guide reference only. If such particulars are fundamental to a purchase, buyers should rely on their own enquiries. All enquiries should be directed to Elevation Estate Agents in the first instance.

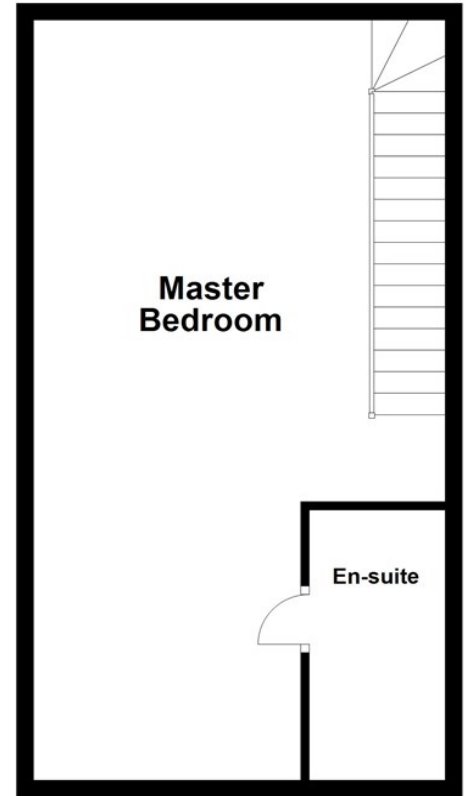
Ground Floor



First Floor



Second Floor



Floor plans are for layout purposes only
Plan produced using PlanUp.

Energy Efficiency Rating		Environmental Impact (CO ₂) Rating	
	Current	Potential	
Very energy efficient - lower running costs			Very environmentally friendly - lower CO ₂ emissions
(92 to 100) A		94	(92 to 100) A
(81 to 91) B	85		(81 to 91) B
(69 to 80) C			(69 to 80) C
(55 to 68) D			(55 to 68) D
(39 to 54) E			(39 to 54) E
(21 to 38) F			(21 to 38) F
(1 to 20) G			(1 to 20) G
Not energy efficient - higher running costs			Not environmentally friendly - higher CO ₂ emissions
England, Wales & N.Ireland	EU Directive 2002/91/EC		England, Wales & N.Ireland
			EU Directive 2002/91/EC