



Byng Drive, Potters Bar, Hertfordshire, EN6

£850,000

- WELL PRESENTED THROUGHOUT
- SPACIOUS LOUNGE/DINING ROOM
- SEPARATE UTILITY ROOM
- ROOF CONVERSION
- EN-SUITE SHOWER ROOM
- LOVELY REAR GARDEN AND PATIO
- 4 BEDROOMS
- MODERN FITTED KITCHEN
- EXTENDED
- FAMILY BATHROOM
- AMPLE OFF STREET PARKING
- OWN DRIVE

108, High Street, Potters Bar, EN6 5AT

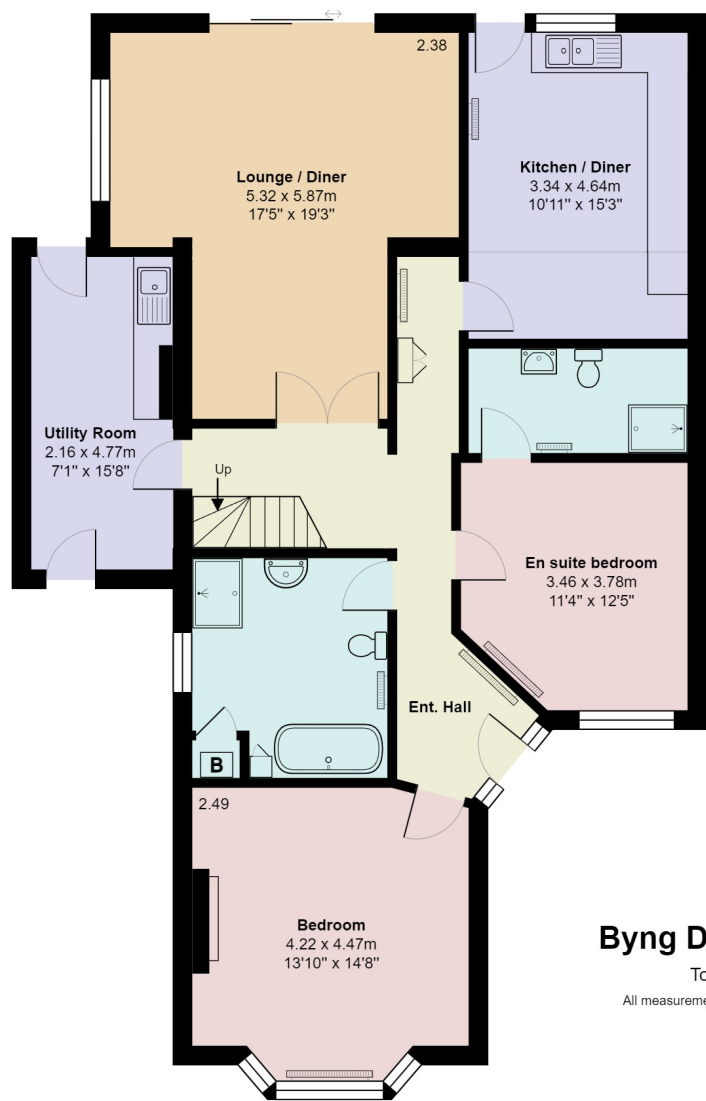
01707 245 555

www.home-counties.com

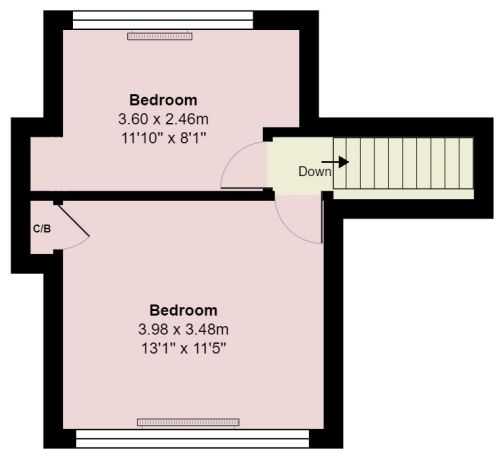
Byng Drive, Potters Bar, Hertfordshire, . EN6

£850,000 Freehold

A VERY WELL PRESENTED ATTRACTIVE 4 BEDROOM SEMI DETACHED BUNGALOW LOCATED IN THIS VERY DESIRABLE ROAD Within easy walking distance from Darkes Lane with a variety of shops and Potters Bar main line Station. The property has been extended and has a roof conversion and therefore offers very good size family accommodation. There are 2 bedrooms on the ground floor, one having an en-suite shower room, (One currently used as a sitting room) and another two bedrooms on the first floor. The Lounge /Dining room is a very good size and has sliding patio doors opening into the garden. Bathroom and en-suite are both modern fitted with white bathroom suites. There is a very well fitted modern kitchen with Neff Hob oven and grill and a Bosch dishwasher. A separate utility room to the side of the property has a stainless steel sink unit with plumbing for a washing machine and ample space for other appliances, also there are doors to the front and rear affording good side access. There is ample parking provider to the front via an own drive and there is a lovely rear garden with a tiered paved patio leading to a lawned area with a large timber workshop/tool shed to the rear with a further decked seating area.



Ground Floor
Area: 117.6 m² ... 1266 ft²



First Floor
Area: 26.7 m² ... 287 ft²

Byng Drive, Hertfordshire EN6

Total Area: 144.3 m² ... 1553 ft²

All measurements are approximate and for display purposes only

