



Brighton Road, South Croydon, CR2 6AF

**Cow & Co**  
LONDON





Guide price of £300,000-£400,000. A stunning first floor two bedroom, two bathroom purpose built apartment built in 2018 by renowned local builders to high specifications. Benefitting from a large beautifully decorated open plan kitchen/reception room, a spacious entrance hall, a large modern bathroom and two very good sized double bedrooms one of which has an en-suite. The property is tastefully decorated throughout and benefits from beautiful views across East and West of South Croydon.

This property is ideally located on the ever popular Brighton Road with shops, bars and restaurants all within easy distance and just minutes from Sanderstead and Purley Oaks station with links to London Victoria, London Bridge and Gatwick airport. There are many bus routes close by and Sanderstead village is just a short drive away.

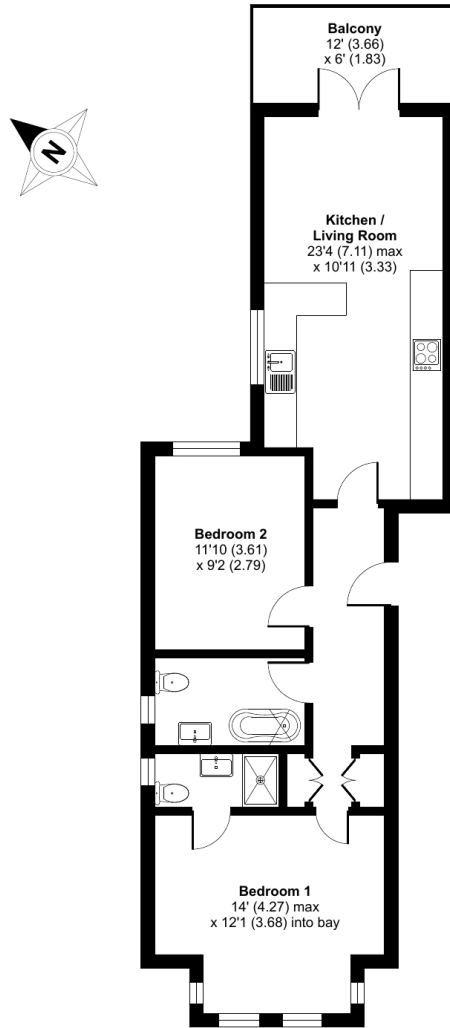


- Two double bedroom apartment
- Two bathrooms (one en-suite)
- West facing balcony
- Communal Garden
- Open plan kitchen living area
- Plenty of natural light and storage
- Underfloor heating throughout
- Garage
- Located on the ever popular Brighton Road

# Brighton Road, South Croydon, CR2

Approximate Area = 693 sq ft / 64.3 sq m

For identification only - Not to scale



FIRST FLOOR



Floor plan produced in accordance with RICS Property Measurement Standards incorporating International Property Measurement Standards (IPMS2 Residential). © nchecon 2023. Produced for Cow & Co Properties Ltd. REF: 1026007

Tel: 0208 065 0010  
Email: [thehub@cowandco-london.com](mailto:thehub@cowandco-london.com)  
Web: [cowandco-london.com](http://cowandco-london.com)

Agents note: All measurements are approximate and whilst every attempt has been made to ensure accuracy they are for general guidance only and must not be relied on. The fixture and fittings referred to have not been tested and therefore no guarantee can be given that they are in working order. Internal photographs are reproduced for general information and it must not be inferred that any item shown is included with the property.

# Cow & Co

LONDON