

5 Fern Close

HAWKINGE, Folkestone
CT18 7ED

£300,000 FREEHOLD

FOR SALE WITH BURNAP + ABEL... Welcome to this charming 2 bed semi-detached bungalow in the serene Fern Close, Hawkinge. Tucked away in a quiet cul de sac, this home offers the perfect retreat from the hustle and bustle of everyday life. Step inside to find a recently replastered lounge/diner, ideal for cosy evenings spent with loved ones. The kitchen is functional and inviting, while the wet room adds a touch of convenience to your daily routine. Two spacious double bedrooms provide ample space for relaxation and rest. Outside, a detached garage and driveway offer convenience and storage solutions for your vehicles and outdoor equipment. The peaceful surroundings of Fern Close make this property an ideal place to call home. Don't miss out on the opportunity to make this beautiful house yours - schedule a viewing today!



Entrance Hall

Lounge/Dining Room

17' 7" x 11' 3" (5.36m x 3.43m)

Kitchen

10' 6" x 7' 4" (3.20m x 2.24m)

Shower Room

6' 5" x 6' 3" (1.96m x 1.91m)

Bedroom One

12' 5" x 9' 4" (3.78m x 2.84m)

Bedroom Two

9' 3" x 8' 1" (2.82m x 2.46m)

Garage

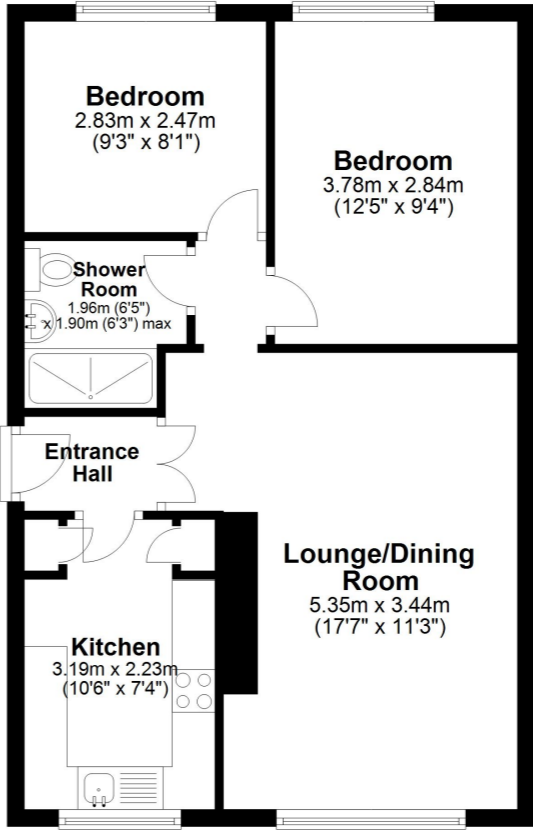
16' 1" x 7' 8" (4.90m x 2.34m)

Driveway

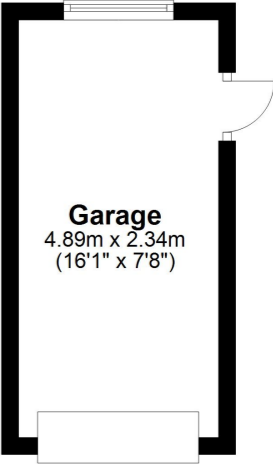
Rear Garden

Ground Floor

Approx. 53.1 sq. metres (571.5 sq. feet)



Outbuilding
Approx. 11.4 sq. metres (123.2 sq. feet)



Total area: approx. 64.5 sq. metres (694.7 sq. feet)

Whilst every attempt has been made to ensure the accuracy of the floor plan contained here, measurements of doors, windows, rooms and any other items are approximate and no responsibility is taken for any error, omission or mis-statement. This plan is for illustrative purposes only and should be used as such by any prospective purchaser.
Plan produced using PlanUp.

