



Brockley  
Spondon  
Derby  
DE21 7JE

Offers In Excess Of £173,000

bettermove



# Brockley Derby

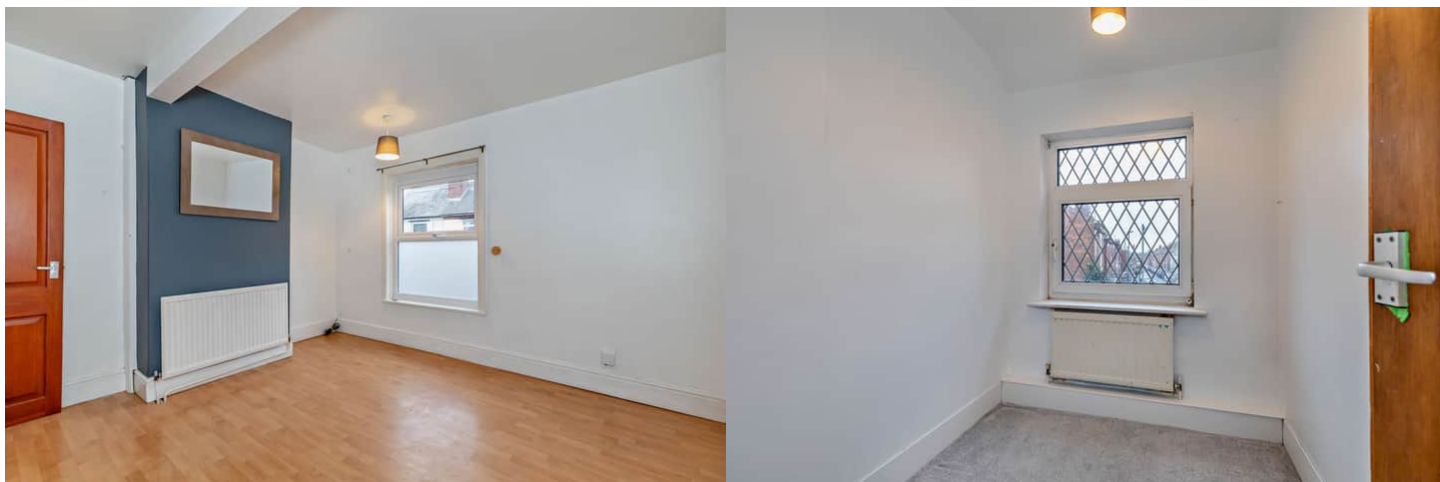
Bettermove are proud to present this 3 bedroom Terraced House in Spondon, available with no forward chain.

The property benefits from double glazing, gas central heating throughout and has ample on street parking available nearby. The council tax band is A.

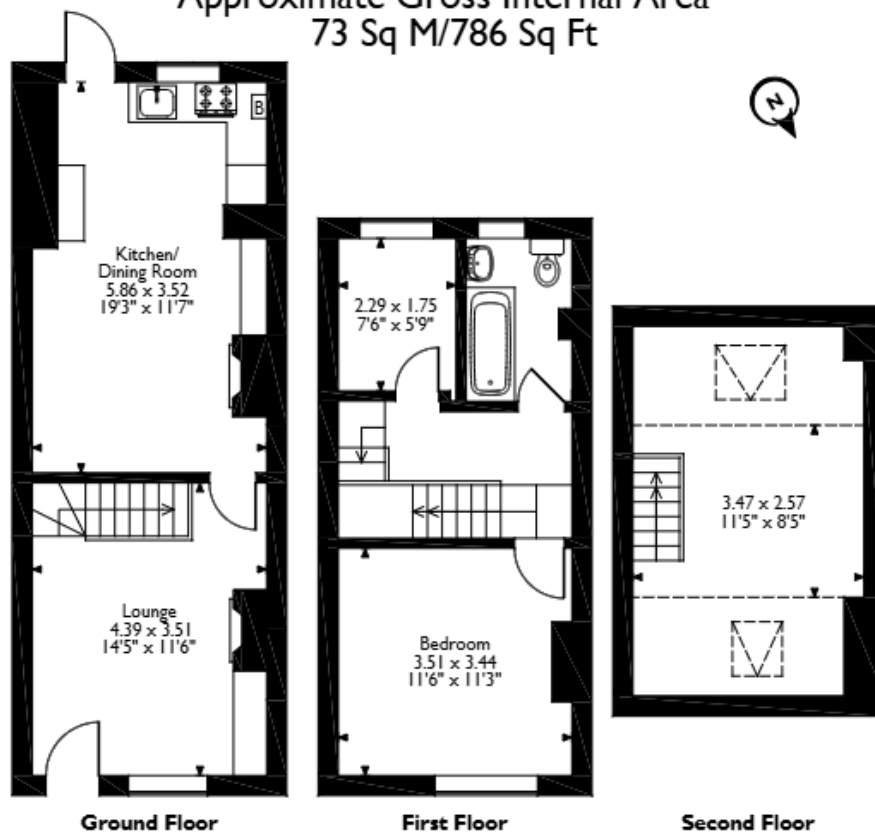
The interior of this beautifully presented property comprises a spacious living room, the fitted kitchen and the dining room. The first floor consists of one double bedroom, single room and the family bathroom. The second floor hosts the third bedroom. The exterior of the property boasts a private rear garden, perfect for enjoying the summer months.

Located in the popular residential area of Spondon, the property is close to a range of amenities, including shops, supermarkets, restaurants and pubs. Excellent transport connections can be found from Spondon Train Station, the A52 and many local bus routes.

This exciting opportunity should not be missed! All enquiries can be made through Bettermove on 0330 004 0050.



Brockley, Spondon, Derby  
Approximate Gross Internal Area  
73 Sq M/786 Sq Ft



Please note that the location of doors, windows and other items are approximate and this floorplan is to be used for illustrative purposes only. Unauthorized reproduction is prohibited.





20-22 Bridge End, Leeds, LS1 4DJ  
t: 0330 004 0050 e: [hello@bettermove.co.uk](mailto:hello@bettermove.co.uk)  
[www.bettermove.co.uk](http://www.bettermove.co.uk)