

FOR
SALE



58 Hunderton Road, Hereford HR2 7AG

£367,500 - Freehold

22, Broad Street, Hereford, HR4 9AP 01432 355455 hereford@flintandcook.co.uk

PROPERTY SUMMARY

A newly refurbished 3 bedroom detached house offering ideal family accommodation situated in a convenient residential location. The property, which is offered For Sale with no onward chain, provides spacious accommodation with 3 bedrooms, 3 reception rooms, a superb fitted kitchen, modern bathrooms, lovely rear garden, a useful home office, gas central heating, garage and driveway parking and we highly recommend an internal inspection.

POINTS OF INTEREST

- *3 bedroom detached house*
- *Convenient residential location*
- *Beautifully presented throughout*
- *Modern kitchen & bathrooms*
- *Garage & driveway parking*
- *Enclosed rear gardens*
- *No onward chain*
- *Must be viewed!*



ROOM DESCRIPTIONS

Double glazed entrance door leading into the

Entrance Porch

Tiled floor, double glazed windows to the side aspect and wooden door leading into the

Spacious Reception Hall

Wooden flooring, carpeted stairs leading to the first floor, door and steps leading down to the CELLAR, radiator and smoke alarm.

Living Room

Wooden laminate flooring, radiator, frosted double glazed window to the front aspect, recessed spotlighting and limestone fireplace with slate hearth and Gazgo Reflex 75 log-effect gas fire.

Sitting Room

Wooden laminate flooring, double glazed window to the front aspect, 2 radiators, small access to the fusebox and limestone fireplace with slate hearth and Dovre Vintage 35 woodburning stove.

Entrance Hall with door leading into the

Open-plan Dining/Family Space

With wooden laminate flooring, radiator, recessed spotlighting and opening into the Kitchen, sliding doors into the Sitting Room and sliding doors out to the rear garden and door leading into the

Downstairs Shower Room

With porcelain tiled floor, double width shower cubicle with mains fitment rainfall showerhead over, low flush WC, vanity wash hand-basin with storage under, frosted double glazed window to the rear aspect and built-in storage cupboard with fitted shelving, heated towel rail, recessed spotlighting and extractor.

Kitchen

An immaculate and newly fitted kitchen with matching wall and base units, laminate worksurfaces, stainless steel sink unit with mixer tap over, 4-ring gas hob, double electric oven, integrated slimline dishwasher, integrated wine-cooler, internal pull-out larder, 2 pull-out spice racks, wooden laminate flooring, recessed spotlighting, dual aspect double glazed windows to the side and rear and opening into the

Utility

Fitted wall and base units, laminate worksurface space, under-counter space and plumbing for washing machine and tumble dryer, space for free-standing fridge/freezer and space for under-counter fridge/freezer, double glazed window to the rear aspect, recessed spotlighting, radiator and double glazed door leading out to the rear garden.

First floor landing

Fitted carpet, dual aspect double glazed windows to the front and rear aspect with opening into the

Inner landing

With loft hatch, double glazed window to the rear aspect and door through to the

Bathroom

Suite comprising P-shaped panelled bath and mains fitment rainfall showerhead over, tiled surround, low flush WC, vanity wash hand-basin with storage below and to the side, heated towel rail, frosted double glazed window, radiator, wooden flooring, recessed spotlighting.

Bedroom 1

Fitted carpet, radiator, double glazed window to the front aspect.

Bedroom 2

Radiator, double glazed window to the front aspect.

Bedroom 3

Fitted carpet, electric radiator and double glazed window overlooking the rear aspect.

Outside

The beautiful rear garden contains 2 apple trees and 2 pear trees, mature loganberries and rhubarb and a net covered brassica cage. There is a recently installed greenhouse with automatic vents. Rockery with established acer trees, pond with goldfish and a large area of lawn enclosed by hedging and fencing to maintain privacy. Outside tap and 2 useful outside store sheds. There is also a superbly presented covered seating area, ideal for entertaining and side access to both sides of the property. To the front there are 2 private driveways enclosed by brick-walling and gates and the GARAGE has an up-and over door, electric and light points and door leading into the HOME OFFICE with feature woodburning stove and single glazed window to the rear and door leading out to the rear garden.

Services

Mains water, electricity, drainage and gas are connected. Telephone (subject to transfer regulations). Gas-fired central heating.

Outgoings

Council tax band D - payable 2024/25 £2307.34.

Water and drainage - rates are payable.

Money laundering regulations

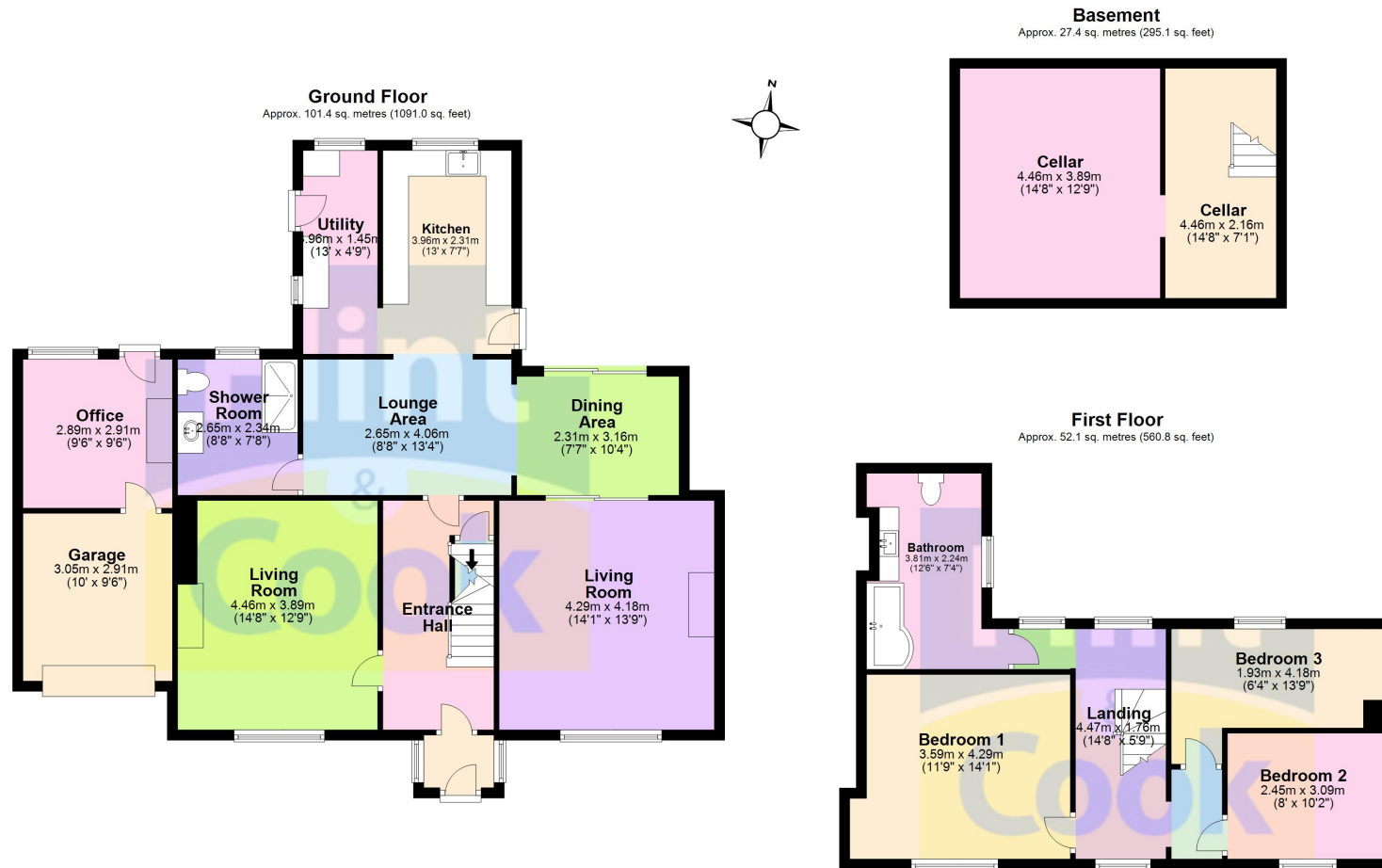
Prospective purchasers will be asked to produce identification, address verification and proof of funds at the time of making an offer.

Viewing

Strictly by appointment through the Agent, Flint & Cook, Hereford (01432) 355455.

Directions

Proceed south out of Hereford City along Greyfriars Bridge taking the 2nd exit towards Belmont, then take the 2nd turning on the right onto Hunderton Road, and at the roundabout take the second exit continuing on to Hunderton Road, the property is then situated on the right hand side as indicated by the agent's For Sale board. What3words - bats.relay.drill



Total area: approx. 180.9 sq. metres (1946.9 sq. feet)

This plan is for illustrative purposes only
Plan produced using PlanUp.

These particulars are prepared for the guidance only of prospective purchasers. They are intended to give a fair and overall description of the property and do not constitute the whole or any part of an offer or contract. Any information contained herein (whether in text, plans or photographs) is given in good faith but should not be relied upon as being a statement or representation of fact. Any plans provided by the agents and/or with the sales particulars are intended for guidance purposes only; we cannot guarantee the accuracy and scale of any plans, and they do not form any part of the sales contract. Nothing in these particulars shall be deemed to be a statement that the property is in good condition or otherwise nor that any services or facilities are in good working order. Any movable contents, fixtures and fittings, (whether wired or not) referred to in these property particulars (including any shown in the photographs) are, unless the particulars say otherwise, excluded from the sale. In the event that the buyer proposes to purchase any movable contents or include them in any offer for the property, the buyer cannot in any respect imply any such inclusion from the property particulars. Any areas, measurements or distances referred to herein are approximate only and may be subject to amendment. It should not be assumed that the property has all necessary planning, building regulation or other consents and these matters must be verified by an intending purchaser. The information in these particulars is given without responsibility on the part of the agents or their clients and neither the agents nor their employees have any authority to make or give any representations or warranties whatever in relation to this property.

Flint & Cook Privacy Statement: We take your privacy very seriously. Your data will not be shared with any other parties without your express permission. Our Data protection Policy can be read in full on the Flint & Cook website, www.flintandcook.co.uk

Energy Efficiency Rating		Current	Potential
Very energy efficient - lower running costs			
(92+)	A		
(81-91)	B		
(69-80)	C		78
(55-68)	D		
(39-54)	E	48	
(21-38)	F		
(1-20)	G		
Not energy efficient - higher running costs			
England, Scotland & Wales			