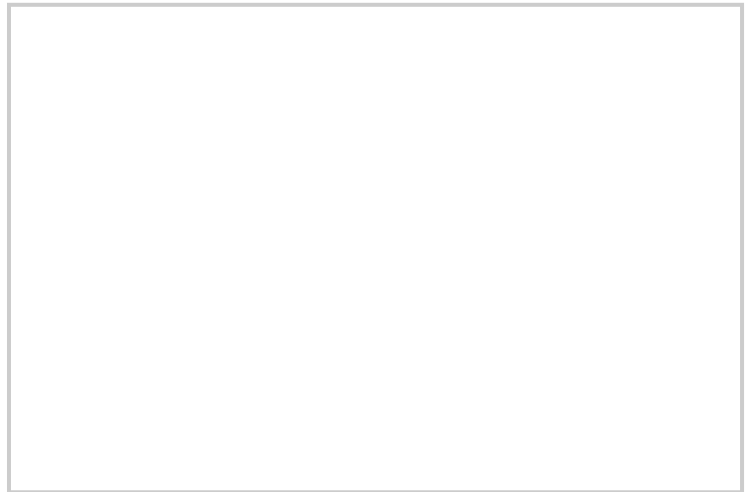


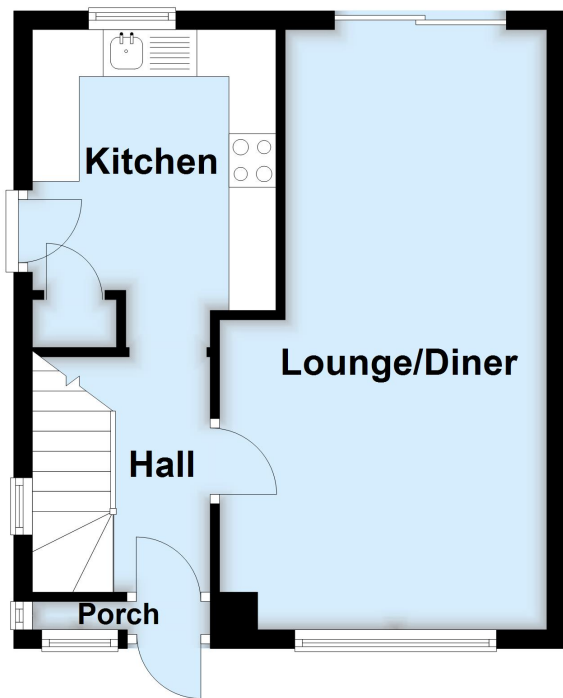
12 Zelah Road, Orpington, Kent, BR5 4JU

## Property Images



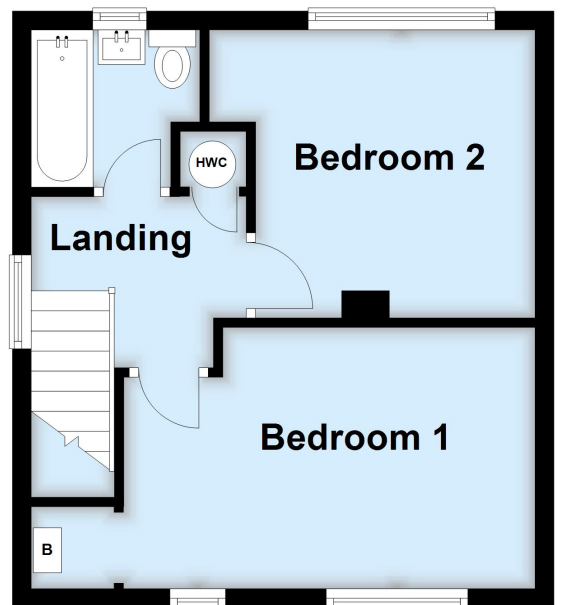
## Ground Floor

Approx. 35.1 sq. metres (377.9 sq. feet)



## First Floor

Approx. 32.0 sq. metres (344.8 sq. feet)



Total area: approx. 67.1 sq. metres (722.7 sq. feet)

This plan is for general layout guidance and may not be to scale.  
Plan produced using PlanUp.