



- Three Bedroom House
- Cul-de-sac Position Within Silver End
- Semi Detached
- Ground Floor Bedroom With En Suite Shower Room
- Generous Driveway
- Gas Central Heating & UPVC Windows
- Unoverlooked Secluded Rear Garden
- Good Range Of Village Amenities

## 151 Broadway, Silver End, Witham, Essex. CM8 3XN.

Michaels Property Consultants are delighted to present to the market this rather unique two bedroom semi detached house, occupying an excellent Cul-de-sac position within the popular and well-served village of Silver End. New to the market and offered for sale with a complete onward chain, this well established and versatile property offers bedrooms on both the first floor and the ground floor, representing an ideal purchase for a variety prospective buyers.



# Property Details.

## Ground Floor

### Entrance Hall

### Kitchen



11' 1" x 6' 0" (3.38m x 1.83m)

### Lounge



14' 5" x 11' 11" (4.39m x 3.63m)

### Conservatory



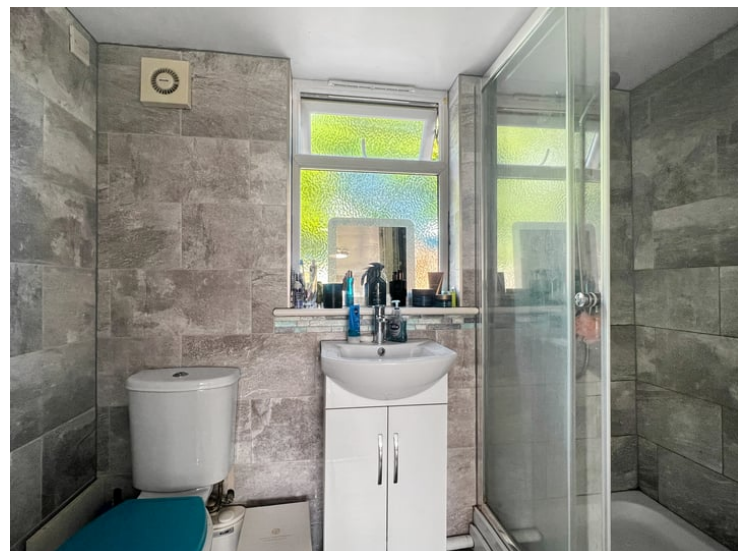
8' 0" x 6' 3" (2.44m x 1.91m)

### Dining Room/Third Bedroom



14' 2" x 7' 11" (4.32m x 2.41m)

### En Suite Shower Room



# Property Details.

## First Floor

### Bedroom One



12' 0" x 9' 1" (3.66m x 2.77m)

### Bedroom Two

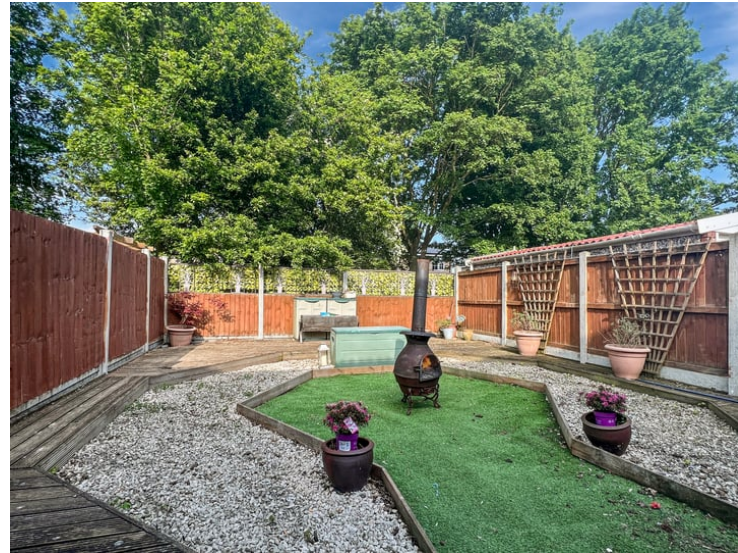


12' 0" x 9' 1" (3.66m x 2.77m)

### Family Bathroom

## Outside

### Rear Garden



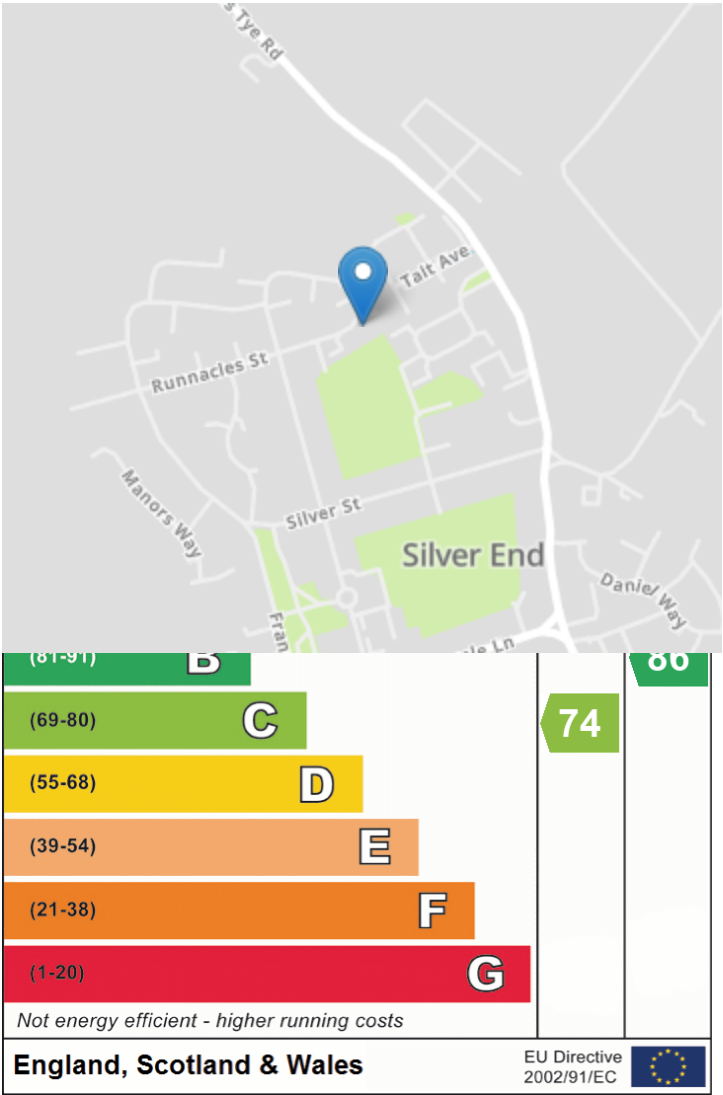
### Driveway To The Front Of The Dwelling

# Property Details.

## Floorplans



## Location



We have not carried out a structural survey and the services, appliances and specific fittings have not been tested. All photographs, measurements, floor plans and distances referred to are given as a guide only and should not be relied upon for the purchase of carpets or any other fixtures or fittings. Gardens, roof terraces, balconies and communal gardens as well as tenure and lease details cannot have their accuracy guaranteed for intending purchasers. Lease details, service ground rent (where applicable) are given as a guide only and should be checked and confirmed by your solicitor prior to exchange of contracts.