

£250,000 Leasehold

Foundry Court, Mill Street, Slough SL2 5FZ



- Second Floor (building has a lift)
- Balcony
- Parking Space
- Approx. 724 Sqft Gross Internal Area
- Open Plan Kitchen/Reception Room
- Minutes from Slough Station

## GENERAL DESCRIPTION

This well-proportioned flat is on the second floor and has a twenty-three-foot, open-plan kitchen/reception room with double doors that lead out onto a balcony overlooking the communal courtyard. The bedrooms are both good-sized doubles, there is some useful built-in storage in the hallway and a bathroom with decorative mosaic tiles. Foundry Court is in an exceptionally convenient location, just minutes from Slough Railway Station (for Elizabeth Line and GWR services) and only a short walk from the shopping centres and numerous stores on the High Street. The property comes with use of a parking space plus access to the communal cycle store.

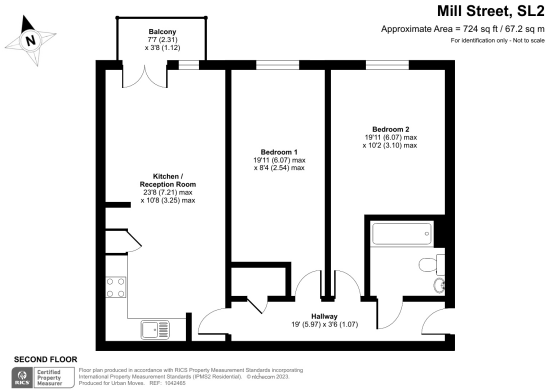
**Tenure:** Leasehold (125 years from 2008).

**Service Charge:** £198.85 per month (subject to annual review).

**Council Tax:** Band C, Slough Borough Council.

**Please Note:** This property is currently part-owned by A2Dominion Housing Association but is offered as a 100% open-market sale. Upon completion, the full leasehold title would transfer to the buyer.

This property is offered for sale in the condition seen. As a general rule, fitted domestic appliances are included in the sale; non-fitted appliances are not. If you require confirmation, you must request this in writing from Urban Moves. The information in this document supersedes any information given verbally either in person or by telephone. Pets not permitted (except assistance animals).



## DIMENSIONS

### SECOND FLOOR

#### Entrance Hallway

19' 0" x 3' 6" (5.79m x 1.07m)

#### Reception

23' 8" max. x 10' 8" max. (7.21m x 3.25m)

#### Balcony

7' 7" x 3' 8" (2.31m x 1.12m)

#### Kitchen

included in reception measurement

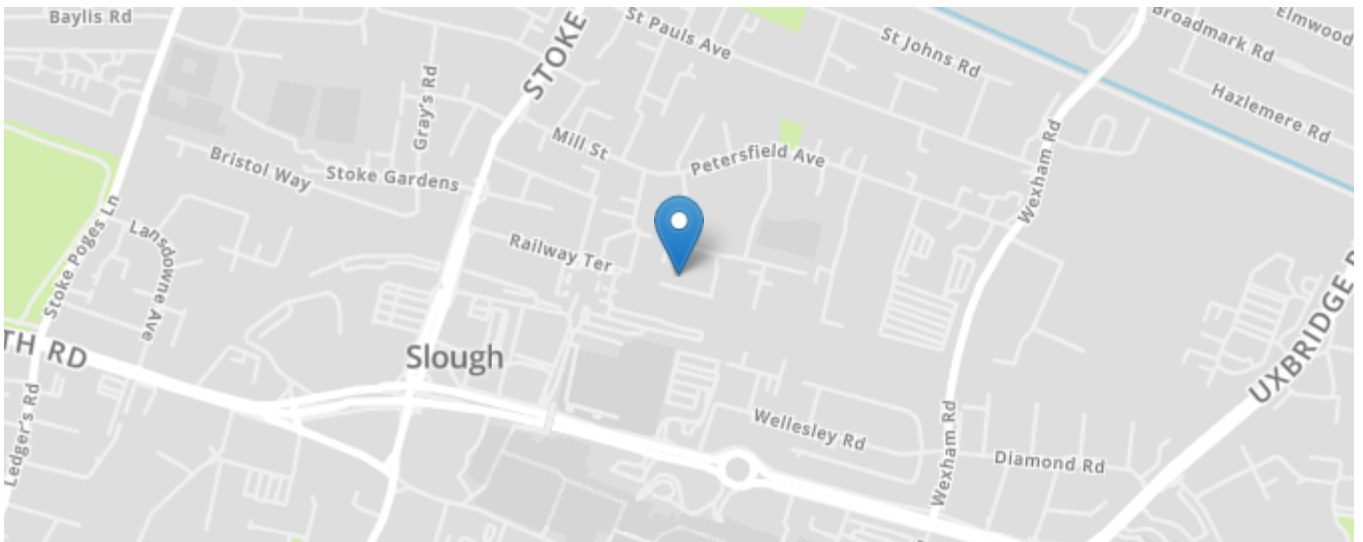
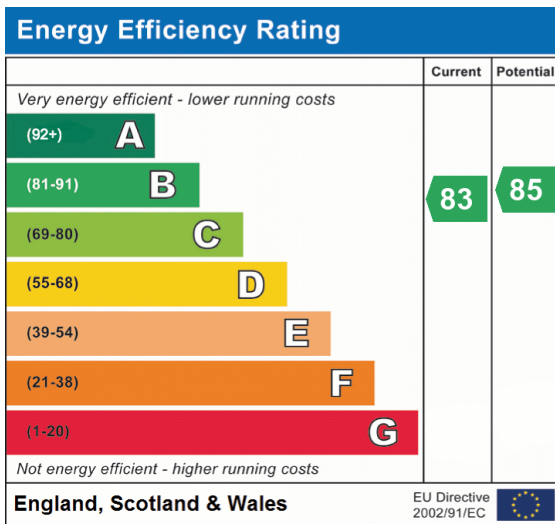
#### Bedroom 1

19' 11" max. x 8' 4" max. (6.07m x 2.54m)

#### Bedroom 2

19' 11" max. x 10' 2" max. (6.07m x 3.10m)

#### Bathroom



All content shown is to be used as a general guideline for the property. None of the contents of this document constitute part of an offer or contract. All measurements, photographs, floor-plans and data provided are only a guideline and should not be relied upon.