

46 Holbrook Way, Bromley, Kent, BR2 8EE

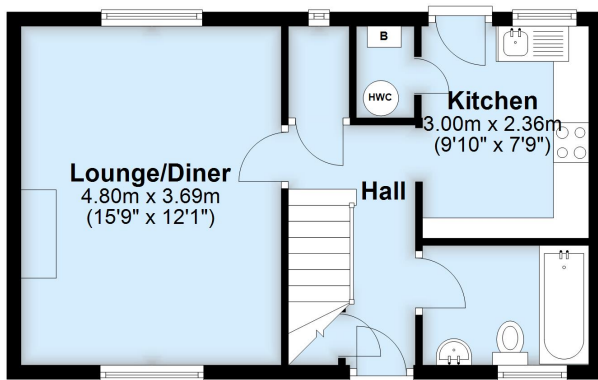
Property Images





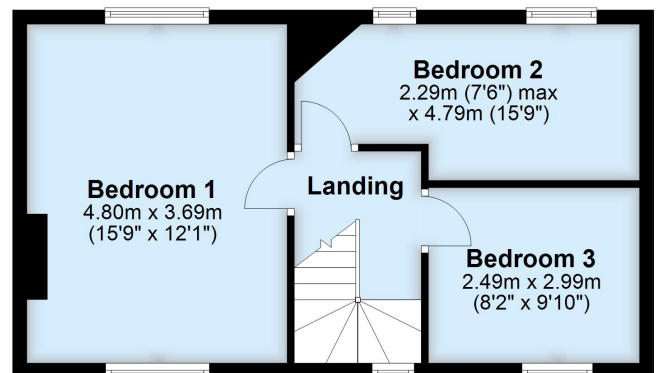
Ground Floor

Approx. 38.6 sq. metres (415.4 sq. feet)



First Floor

Approx. 41.6 sq. metres (448.2 sq. feet)



Total area: approx. 80.2 sq. metres (863.6 sq. feet)

This plan is for general layout guidance and may not be to scale.
Plan produced using PlanUp.