

FOR SALE

£219,500 Leasehold



WOODHOUSE
PROPERTY CONSULTANTS

**16 Friends Avenue, Cheshunt,
Hertfordshire. EN8 8LX**

ABOUT THE PROPERTY

Woodhouse are pleased to offer for sale with NO CHAIN this modern apartment in a desirable development on Friends Avenue. Situated on the 1st Floor, this 1-bed apartment also benefits from allocated parking and communal gardens.

There are currently tenants in situ, and they are happy to either continue staying in the property or vacating if requested - thus making this apartment ideal for wither a First-Time Buyer or Investor.

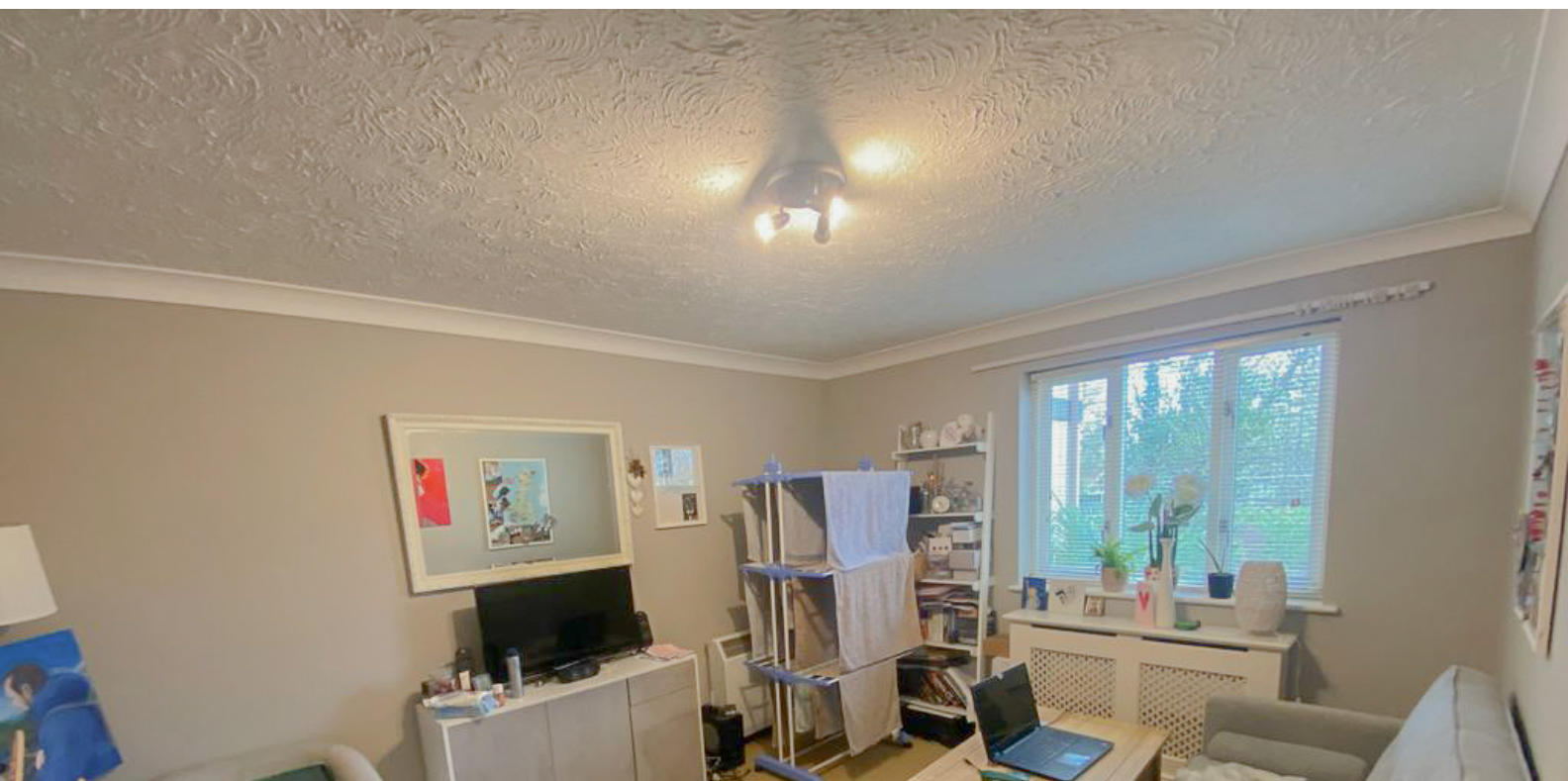
Friends Avenue is conveniently located to the amenities of the Old Pond, as well as walking distance to both Cheshunt & Theobalds Grove train stations with their direct links to London. The amenities of Brookfield Shopping Centre and Pavilions Shopping Centre are nearby as well as the A10 / M25.

Contact Woodhouse today to come and see for yourself what this apartment has to offer for you!

Long lease of 969 years. Peppercorn Ground Rent. Service charge approx £80 per month, please call for further details.

FEATURES

- No chain
- 1 Bedroom
- Allocated Parking
- Modern Apartment
- 1st Floor
- Communal Gardens
- Fantastic amenities & transport links nearby
- Ideal for either a First-Time Buyer or Investor
- 969 year lease
- Peppercorn Ground Rent
- Contact Woodhouse today

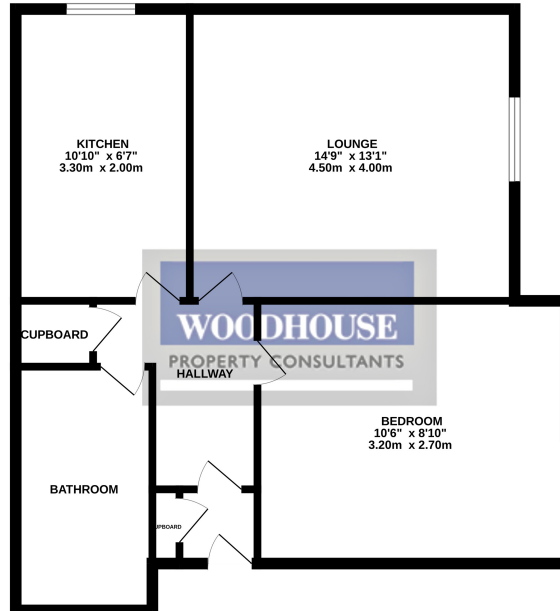


ROOM DESCRIPTIONS



FLOORPLAN

GROUND FLOOR



Whilst every attempt has been made to ensure the accuracy of the floorplan contained herein, measurements of doors, windows, rooms and any other items are approximate and no responsibility is taken for any error, omission or mis-statement. This plan is for illustrative purposes only and should be used as such by any prospective purchaser. The services, systems and appliances shown have not been tested and no guarantee as to their operability or efficiency can be given.
Made with Metagor ©2023

EPC

