



91 Carlton Avenue, Feltham, Greater London, TW14 0EJ

SPACIOUS THREE BEDROOM SEMI-DETACHED PROPERTY IN SOUGHT AFTER LOCATION OFFERING GREAT SCOPE FOR EXTENSION (S.T.R.P.P). The property benefits from a spacious lounge, separate dining room, modern fitted kitchen, three well proportioned bedrooms, bathroom and extensive rear garden. Viewings Highly Recommended!

ROOM DESCRIPTIONS

Entrance Porch

With double glazed sliding door. Partly glazed door to:

Entrance Hall

Front aspect double glazed window, light and power points, radiator, understairs storage cupboard housing meters and fuseboard, stairs to first floor.

Lounge



Rear aspect double glazed window, light and power points, radiator, TV point.

Dining Room



Front aspect double glazed window, light and power points, radiator.

Kitchen



Side aspect double glazed window, range of fitted units at eye and base level, roll edged worktops, sink drainer unit, space for washing machine, fridge/freezer and cooker. Partly tiled walls, rear aspect double glazed door to Garden.

First Floor

Landing

Side aspect double glazed window, cupboard housing boiler, light point, access to loft space.

Bedroom 1



Rear aspect double glazed window, light and power points, radiator, built-in wardrobes.

ROOM DESCRIPTIONS

Bedroom 2



Front aspect double glazed window, light and power points, radiator, range of built-in wardrobes.

Bedroom 3

Front aspect double glazed window, light and power points, radiator.

Bathroom

Rear aspect double glazed frosted window, panel enclosed bath, low level W.C, radiator, tiled walls, light point.

Outside

Front Garden

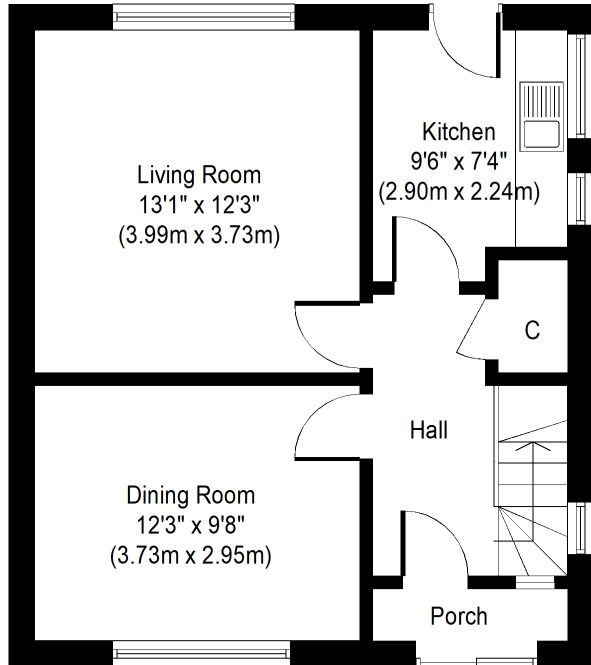
With pathway leading to front door.

Rear Garden

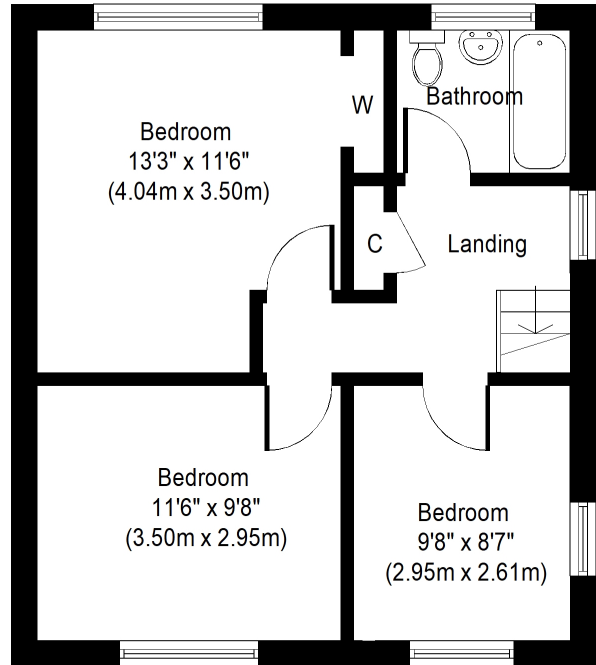


Patio area nearest to property, mainly laid to lawn with shrub borders, enclosed by wood-panel fencing, brick-built storage sheds, gated side access to front.

FLOORPLAN



Ground Floor
Approximate Floor Area
489.7 Sq. ft.
(45.5 Sq. m.)



First Floor
Approximate Floor Area
473.4 Sq. ft.
(44.0 Sq. m.)

Whilst every attempt has been made to ensure the accuracy of the floor plan contained here, measurements of doors, windows, rooms and any other items are approximate and no responsibility is taken for any error, omission, or mis-statement. The measurements should not be relied upon for valuation, transaction and/or funding purposes. This plan is for illustrative purposes only and should be used as such by any prospective purchaser or tenant. The services, systems and appliances shown have not been tested and no guarantee as to their operability or efficiency can be given.

Copyright V360 Ltd 2023 | www.houseviz.com