



Elmside Walk

Hitchin | Hertfordshire | SG5 1HB

www.stonegate-estates.co.uk



ELMSIDE WALK

Property Description

A rare opportunity to acquire this well-presented assisted living second floor one bedroom retirement apartment situated within the sought after Archers Court development close to the centre of Hitchin.

Surrounded by attractive, well maintained gardens and offering a reassuring combination of retirement living together with a dedicated care team available round the clock, the apartment offers a fully fitted kitchen with a washer/dryer, a wet room, fitted wardrobes to the bedroom and overlooks playing fields to the rear.

Set within walking distance of the town centre, a church, health centre and a supermarket.

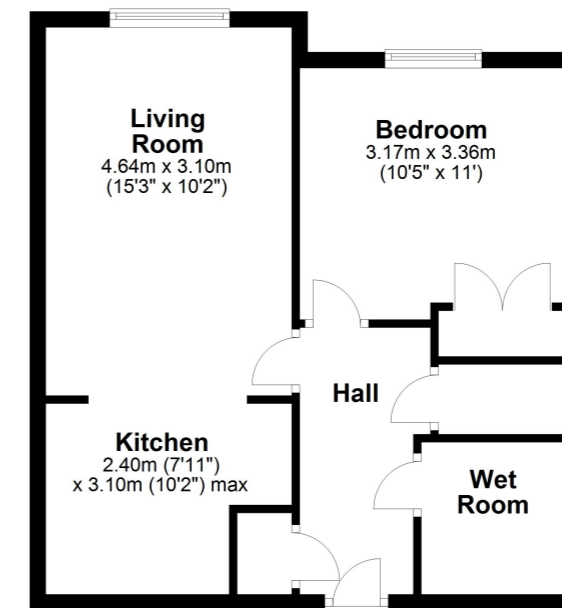
Hitchin town provides a broad range of shops and a regular traditional market, together with a good selection of restaurants, bars and pubs within its historic centre. The town also provides a swimming centre, theatres and a library, whilst the commuter is served by the main line railway station (Kings Cross - 30 minutes) and direct links to the A1(M).

£275,000 Leasehold





Floor Plan



All measurements shown are approximate and for guidance only. Garages and workshops are not included in any gross floor areas unless integral to the main building where they will be included.
Plan produced using PlanUp.



- Assisted Living
- Retirement Apartment
- 24 Hour Assistance
- Residents Lounge
- Communal Gardens
- Views over Fields
- Wet Room
- Good Condition Throughout

EPC Rating:

Stonegate Estate Agents

01462 438979

sales@stonegate-estates.co.uk | www.stonegate-estates.co.uk

