

**FOR SALE**



## Letchworth Road, Stanmore, Greater London HA7

\*\*\* SIMPLY STUNNING \*\*\*

Mischa & Co are proud to offer this ground floor 1 double bedroom apartment within the sought-after Stanmore Place development, which offers stylish and contemporary living space and stunning landscaped gardens with water features.

The property briefly comprises of a large open-plan kitchen/reception room, a master bedroom, a family bathroom, plenty of storage and 113 year lease. Situated within close range of shops and Canons Park Underground Station (Jubilee line).

Currently being sold chain free.

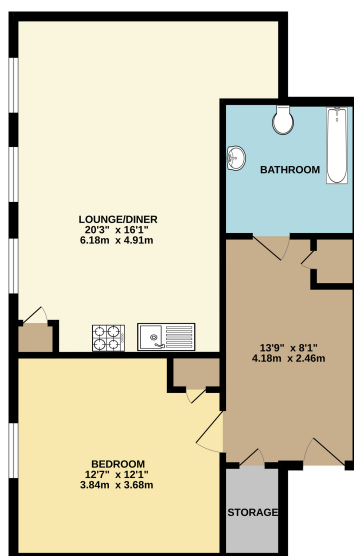
Council Tax Band D (Harrow) & EPC rating C (79).

## Offers in Excess Of £299,950 Leasehold

4 North Parade, Mollison Way, Edgware, HA8 5QH  
E: [info@mischaandco.com](mailto:info@mischaandco.com) T: 0208 951 5000

## Floorplan

GROUND FLOOR  
644 sq.ft. (59.8 sq.m.) approx.



TOTAL FLOOR AREA: 644 sq ft (59.8 sq m.) approx.  
Whilst every attempt has been made to ensure the accuracy of the floorplan contained here, measurements of areas, volumes, rooms and any other items are approximate and not intended to be taken as any offer, invitation or statement. This plan is for illustrative purposes only and should be used as such by any prospective purchaser. The services, appliances and equipment shown have not been tested and no guarantee as to their condition or efficiency can be given.  
Made with Metagame C0205

NB: Please note that all fittings, kitchen appliances and heating systems have not been tested by Mishca & Co Sales & Lettings. Whilst we endeavour to make our sales details accurate and reliable. Room sizes should not be relied upon for carpets and furnishings. If there is any point, which is of particular important to you, please contact our office and we will be pleased to verify any information for you. Do so particularly if contemplating travelling some distance to view this property.