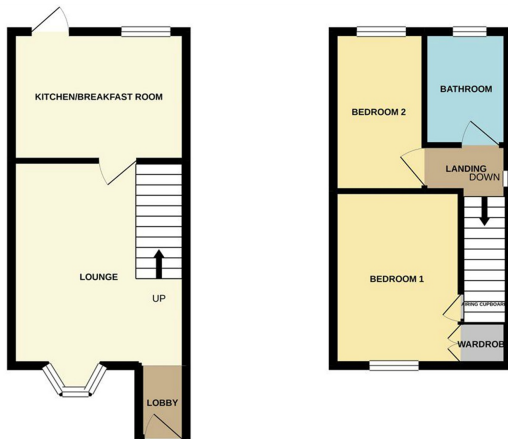




**Uldale Way, Gunthorpe, Peterborough PE4 7GE**

**£200,000**



\*\*\* NO ONWARD CHAIN \*\*\* " Located in a cul de sac location, this 2 bedroom semi detached home is ideal for first time buyers! Featuring a driveway, entrance, living room, kitchen/breakfast, 2 bedrooms with a built in wardrobe in bedroom one and a bathroom. The home is well presented throughout. Council Tax Band - A / EPC Energy Rating - D "



### ENTRANCE HALL

UPVC double glazed door to front, open to :-

### LOUNGE

13' 8" x 11' 8" (4.17m x 3.56m) (approx.) UPVC window to front, two radiators and stairs to 1st floor.

### KITCHEN / BREAKFAST ROOM

11' 8" x 8' 7" (3.56m x 2.62m) (approx.) Fitted with a range of base and eye level units with work surfaces over, stainless steel sink unit with mixer tap over, space for a cooker, integrated fridge and dishwasher, plumbing for a washing machine and wall mounted boiler. UPVC double glazed window to rear, UPVC double glazed door to garden.

### FIRST FLOOR LANDING

### BEDROOM ONE

11' 8" x 8' 5" (3.56m x 2.57m) (approx.) UPVC double glazed window to front, built in wardrobe and radiator

### BEDROOM TWO

10' 7" x 6' (3.23m x 1.83m) (approx.) UPVC double glazed window to rear and radiator.

### BATHROOM

Fitted with a three piece suite comprising of low level W/C, pedestal wash and basin, bath with mixer shower over, heated towel rail and tiled flooring. UPVC double glazed window to rear.

### AGENT NOTES

The floorplan is for illustrative purposes only. Fixtures and fittings do not represent the current state of the property. Not to scale and is meant as a guide only.

