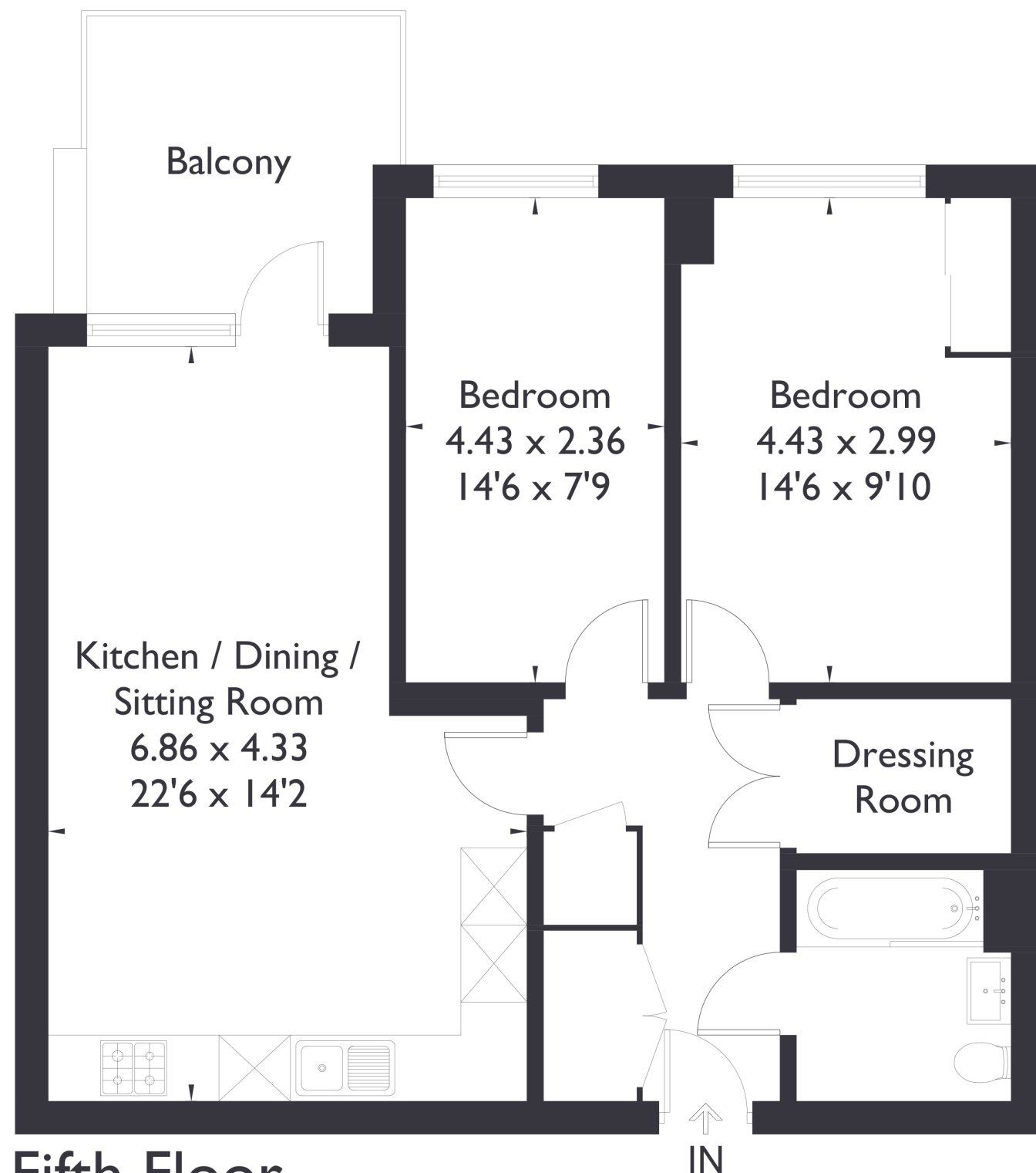


Copley Close, W7

Approximate Floor Area = 67.5 sq m / 726 sq ft



Fifth Floor



2 BEDROOM FLAT

Copley Close, W7

£460,000

Welcome to this beautifully presented two bedroom, one bathroom apartment located in the heart of Hanwell.

Offering two spacious double bedrooms and a stylish open-plan kitchen/living area with fully integrated appliances, the home opens out onto a sun-filled, south-facing balcony—perfect for relaxing or entertaining.

FEATURES

- Two Bedrooms
- One Bathroom
- Open Plan Kitchen/ Living
- Castle Bar Park Station
- Private Balcony And Communal Garden
- On Street Parking
- EPC Rating B



2 BEDROOM FLAT

Copley Close, W7 £460,000

Finished to a high standard throughout, this apartment combines modern design with comfortable living.

Ideally situated just moments from Castle Bar Park Station, you'll benefit from quick connections to West Ealing (Elizabeth Line) in one direction and Perivale in the other. The property also falls within the catchment area for Brentside High School and Hobbayne Primary School, making it a great option for families and professionals alike.

EPC Rating B.

