



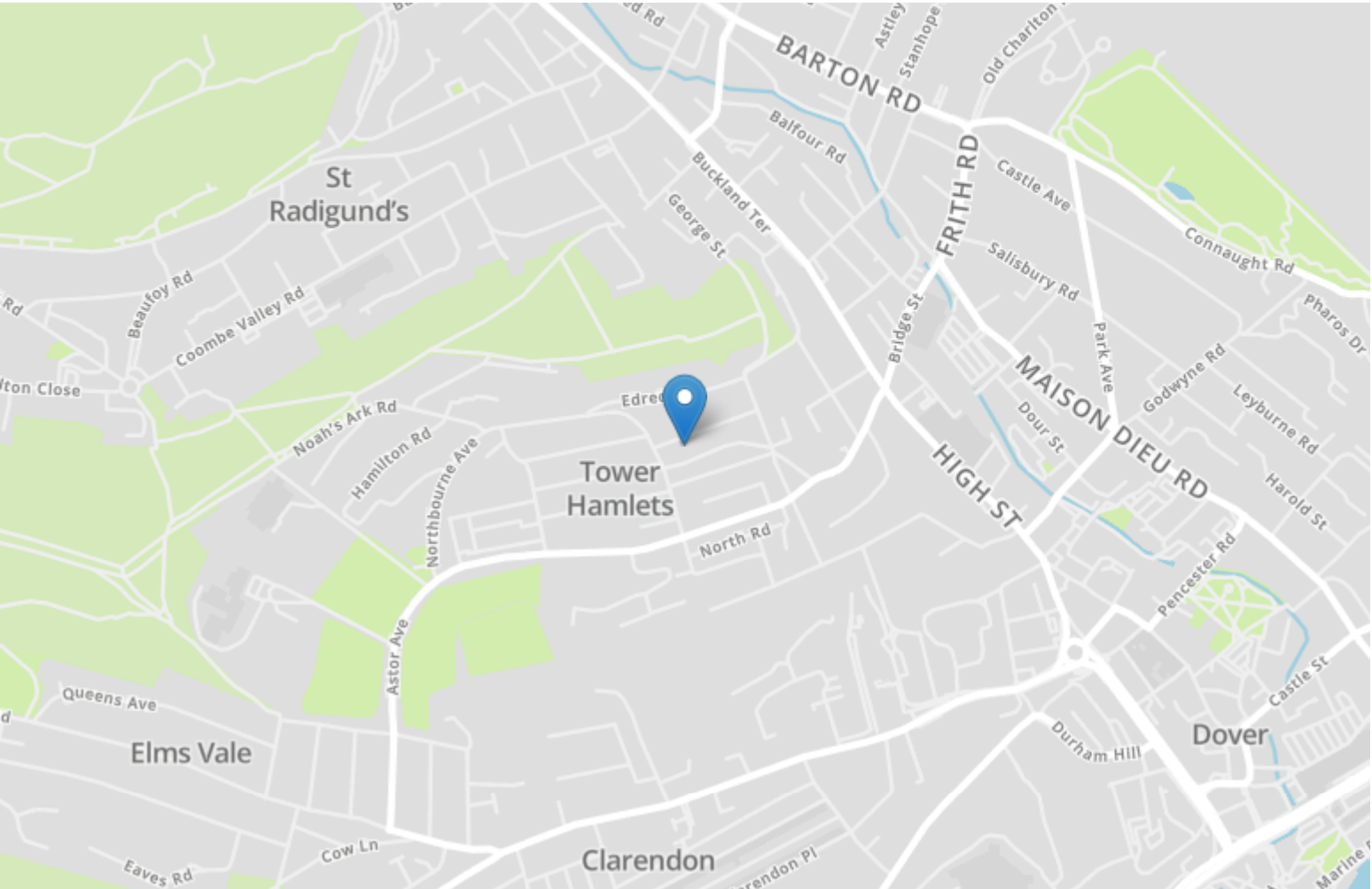
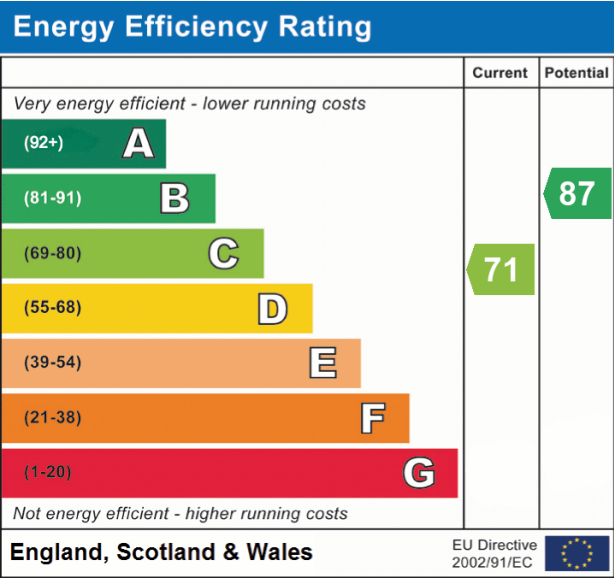
Burnap + Abel
The Charlton Centre High St
Dover
CT16 1TT

Email Dover@burnapandabel.co.uk
Phone 01304 279107
<https://www.burnapandabel.co.uk/>



Burnap + Abel
The Charlton Centre High St
Dover
CT16 1TT

Email Dover@burnapandabel.co.uk
Phone 01304 279107
<https://www.burnapandabel.co.uk/>



61 Odo Road

Dover
CT17 0DW

£190,000 FREEHOLD

Draft Details...FOR SALE THROUGH BURNAP + ABEL...Price Range £190,000 - £200,000 | Set across three well-designed floors, this fabulous three/four-bedroom home offers a wealth of space and flexibility, making it a superb opportunity for first-time buyers, growing families, or buy-to-let investors. The property is presented chain free and boasts three/four generously sized bedrooms, a well-appointed bathroom, two toilets, a comfortable lounge, and a practical kitchen. To the rear, a sunny garden provides the perfect spot for relaxation or entertaining, with plenty of scope to create your own outdoor retreat. With the added benefits of double glazing and gas central heating, this home combines everyday comfort with long-term potential. Situated within close proximity to local schools, shops, and amenities, it strikes the perfect balance between convenience and lifestyle. Whether you're taking your first step on the property ladder, seeking more space for family life, or looking for a smart investment, this is a home not to be missed. For your chance to view call Burnap + Abel on 01304 279107.



<https://www.burnapandabel.co.uk/>

Bedroom Two

11' 0" x 10' 6" (3.35m x 3.20m)

Bedroom Three

11' 2" x 8' 5" (3.40m x 2.57m)

Lower Ground

Lounge

10' 11" x 10' 5" (3.33m x 3.17m)

Kitchen

10' 11" x 8' 4" (3.33m x 2.54m)

Bathroom

7' 8" x 5' 5" (2.34m x 1.65m)

Bedroom One

14' 0" x 11' 0" (4.27m x 3.35m)

Bedroom Four

8' 10" x 7' 10" (2.69m x 2.39m)

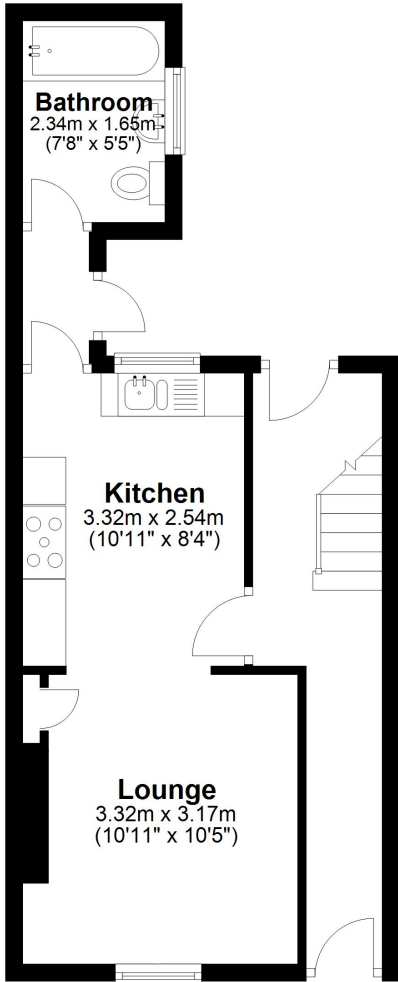
W.C.

Garden

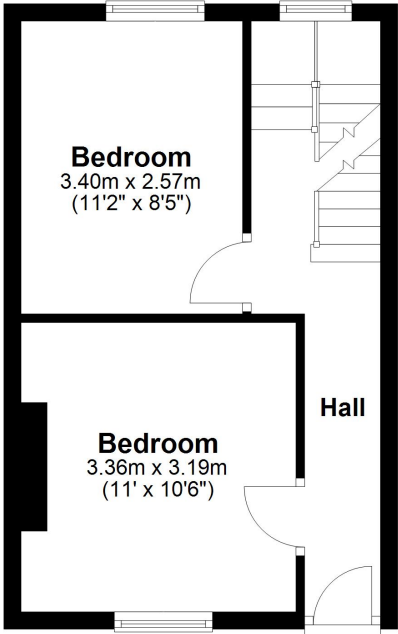
Area Information

Located in a popular suburb of Dover and just a short walk into town and the high speed train station which will have you in London, St Pancras in just over an hour. Dover is perhaps best known for its towering White Cliffs & Dover Castle, but the historic port and surrounding areas have a lot more to offer than simply the natural formation, from historical sites to seaside eateries to boat trips. A good selection of well regarded schools are within close proximity including the Dover Grammar Schools and Duke of York's Royal Military School.

Lower Ground Floor
Approx. 33.3 sq. metres (358.6 sq. feet)



Ground Floor
Approx. 28.5 sq. metres (307.2 sq. feet)



First Floor
Approx. 29.3 sq. metres (315.4 sq. feet)

