





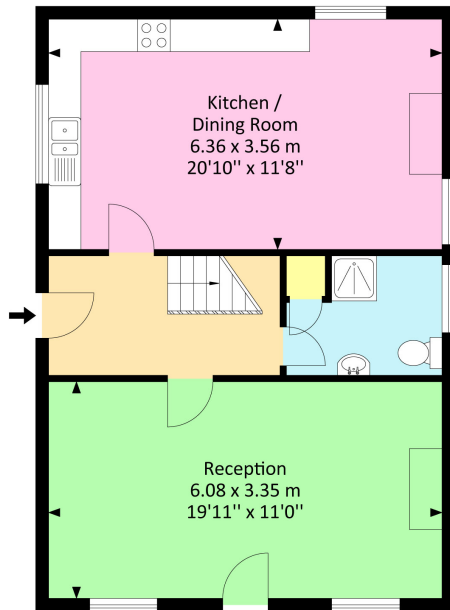
Changeways, Passage Road, Aust, South Gloucestershire, BS354BG

Internal Area (Approx)

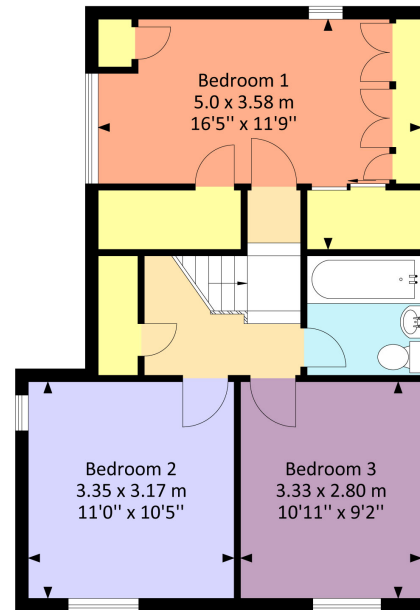
104.10 Sq.M / 1120.20 Sq.Ft

For identification only. Not to scale.

Produced by Energy Plus



Ground Floor



First Floor



# Changeways, Passage Road, Aust, South Gloucestershire BS35 4BG

A charming and practical home in the village of Aust, located on the road leading to the old ferry. Ideal for country walks yet close to Bristol and convenient for the M48 and The Prince of Wales Bridge. This chocolate box cottage offers versatility and endless potential to modernise and extend (subject to planning) although fully liveable. Positioned on an elevated plot with a generous wrap around garden with the villages of Olveston and Alveston and all the amenities they have to offer just a stones throw away along with Chepstow and the market town of Thornbury. The accommodation comprises a welcoming lounge featuring an open stone fireplace, perfect for cosy evenings and spacious kitchen/diner with charming wood burner, dual aspect views, and a range of fitted wall and base units. A ground floor shower room provides added convenience. Upstairs, the principal bedroom benefits from fitted wardrobes, whilst two further double bedrooms offer flexible accommodation. A modern family bathroom completes the first-floor layout. Externally the property boasts a gated driveway with parking for two vehicles, and the substantial gardens provide ample space for landscaping ready to enjoy in the summer months or possible extension. This lovely family home offers an exciting blank canvas for buyers with vision and creativity, early viewing is recommended!

## Situation

The village of Aust lies to the south of the M48 & the Severn Bridge, with a convenient motorway junction right on the doorstep connecting to the M4 & M5 at Almondsbury. Historically the lane through the village led to the ferry across the River Severn, immortalised in the famous picture of Bob Dylan waiting for the "Severn Princess" in 1966. The village has a fine old pub, The Boar's Head and an ancient church. The neighbouring village of Olveston has a range of shops and a popular primary school. The nearest secondary school is Marlwood at Alveston - [www.marlwood.co.uk](http://www.marlwood.co.uk) - 4 miles to the east, in the direction of the market town of Thornbury.

## Property Highlights, Accommodation & Services

- Detached Three Bedroom Country Cottage With Wrap Around Gardens
- Three Double Bedrooms
- Generous Living Room With Stone Open Fireplace And Double Windows
- Spacious Kitchen/Diner With Wood Burning Stove And A Dual Aspect
- Ground Floor Shower Room With W/C
- Principal Bedroom With Numerous Built-in Wardrobes And A Dual Aspect
- Modern Fitted Family Bathroom
- Gated Driveway and Parking
- Corner Plot Location
- No Chain!

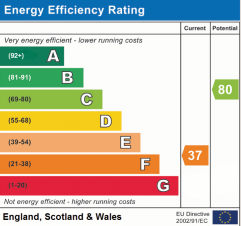
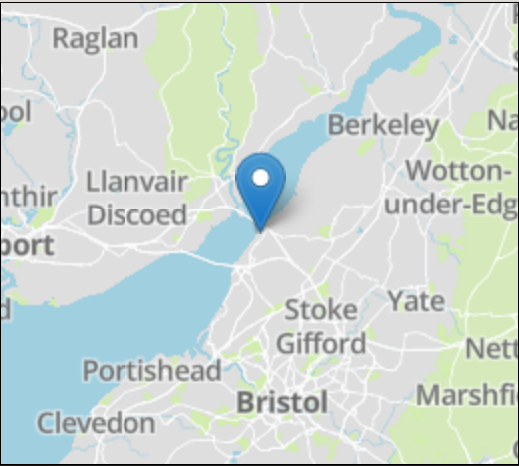
## Directions

From the roundabout at Aust Services take the A403 southwards. The first turning right is onto Passage Road. Follow the lane a short distance and 'Changeways' is the first property on your right.

## Local Authority & Council Tax -

**Tenure** - Freehold

**Contact & Viewing** - Email: [mil\\_thornburysales@milburys.co.uk](mailto:mil_thornburysales@milburys.co.uk) Tel: 01454 417336



IMPORTANT NOTICE Milburys Estate Agents Ltd, their clients and any joint agents give notice that they have not tested any apparatus, equipment, fixtures, fittings, heating systems, drains or services and so cannot verify they are in working order or fit for their purpose. Interested parties are advised to obtain verification from their surveyor or relevant contractor. Statements pertaining to tenure are also given in good faith and should be verified by your legal representative. Digital images may, on occasion, include the use of a wide angle lens. Please ask if you have any queries about any of the images shown, prior to viewing. Where provided, floor plans are shown purely as an indication of layout. They are not scale drawings and should not be treated as such. Complete listings and full details of all our properties (both for sale and to let) are available at [www.milburys.co.uk](http://www.milburys.co.uk)





