

FOR
SALE



Fernside Kingswood Road, Kington, Hereford HR5 3HE

£450,000 - Freehold

22, Broad Street, Hereford, HR4 9AP 01432 355455 hereford@flintandcook.co.uk

PROPERTY SUMMARY

Situated on the outskirts of the popular market town of Kington is this fantastic four bedroom detached bungalow offering ideal family/ retirement accommodation and being sold with the added benefit of no onward chain. Offering fantastic countryside views, a good sized garden, garage & carport, ample driveway parking and comprising of four double bedrooms with versatility of use, two toilets and separate shower room, two receptions and kitchen/breakfast room. The property also benefits from solar panels and air source heating. We highly recommend a viewing.

POINTS OF INTEREST

- *Fantastic countryside views*
- *Four double bedrooms, three toilets*
- *Garage, carport, ample parking & garden*
- *Air source heating & solar panels*
- *No onward chain!*
- *Perfect for a family or retirement*



ROOM DESCRIPTIONS

Ground floor

With entrance door leading into the

Entrance porch/utility space

With wood effect flooring, storage cupboards, space for coat and shoe storage, space and plumbing for washing machine, two double glazed windows, radiator and doors to

W/C

With low flush w/c, wash hand basin with tiled splash back, radiator and double glazed windows.

Kitchen/breakfast room

With fitted base units, ample work surface space over, stainless steel 1 1/2 bowl sink and drainer unit, under counter space for larder fridge, built in pantry, freestanding electric cooker with extractor over, wall mounted fuse box, two radiator, double glazed window and doors to

Dining room

With wood effect flooring, coving, ceiling light point, radiator, double glazed window with fantastic views and door leading into the

Living room

With wood effect flooring, two radiators, two ceiling light points, coving, door out to the inner hallway and two double glazed windows with fantastic views.

Inner hallway

With wood effect flooring, central heating thermostat, loft hatch, two ceiling light points, loft hatch, door to the rear garden and doors leading to

Bedroom one

With fitted carpet, ceiling light point, radiator, dual aspect double glazed windows with fitted blinds.

Bedroom two

With fitted carpet, ceiling light point, radiator, dual aspect double glazed windows with fitted blinds.

Bedroom three

With fitted carpet, radiator, double glazed window with fitted blind and ceiling light point.

Bedroom four/ reception room

With wood effect flooring, ceiling light point, radiator and double glazed window with fantastic countryside views.

Toilet

With low flush w/c, wash hand basin, double glazed window, tiled floor and surround.

Shower room

Large walk in shower cubicle with electric waterfall shower head over. low flush w/c.

Outside

The property is approached across a large tarmac driveway providing off road parking for many vehicles with access to the open carport and single garage with up and over door and personal door. Both have light and power. There are three wooden storage shed and a plastic storage container. There is access onto the good sized lawned garden which is mostly laid to lawn enclosed by a mix of hedging and fencing, a mature oak tree and an array of ornamental plants and shrubbery with fantastic countryside views towards hergest ridge.

Services

Mains water, electricity and drainage are connected. Telephone (subject to transfer regulations).

Air source heat pump & solar panels.

Outgoings-

Council tax band E - £2,993 for 2025/2026

Water and drainage rates are payable.

Viewings-

Strictly by appointment through the Agent, Flint & Cook, Hereford (01432) 355455.

Opening Hours

Monday - Friday 9.00 am - 5.30 pm

Saturday 9.00 am - 1.00 pm

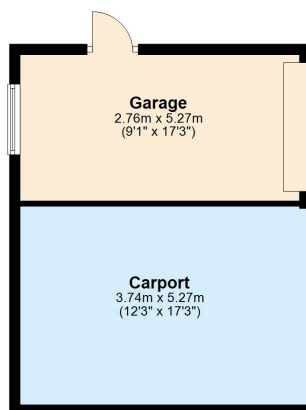
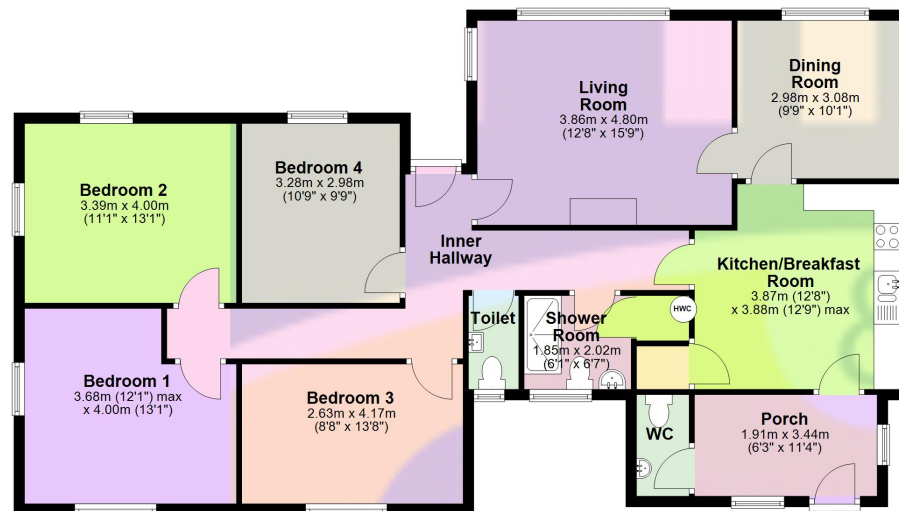
Money Laundering Regulations-

Prospective purchasers will be asked to produce identification, address verification and proof of funds at the time of making an offer.

Directions

From Kington town centre, proceed out of the town heading over the bridge towards the petrol station and take the right hand turning up Kingswood Road, the property is situated a short distance up on the right hand side as indicated by the agents for sale board.

Ground Floor
Approx. 158.4 sq. metres (1704.8 sq. feet)



Total area: approx. 158.4 sq. metres (1704.8 sq. feet)



These particulars are prepared for the guidance only of prospective purchasers. They are intended to give a fair and overall description of the property and do not constitute the whole or any part of an offer or contract. Any information contained herein (whether in text, plans or photographs) is given in good faith but should not be relied upon as being a statement or representation of fact. Any plans provided by the agents and/or with the sales particulars are intended for guidance purposes only; we cannot guarantee the accuracy and scale of any plans, and they do not form any part of the sales contract. Nothing in these particulars shall be deemed to be a statement that the property is in good condition or otherwise nor that any services or facilities are in good working order. Any movable contents, fixtures and fittings, (whether wired or not) referred to in these property particulars (including any shown in the photographs) are, unless the particulars say otherwise, excluded from the sale. In the event that the buyer proposes to purchase any movable contents or include them in any offer for the property, the buyer cannot in any respect imply any such inclusion from the property particulars. Any areas, measurements or distances referred to herein are approximate only and may be subject to amendment. It should not be assumed that the property has all necessary planning, building regulation or other consents and these matters must be verified by an intending purchaser. The information in these particulars is given without responsibility on the part of the agents or their clients and neither the agents nor their employees have any authority to make or give any representations or warranties whatever in relation to this property.

Flint & Cook Privacy Statement: We take your privacy very seriously. Your data will not be shared with any other parties without your express permission. Our Data protection Policy can be read in full on the Flint & Cook website, www.flintandcook.co.uk

Energy Efficiency Rating			
	Current	Potential	
Very energy efficient - lower running costs			
(92+)	A	85	
(81-91)	B		
(69-80)	C		
(55-68)	D		
(39-54)	E		
(21-38)	F		
(1-20)	G	100	
Not energy efficient - higher running costs			
England, Scotland & Wales			
EU Directive 2002/91/EC			