



BarrettMove



16 Redshots Close, Marlow, Buckinghamshire SL7 3LW
Offers in Excess of £950,000 - Freehold



PROPERTY SUMMARY

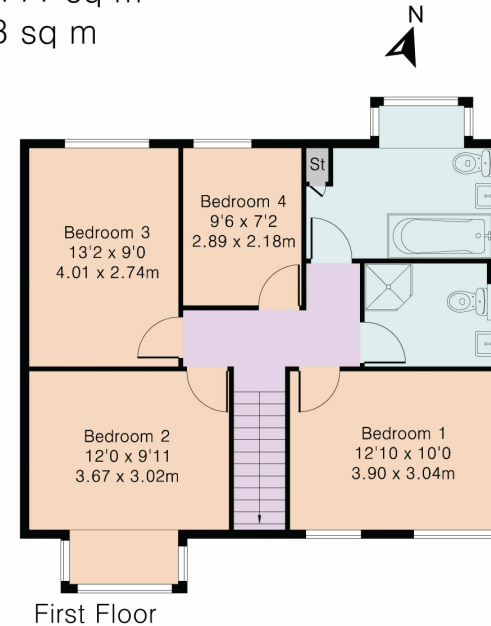
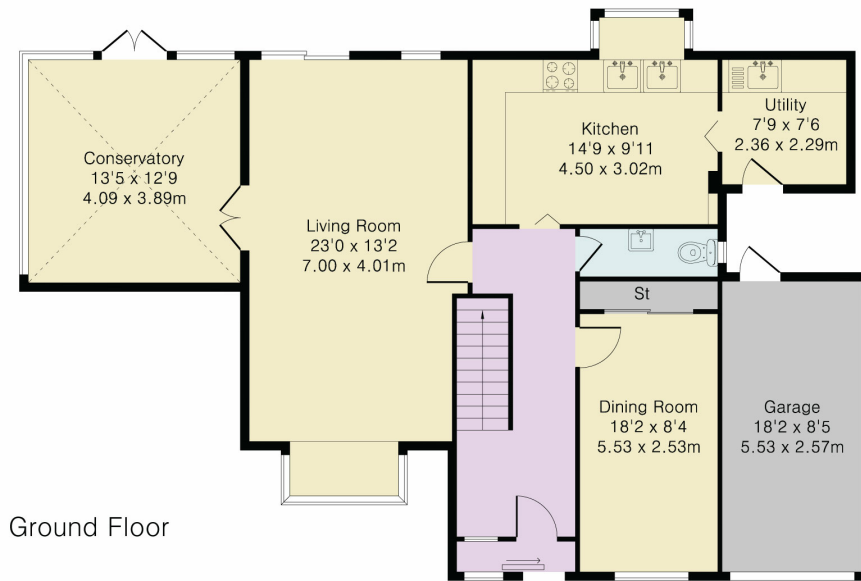
Barrett Move is pleased to market this unique four bedroom detached house offering views over Marlow to the front and over open fields to the rear, such a special plot is rarely available.

POINTS OF INTEREST

- Ideal family home on a generous plot
- Beautiful secluded garden with multiple entertaining areas
- Original parquet floors
- Utility room
- Garage and off road parking for 4/5 cars
- Interconnected timber workshops with electrics
- Conservatory
- Raised location giving views front and back
- Ideal for family life
- In catchment for excellent primary and secondary schools
- Short walk to shops/post office, GP surgery and schools
- 15/20 mins walk to Marlow High Street



Approximate Gross Internal Area 1875 sq ft – 174 sq m
 Ground Floor Area 1193 sq ft – 111 sq m
 First Floor Area 682 sq ft – 63 sq m



Although Pink Plan Ltd ensures the highest level of accuracy, measurements of doors, windows and rooms are approximate and no responsibility is taken for error, omission or misstatement. These plans are for representation purposes only as defined by RICS code of measuring practise. No guarantee is given on total square footage of the property within this plan. The figure icon is for initial guidance only and should not be relied on as a basis of valuation.



Energy Efficiency Rating		Current	Potential
<i>Very energy efficient - lower running costs</i>			
(92+)	A		84
(81-91)	B		
(69-80)	C	70	
(55-68)	D		
(39-54)	E		
(21-38)	F		
(1-20)	G		
<i>Not energy efficient - higher running costs</i>			
England, Scotland & Wales			EU Directive 2002/91/EC