

Madeira Court, Knightstone Road, Weston-Super-Mare,
Somerset. BS23 2BH

£150,000 Leasehold

FOR SALE



www.housefox.co.uk



01934 314242
01275 404601
01278 557700
sales@housefox.co.uk

PROPERTY DESCRIPTION

HOUSE FOX ESTATE AGENTS PRESENTS.... A purpose built first floor apartment set on Weston super Mare sea front, and only a stones throw to the promenade, beach, cafes, restaurants and bars.

The apartment is for over 55's only, and has a real community spirit with several communal lounges for coffee mornings, and playing games over a drink, plus on the very top is a wonderful lounge area with sea views and a large communal sun terrace. There is also communal gardens, plus parking for several vehicles on a first come first served basis

The apartment is accessed via a lift or stairs, and once inside comprises hallway with cupboards, lounge, small sun room, 2 bedrooms, kitchen, shower room, electric heating, double glazing, and this apartment has its own private sun terrace that would easily accommodate 6-10 people for barbecues or alfresco dining.

If your looking for an apartment for an elderly relative, for peace of mind their is a residential manager and emergency pull cords for assistance

FEATURES

- WALK THROUGH 360 VIDEO TOUR AVAILABLE
- Apartment for over 55's
- Set on the sea front
- 2 bedrooms
- Own private sun terrace
- Lounge with opening to the kitchen
- Several communal lounge areas
- Residential manager
- Large communal terrace area with sea views
- EPC-tbc



ROOM DESCRIPTIONS

Communal front door

Entry phone system

Communal hallway:

Lift or stairs to all floors, door to the apartment

Hallway:

Cupboards, one housing the hot water tank

Living room:

4m x 3.69m (13' 1" x 12' 1") Double glazed windows, electric heater, opening to the kitchen, sliding door to the sun room

Sun room:

2.77m x 1.01m (9' 1" x 3' 4") Door to the sun terrace, double glazed windows

Sun terrace:

7.39m MAX x 4.54m MAX (24' 3" x 14' 11") A lovely private area, perfect for chilling out, or entertaining family or friends

Kitchen:

3.19m x 1.76m (10' 6" x 5' 9") Sink unit, floor and wall units, oven and hob, double glazed window,

Bedroom 1:

2.96m x 2.68m (9' 9" x 8' 10") Electric heater, double glazed window, wardrobe

Bedroom 2:

2.98m x 2.44m (9' 9" x 8' 0") Electric heater, double glazed window

Shower room:

Shower cubicle, wash hand basin, low level WC, heated towel rail

Communal rooms:

You have 3 communal rooms, for meeting family, other residents, or to chill out and enjoy the sunshine

Parking:

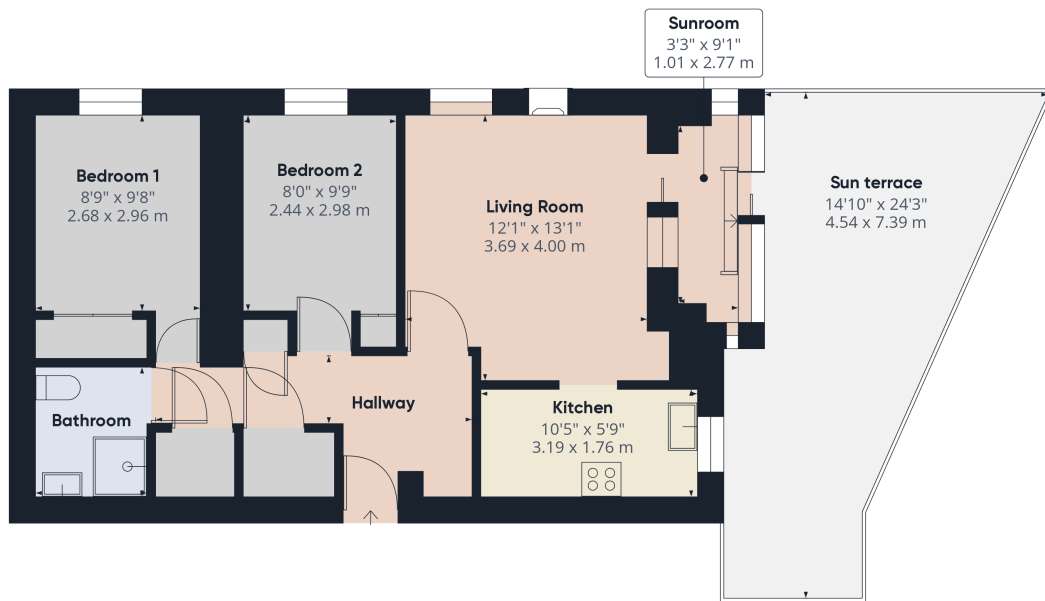
Is a first come first served basis

IMPORTANT NOTE

Pictures 16 onwards are of the communal areas on the property portals



FLOORPLAN & EPC



Approximate total area⁽¹⁾
607.58 ft²
56.45 m²

(1) Excluding balconies and terraces

While every attempt has been made to ensure accuracy, all measurements are approximate, not to scale. This floor plan is for illustrative purposes only.

GIRAFFE360