

Guide Price From £435,000

Old Farm Avenue, Sidcup, Kent, DA15  
8AW

**Christopher  
Russell**  
PROPERTY SERVICES



AGENTS NOTES: No statement in these particulars is to be relied upon as representations of fact and purchasers should satisfy themselves by inspection, or otherwise, as to the accuracy of the statements contained herein. These details do not constitute any part of any offer or contract. Christopher Russell have not tested any equipment or heating system mentioned and purchasers are advised to satisfy themselves as to their working order. Great care is taken when measuring but measurements should not be relied upon for ordering carpets, equipment etc.

Christopher Russell LLP. Registered in Cardiff. Partnership No. OC329088

Christopher Russell Property Services

33 The Oval, Sidcup, Kent DA15 9ER • Tel: 020 8300 1234 Fax: 020 8300 6530 • sales@christopher-russell.co.uk



Guide Price From £435,000 to £450,000.

Stunning three double bedroom house, which has undergone a significant amount of improvements and has been heavily extended finished to an exceptionally high standard.

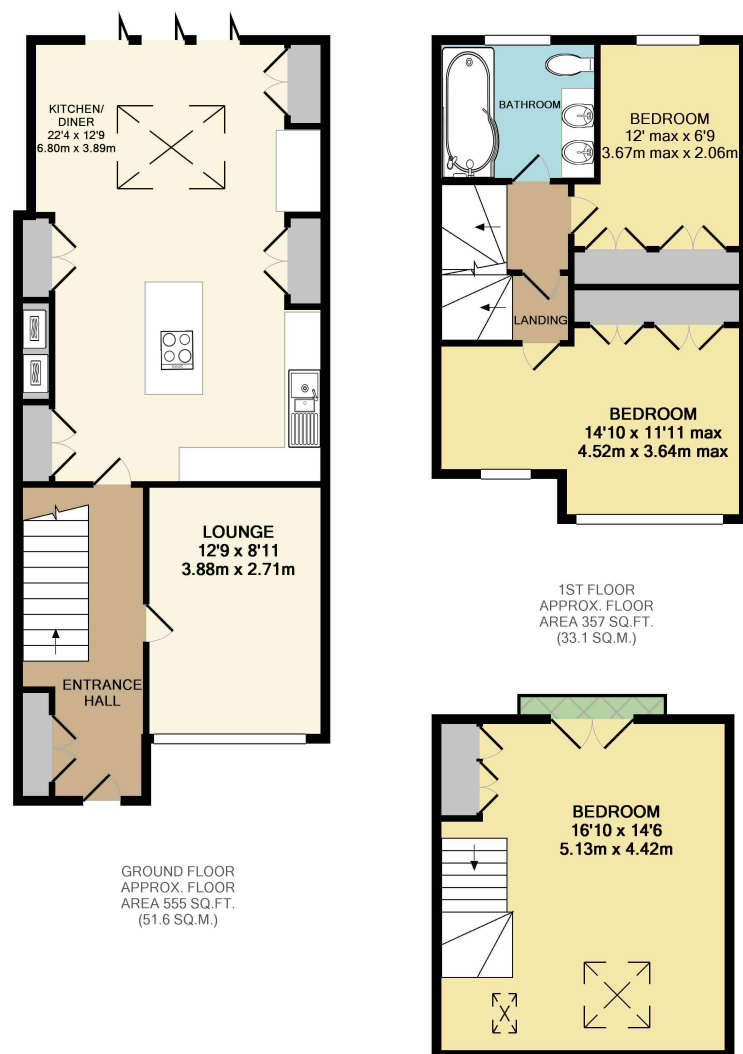
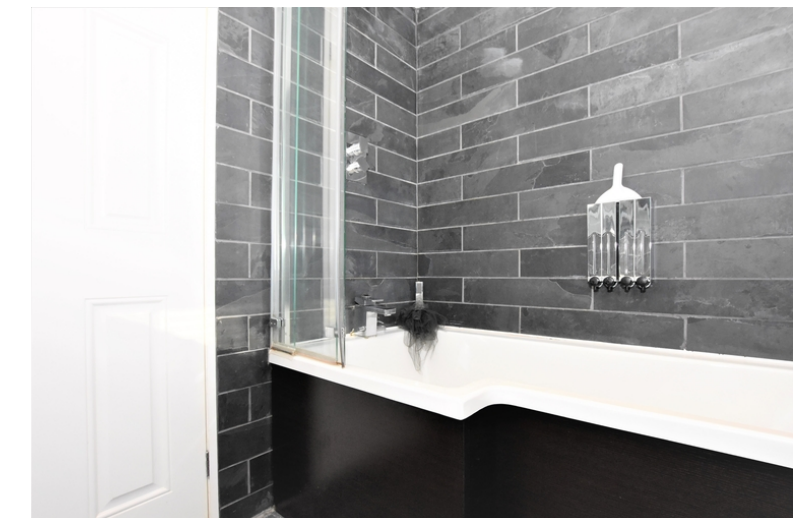
Situated a short walk to Sidcup train station local primary and grammar schools, this impressive property features three double bedrooms, beautifully finished luxury family bathroom suite, lounge, superb kitchen/family room and a landscaped rear garden.

This impressive property must be viewed to be fully appreciated. Fully modernised and extended the property features a kitchen/family room with a new fitted kitchen units, stone work surfaces and a range of fully integrated appliances. There are full length, full width doors leading out to a landscaped rear garden.

The first floor features two double bedrooms and a luxury bathroom suite, and a loft conversion featuring a master bedroom with a Juliet Balcony overlooking Old Farm Park.

Outside to the front is a new driveway providing off street parking for two cars. The landscaped rear garden extends approximately 80ft divided to feature a large patio with seating area to view a raised Koi Pond, pathway leading through to an artificially circled grassed area.

The detached garage has light and power and is accessed from a rear service road.



Whilst every attempt has been made to ensure the accuracy of the floor plan contained here, measurements of doors, windows, rooms and any other items are approximate and no responsibility is taken for any error, omission, or mis-statement. This plan is for illustrative purposes only and should be used as such by any prospective purchaser. The services, systems and appliances shown have not been tested and no guarantee as to their operability or efficiency can be given

Made with Metropix ©2019