

Flat 156 Pinnacle Apartments, 11 Saffron Central Square, Croydon, Surrey. CR0

£245,000

2GG Recently situated moments from the Whitgift and Centrale, this stunning one bedroomed apartment is located in the exclusive Saffron Square luxury development complex. Boasting a stylish interior with a high-specification finish and contemporary appeal, further benefits include a 24 hour concierge service, residents gym, library and business suite.

This property is leasehold and the lease is 999 years from 2012

The service charge is £3480 per annum approx (2023)

Viewing by appointment with 1st avenue.

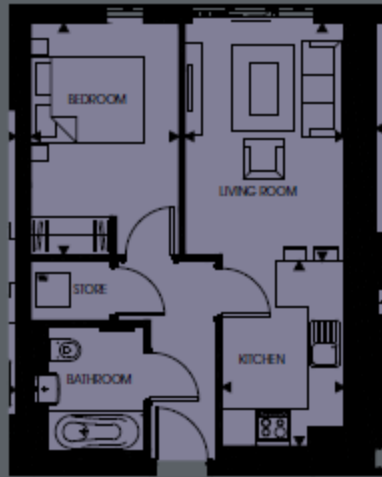
Call: 020 8293 8600

1st avenue, 128 Metcalfe Court, West Parkside, London SE10 0EL
email: info@1stavenue.co.uk



Flat 156 Pinnacle Apartments, 11 Saffron Central Square, Croydon, Surrey, CR0 2GG

£245,000



APARTMENT 05 / 1 BED	41.60 sq m	447 sq ft
Living Room	2.81m x 4.17m	9' 2" x 13' 8"
Kitchen	2.16m x 3.25m	7' 1" x 10' 7"
Bedroom	2.60m x 4.07m	8' 6" x 13' 4"

Viewing by appointment with 1st avenue.

Call: 020 8293 8600

1st avenue, 128 Metcalfe Court, West Parkside, London SE10 0EL
email: info@1stavenue.co.uk