

28 Tandridge Drive, Orpington, Kent, BR6 8BZ

Property Images



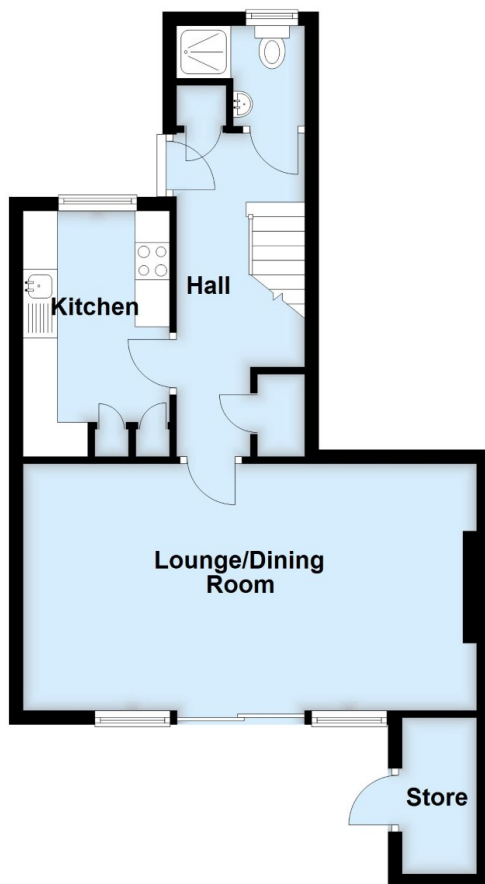






Ground Floor

Approx. 46.2 sq. metres (497.4 sq. feet)



First Floor

Approx. 40.5 sq. metres (436.4 sq. feet)



Total area: approx. 86.8 sq. metres (933.8 sq. feet)

This plan is for general layout guidance and may not be to scale.
Plan produced using PlanUp.