



Guide Price £575,000 Freehold



Bedonwell Road, Bexleyheath, Kent DA7
5PS



PROPERTY DESCRIPTION

GUIDE PRICE • £575,000 - £600,000 • RE/MAX SELECT are delighted to offer for sale this extended 1930s semi-detached house, on a popular residential road close to The Pantiles, Pickford Lane, and Nuxley Village amenities, and also transportation links including Bexleyheath station. This property comprises 4 bedrooms, through-lounge, fitted kitchen, utility room, conservatory, and upstairs family bathroom.

Further benefits include double glazing, gas central heating, garage, and 60ft (approx) garden.

Total Internal Area approx: 1,380.47 sq ft (128.25sq m).





ROOM DESCRIPTIONS

Ground Floor

Entrance Hall

Wood-effect flooring, radiator, understairs cupboards; stairs leading to first floor.

Through Lounge

7.88m x 3.60m (25' 10" x 11' 10") Wood flooring, radiators, feature fireplace, double glazed bay windows; doors leading to conservatory.

Kitchen / Breakfast Room

5.96m x 3.52m (19' 7" x 11' 7") Tiled flooring, tiled walls, radiator; range of wall and base units with complementary worktops; sink and drainer with mixer tap; breakfast bar, electric hob, built-in oven, integrated extractor hood, integrated dishwasher; space and connections for fridge/freezer; double glazed windows; door leading to utility room; door leading to conservatory.

Utility Room

3.30m x 2.03m (10' 10" x 6' 8") Space and connections for washing machine; space and connections for dryer; door leading to garage; door leading to garden.

First Floor

Landing

Double glazed window; access to loft.

Bedroom

3.62m x 3.38m (11' 11" x 11' 1") Carpeted, radiator, built-in wardrobes, double glazed windows.

Bedroom

3.64m x 3.60m (11' 11" x 11' 10") Carpeted, radiator, built-in wardrobes, double glazed windows.

Bedroom

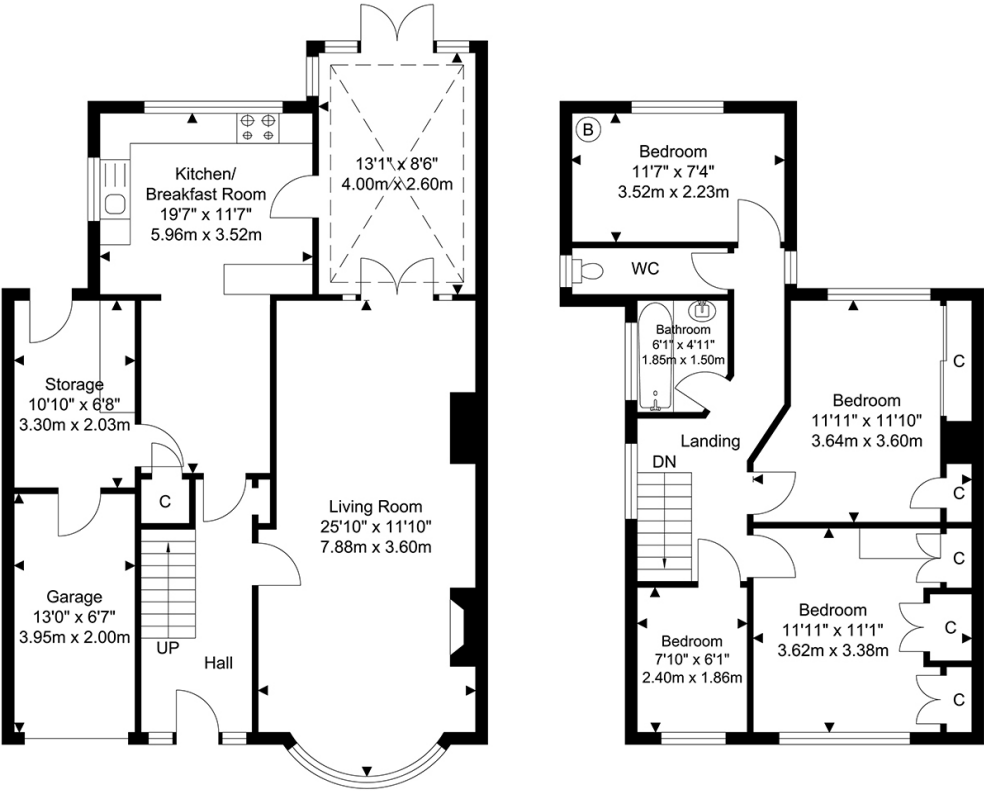
3.52m x 2.23m (11' 7" x 7' 4") Carpeted, radiator, double glazed windows.

Bedroom

2.40m x 1.86m (7' 10" x 6' 1") Carpeted, radiator, double glazed windows.



FLOORPLAN



Ground Floor
Approximate Floor Area
837.75 SQ.FT.
(77.83 SQ.M.)

First Floor
Approximate Floor Area
542.71 SQ.FT.
(50.42 SQ.M.)

TOTAL APPROX FLOOR AREA 1380.47 SQ.FT. (128.25 SQ. M.)
For Identification Purposes Only.

