

FOR SALE

Magnolia Road,
Strand on the Green, Chiswick, W4

Terraced House
Strand on the Green, Chiswick

£925,000 fh

3  1  2 

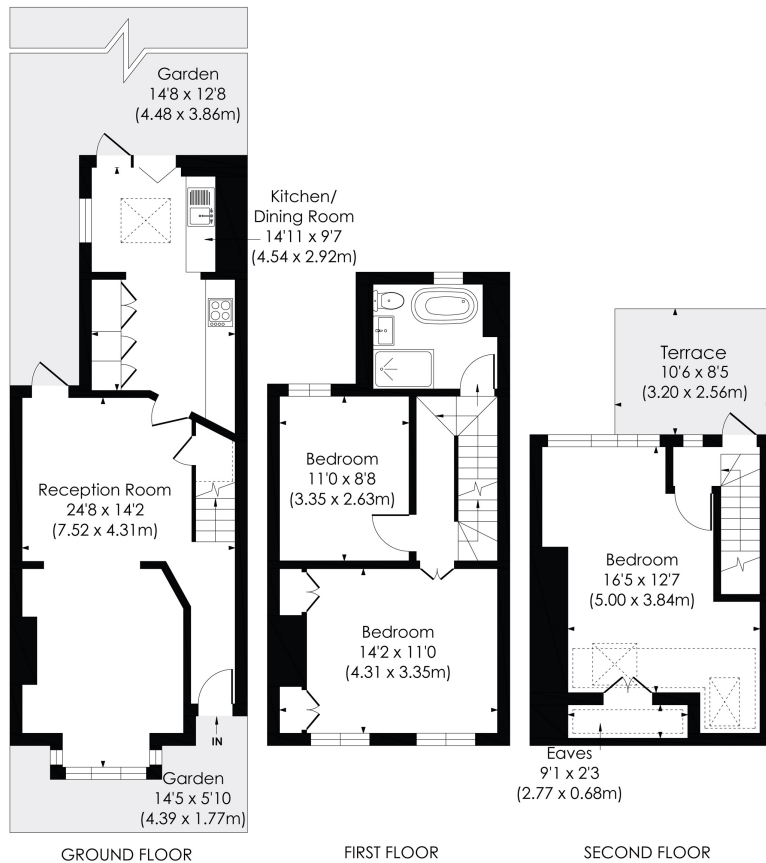


**horton
andgarton**

SALES / LETTINGS / PROPERTY MANAGEMENT

hortonandgarton.co.uk | Sales 020 3989 6464 | Lettings 020 3989 5454
161 Chiswick High Road, London, W4 2DT





MAGNOLIA ROAD, W4

Approx. Gross Internal Floor Area
1102 Sq'/102.42 SqM (Including Reduced Height)
1027 Sq'/95.41 SqM (Excluding Reduced Height)
 © Pixangle Property Marketing Ltd. info@pixangle.com Tel: 0208 870 2118

**horton
andgarton**

This floor plan has been prepared for the purpose of illustration only in accordance with the latest RICS code of measuring practice and is not to scale. All measurements and areas are approximate and whilst every effort has been made to ensure the accuracy of the plan contained here, no responsibility is taken for any error, omission or misstatement.



Freehold family house | Three bedrooms - Two bathrooms | 1102 Sq' - 102.42 SqM | Private west facing garden and roof terrace | EPC rating D | Strand on the Green



hortonandgarton.co.uk
 Sales 020 3989 6464
 Lettings 020 3989 5454

161 Chiswick High Road, London, W4 2DT