

Guide Price £475,000

Meadow View, Sidcup, Kent, DA15 9BL

**Christopher
Russell**
PROPERTY SERVICES



AGENTS NOTES: No statement in these particulars is to be relied upon as representations of fact and purchasers should satisfy themselves by inspection, or otherwise, as to the accuracy of the statements contained herein. These details do not constitute any part of any offer or contract. Christopher Russell have not tested any equipment or heating system mentioned and purchasers are advised to satisfy themselves as to their working order. Great care is taken when measuring but measurements should not be relied upon for ordering carpets, equipment etc.

Christopher Russell LLP. Registered in Cardiff. Partnership No. OC329088

Christopher Russell Property Services

33 The Oval, Sidcup, Kent DA15 9ER • Tel: 020 8300 1234 Fax: 020 8300 6530 • sales@christopher-russell.co.uk

Guide Price From £475,000 to £500,000

A round bay fronted three bedroom terrace house situated in a very popular location, a short walk to Sidcup train station, The Oval shopping facilities with its coffee shop, restaurants and Micro Brewery, Chatsworth infant, Burnt Oak and Holy Trinity Primary, Chislehurst and Sidcup and Bexley Grammar Schools.

Presented in excellent decorative condition this property features a modern fitted kitchen, modern bathroom suite gas central heating and double glazed windows, a retiled roof and has been recently rendered to the front and rear elevations.

The accommodation comprises, entrance porch, a hallway that has been open planned to a very spacious lounge and an open planned kitchen/dining room on the ground floor with three bedrooms and a family bathroom on the first floor.

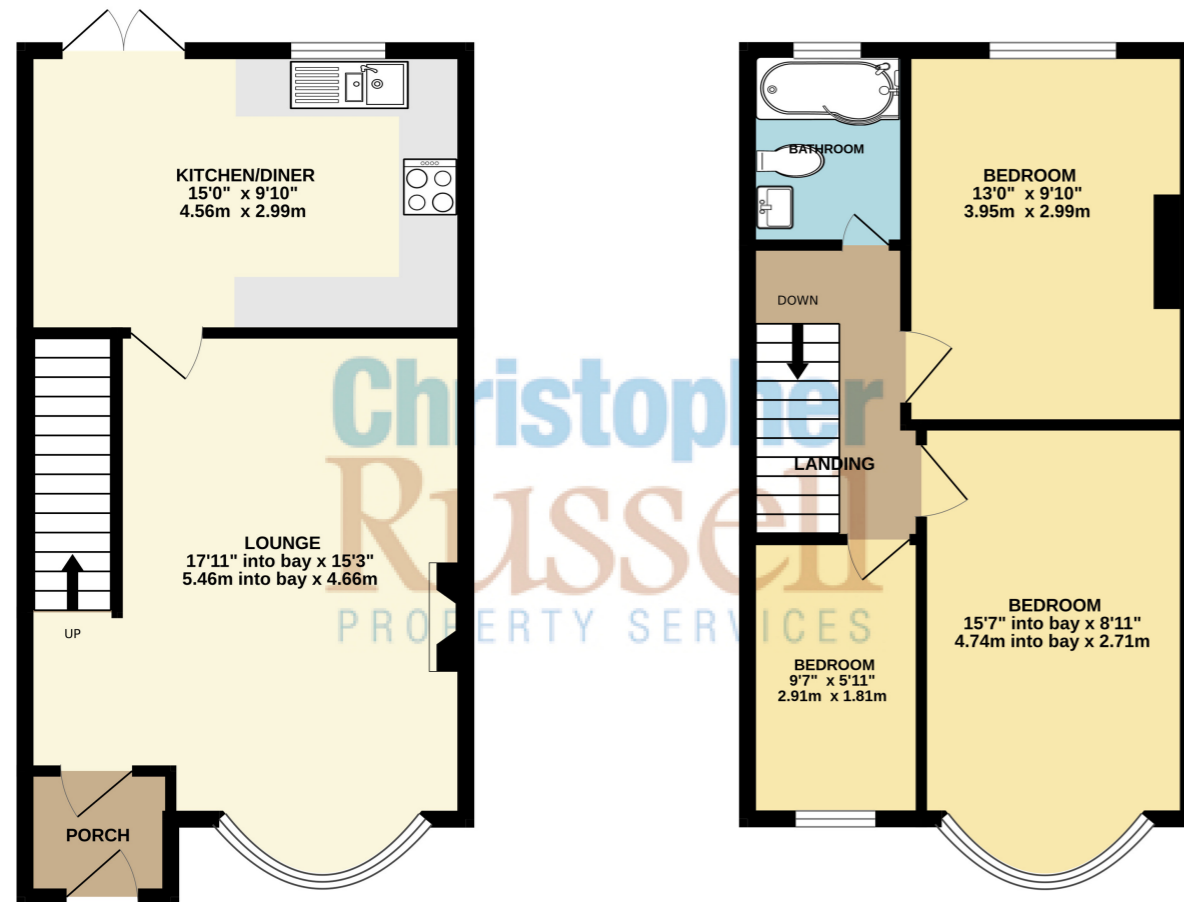
Outside there is a front driveway that provides off street parking and a rear garden that extends approximately 70ft with a brick built store at the end of the garden.

Council Tax Band D.



GROUND FLOOR
434 sq.ft. (40.3 sq.m.) approx.

1ST FLOOR
421 sq.ft. (39.1 sq.m.) approx.



Christopher
Russell
PROPERTY SERVICES

TOTAL FLOOR AREA : 855 sq.ft. (79.4 sq.m.) approx.
Whilst every attempt has been made to ensure the accuracy of the floorplan contained here, measurements of doors, windows, rooms and any other items are approximate and no responsibility is taken for any error, omission or mis-statement. This plan is for illustrative purposes only and should be used as such by any prospective purchaser. The services, systems and appliances shown have not been tested and no guarantee as to their operability or efficiency can be given.
Made with Metropix ©2024