

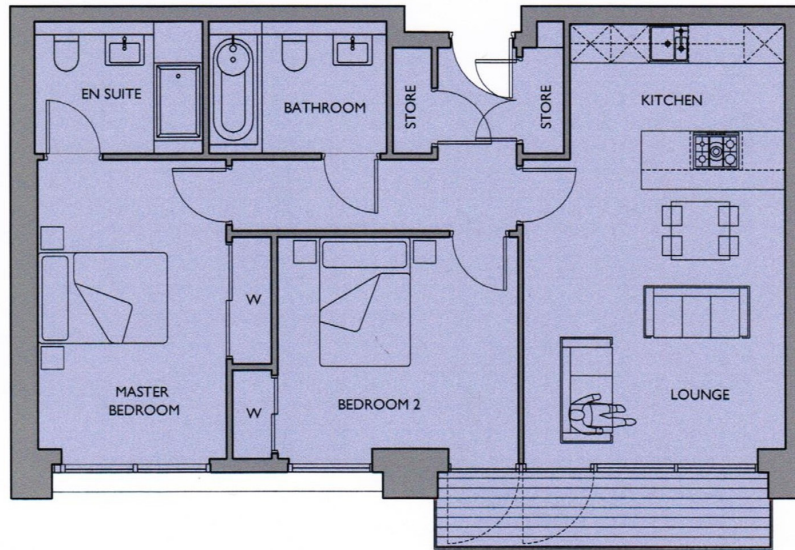


Fairfield Avenue, STAINES- UPON-THAMES, TW18 4DN

VERY WELL PRESENTED & SPACIOUS 2 BEDROOM, 2 BATHROOM APARTMENT IN SOUGHT AFTER DEVELOPMENT WITHIN MOMENTS OF HIGH STREET & MAINLINE TRAIN STATION. The property benefits from a spacious lounge/diner with private balcony, luxury fitted kitchen, two double bedrooms (en-suite to Bed 1), further luxury bathroom suite and 2 gated allocated parking bays. No Onward Chain. Viewings Highly Recommended!

ROOM DESCRIPTIONS

FLOORPLAN



127a, High Street, Staines-upon-Thames, TW18 4PD

01784 451458

staines@gregory-brown.co.uk