

25 Barge Walk, , London, SE10 0FP

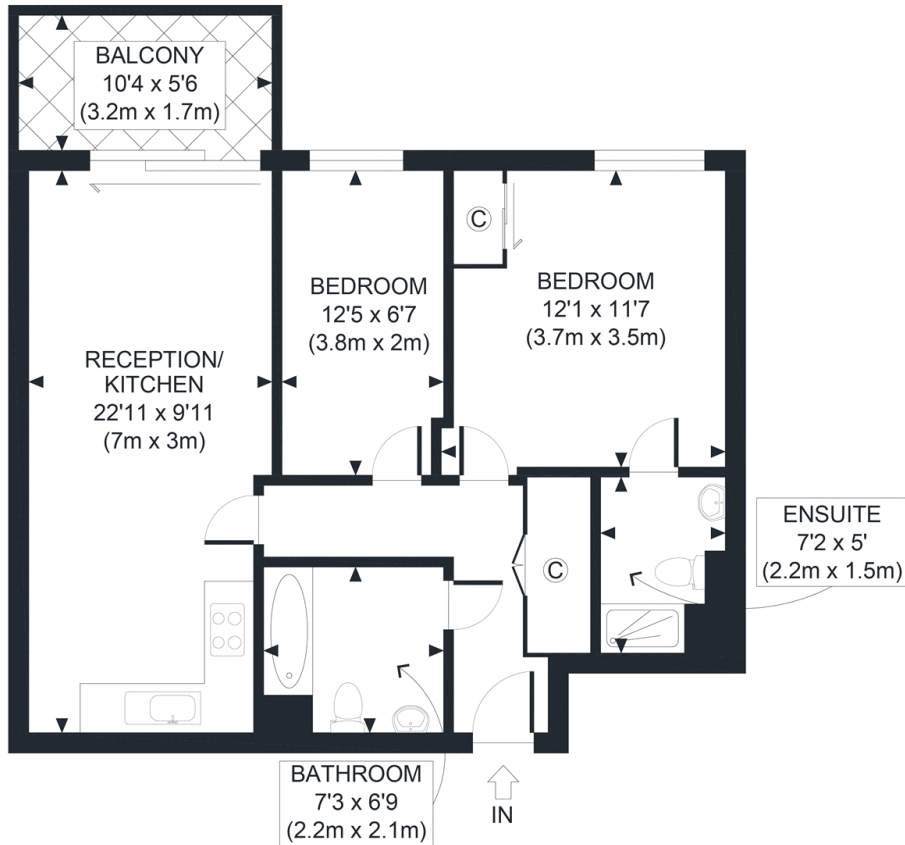
£1,600 PCM

Pay less upfront with a Zero Deposit Guarantee Boasting magnificent views of the Thames and Canary Wharf skyline, this stunning two bedroomed apartment offers a superb views, modern living space with high-specification fittings and concierge services. Comes unfurnished and located minutes from North Greenwich underground (ZONE 2). No parking available. This property comes unfurnished and is available from the 5th August.

Viewing by appointment with 1st avenue.

Call: 020 8293 8600

1st avenue, 128 Metcalfe Court, West Parkside, London SE10 0EL
email: info@1stavenue.co.uk



FIFTEENTH FLOOR
GROSS INTERNAL
FLOOR AREA 628 SQ FT

APPROX. GROSS INTERNAL FLOOR AREA 628 SQ FT / 58 SQM

Disclaimer: Floor plan measurements are approximate and are for illustrative purposes only. While we do not doubt the floor plan accuracy and completeness, you or your advisors should conduct a careful, independent investigation of the property in respect of monetary valuation

Copyright **photoplan360**

Viewing by appointment with 1st avenue.

Call: 020 8293 8600

1st avenue, 128 Metcalfe Court, West Parkside, London SE10 0EL
email: info@1stavenue.co.uk