



Ingleborough | Kirkby Lonsdale





4



5



2



 lunevalley
ESTATES.



EPC - B



Freehold



Nestled in the picturesque environs of Kirkby Lonsdale, residents of Ingleborough are privy to an array of local delights and attractions. This charming market town, steeped in rich history and natural beauty, offers a tapestry of quaint cafes, upscale boutiques, and traditional pubs that exude a welcoming ambiance. Meandering through the cobbled streets, one can discover the historic Ruskin's View, a renowned vantage point immortalised by the esteemed artist J.M.W. Turner, providing an enchanting panorama of the River Lune and the iconic Devil's Bridge.



For outdoor enthusiasts, the nearby Lake District and Yorkshire Dales National Parks offer an abundance of hiking trails, scenic landscapes, and opportunities for exploration, ensuring an idyllic retreat for those seeking to immerse themselves in the tranquility of nature. Kirkby Lonsdale presents a harmonious blend of historical allure and contemporary conveniences - an idyllic destination, seamlessly combining the charm of rural living with the vibrancy of modern amenities.



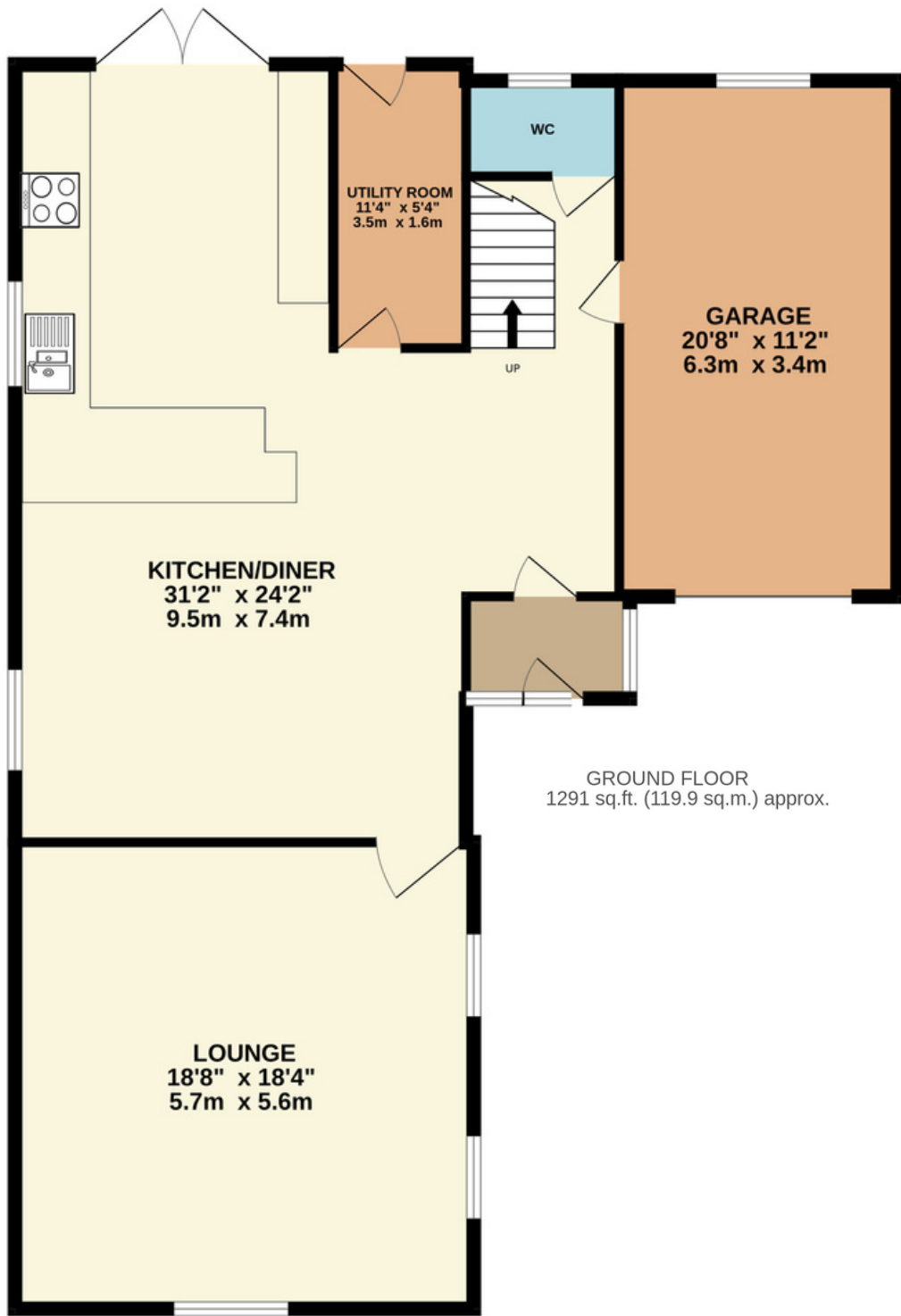
Upon entering, you are greeted by the cosy embrace of underfloor heating throughout, setting the tone for the refined indulgence that awaits. The ground floor reveals an inviting entrance hall accessed via the chic entrance vestibule, adorned with under stairs storage and a WC adorned in slate grey hues, complemented by a captivating wooden panel-style wall and a heated towel rail. Offering seamless convenience, the internal pedestrian access to the garage adds an element of practicality to this distinguished property.

To the right of the entrance hall, discover the open plan Kitchen/Diner, a culinary haven crafted by Mark James, adorned with sleek black and cream units, granite countertops, and integrated BOSCH appliances, culminating in a culinary masterpiece. The addition of a built-in breakfast bar sets the stage for delightful mornings. The space seamlessly flows to the rear garden, offering an idyllic escape through French doors which invite the outdoor serenity indoors. A separate Utility Room, adjoining the Kitchen, provides a seamless transition to the rear external area, ensuring both functionality and ease. The Lounge, accessed off the Kitchen/Diner, is a haven of tranquility, featuring a log effect gas fireplace which exudes warmth and comfort and is impeccably finished.

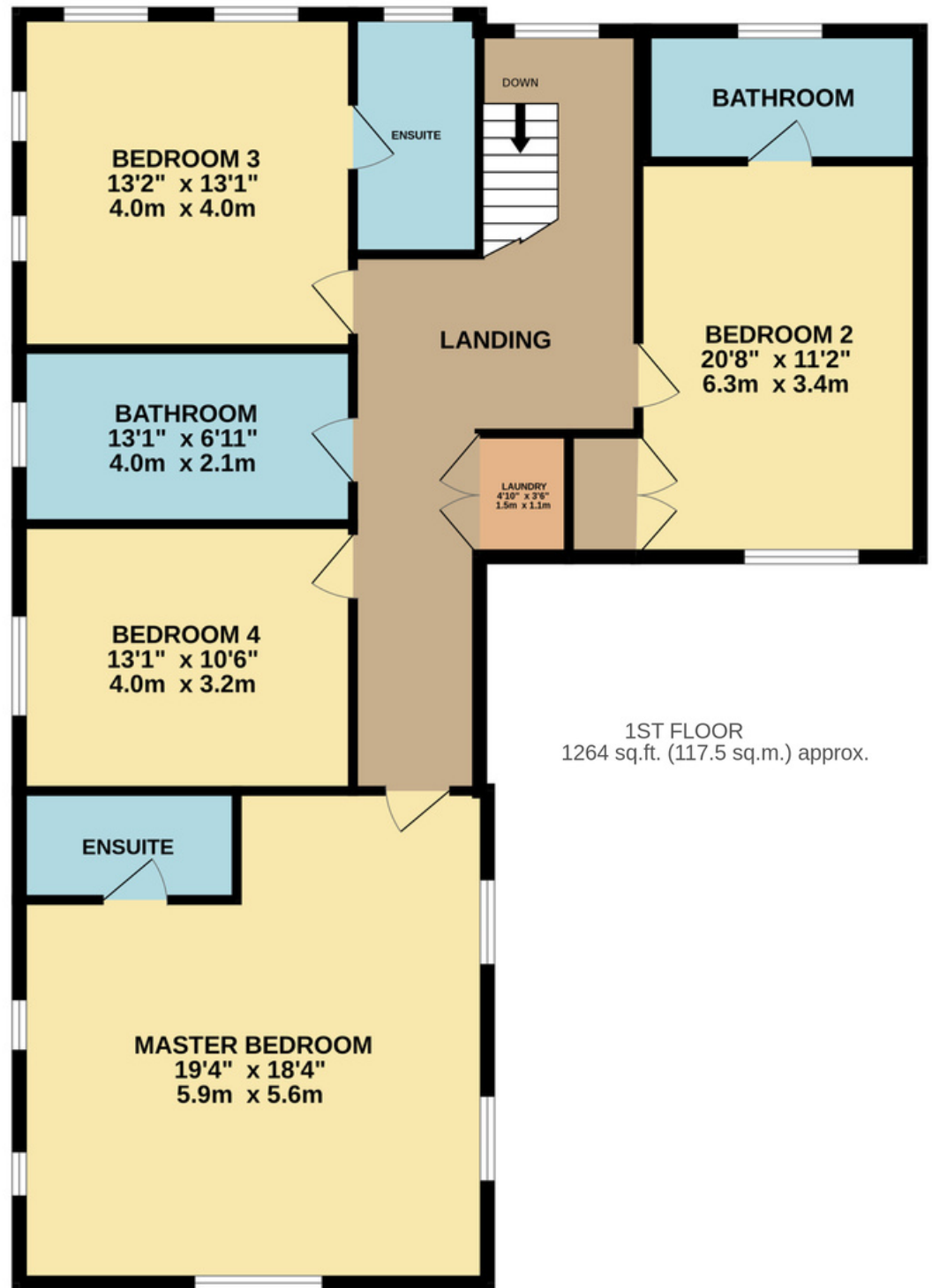
Journeying upstairs, the first of four bedrooms presents itself with a marvellous en-suite bathroom, adorned with a privacy glass window which offer a discreet glimpse of the picturesque surroundings. Bedroom Two, nestled around a subtle corner, also boasts a stunning en-suite bathroom, complete with a floating hand wash basin, WC, and a generously sized walk-in shower. A show-stopping Family Bathroom adjacent to Bedroom Two is a symphony of luxury, showcasing a captivating free-standing doubled-ended bathtub as its centrepiece. Sunlight gracefully filters through a skylight, illuminating the walk-in shower unit, WC, and hand wash basin with vanity unit, providing an oasis of relaxation and indulgence. The third bedroom, a spacious double, treats its occupants to breathtaking vistas of Ingleborough and charming Kirkby Market Town, creating an unparalleled sense of serenity. Tucked away at the far end of the hallway, the Master Bedroom beckons with a Juliet balcony, offering a seamless connection to the outdoors. The lavish en-suite bathroom provides a three-piece suite in pristine white, ensuring a private retreat of utmost opulence and comfort.







GROUND FLOOR
1291 sq.ft. (119.9 sq.m.) approx.



1ST FLOOR
1264 sq.ft. (117.5 sq.m.) approx.

The Essentials



Kirkby Lonsdale
Brewery
0.1 miles



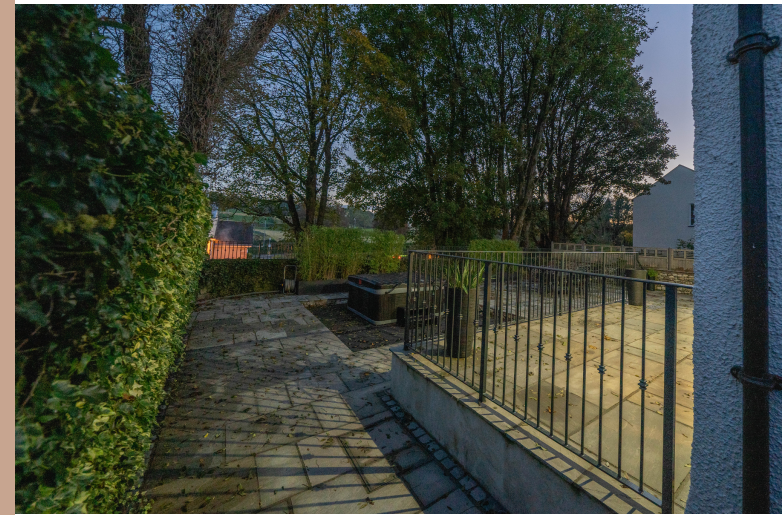
Booths
0.1 miles



The Royal
0.3 miles



Boots
Pharmacy
0.2 miles





lunevalley

ESTATES.



Scan to visit our website!

Suite 8, Willow Mill, Caton, LA2 9RA
01524 256625
team@lunevalleyestates.com
lunevalleyestates.com