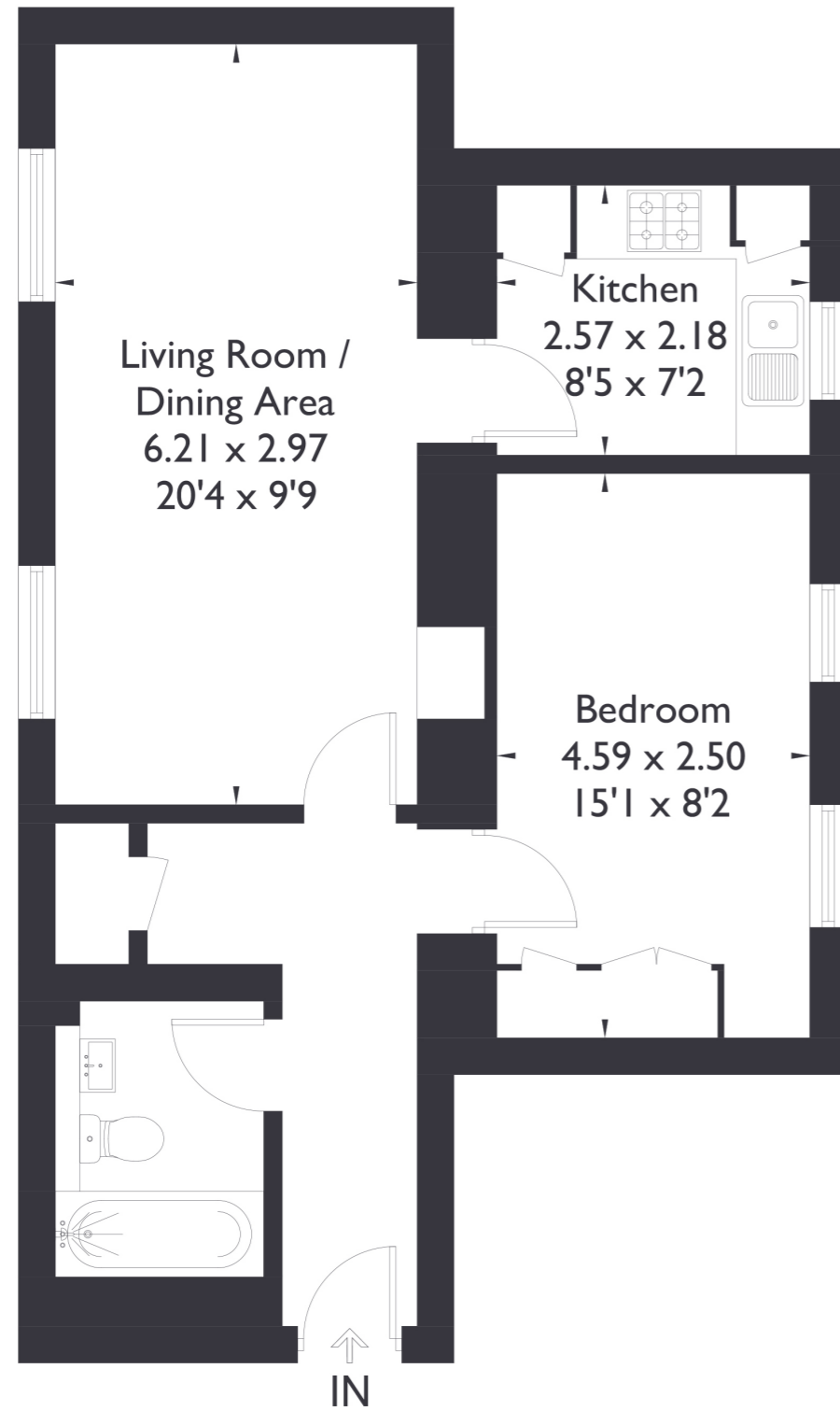


Flat 29, Clerkenwell House, UB2

Approximate Floor Area = 53.1 sq m / 571 sq ft



First Floor



1 BEDROOM FLAT

Hilda Road, UB2

£320,000

Welcome to your ideal urban retreat! This meticulously crafted one bedroom, one bathroom property is tucked away in a prime location, presenting an impeccable fusion of style and comfort.

FEATURES

- Leasehold
- One Bedroom
- One Bathroom
- Separate Kitchen & Dining
- Landscaped Communal Gardens
- Secure Gated Development
- Hanwell Station (Elizabeth Line)
- EPC Rating C



1 BEDROOM FLAT

Hilda Road, UB2

£320,000

Clerkenwell House is a remarkable component of the prestigious St. Bernard's development. It's a splendid example of the extensive conversion of Grade II listed period buildings into luxurious contemporary apartments with bespoke allure and distinctive character.

Step into a gorgeously presented interior that exudes a sense of warmth and sophistication. The well designed kitchen, boasting ample space, invites culinary creativity and convenience. The generously sized bedroom is a haven of tranquility, providing both comfort and practicality with abundant storage space for your belongings. Unique windows grace the property, allowing natural light to effortlessly illuminate the living spaces, creating an inviting and airy atmosphere.

EPC Rating C.

