



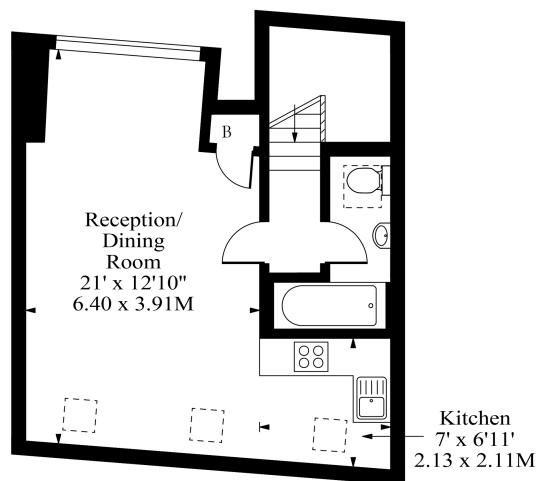
## 33 Pandora Road, London, NW6 1TS

£1,700 pcm

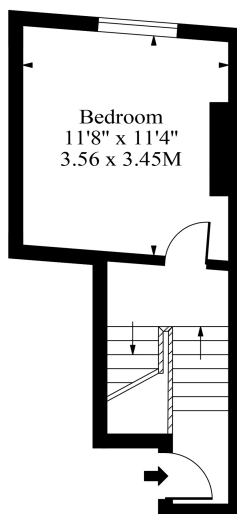
- One Bedroom
- Open Plan Kitchen / Living Room
- Part Furnished
- Split Level
- One Bathroom
- Available 21st August 2023
- Bright & Spacious



**Pandora Road NW6**



Second Floor



First Floor

Approx Gross Internal Area      564 Sq Ft - 52.40 Sq M

Measured in accordance with RICS guidelines. Every attempt is made to ensure accuracy

However all measurements are approximate.

The floor plan is illustrative purposes only and is not to scale

[www.tomekphotography.co.uk](http://www.tomekphotography.co.uk)

